



FITTING INSTRUCTIONS FOR AB0035 UPPER ADVENTURE BARS
HONDA AFRICA TWIN ADVENTURE SPORTS 2018-



THIS KIT CONTAINS THE ITEMS PICTURED AND LABELLED BELOW.
DO NOT PROCEED UNTIL YOU ARE SURE ALL PARTS ARE PRESENT.

Please note that the way the kit is packed does not necessarily represent the way of mounting to the bike

Please note that in cases where kits are packed with rubber washers holding the components onto the bolt – *the rubber washers should be thrown away!*

THE PARTS SHOWN MAY BE REPRESENTATIVE ONLY (FOR CLARITY OF INSTRUCTIONS ONLY)

Digital copies of these instructions are available to download from www.rg-racing.com

GENERAL TORQUE SETTINGS

M4 BOLT = 8Nm
M5 BOLT = 12Nm
M6 BOLT = 15Nm
M8 BOLT = 20Nm
M10 BOLT = 40Nm

TOOLS REQUIRED

- Socket set to include 10, 12, 13, 14 and 17mm sockets and wrench and/or spanners.
 - Set of Allen keys to include 4, 5 and 6mm A/F.
 - Torque wrench (up to 40Nm).

R&G Racing

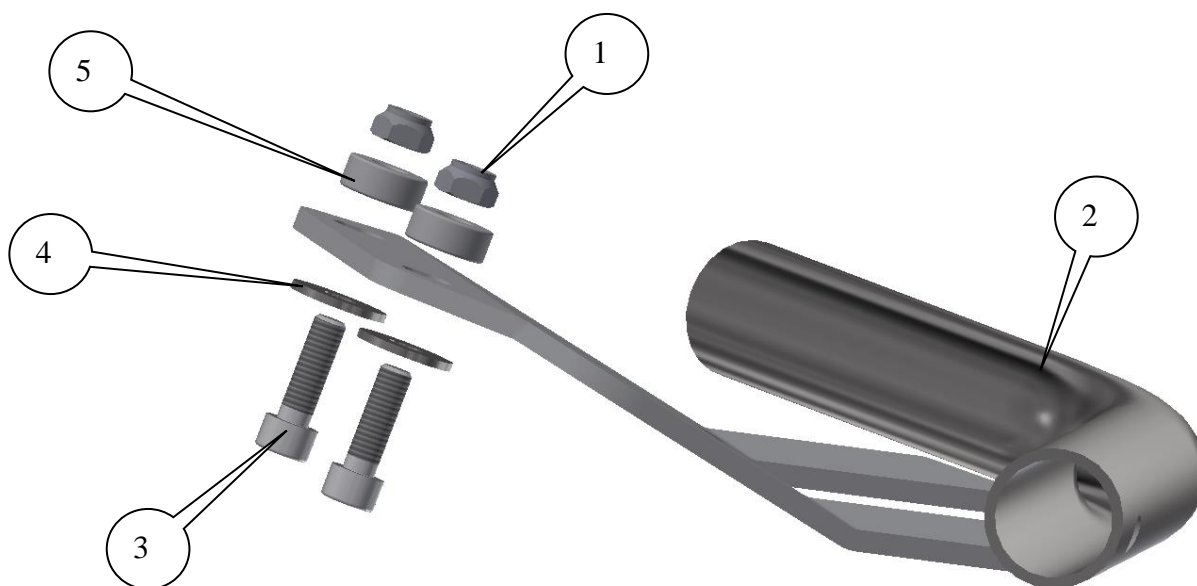
Unit 1 Shelleys Lane, East Worldham, Alton, Hants GU34 3AQ

Tel: +44 (0)1420 89007 Fax: +44 (0)1420 87301 www.rg-racing.com Email: info@rg-racing.com



In This Kit, There Should Be

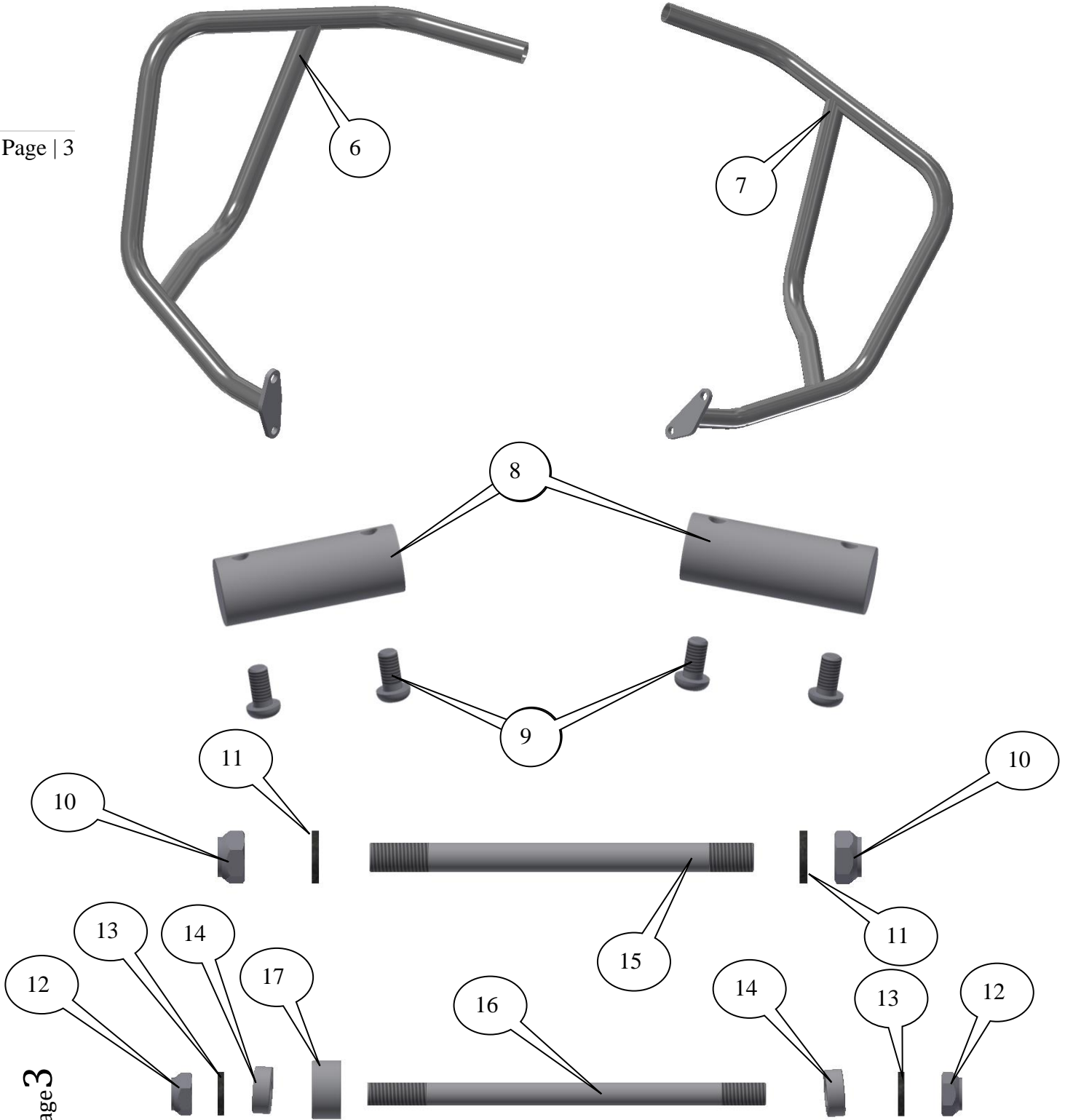
- 1x Left Hand Side Adventure Bar (CB051).
- 1x Right Hand Side Adventure Bar (CB052).
 - 1x Link Bracket (AB0035 MOUNT).
 - 2x Tube Connecting Blocks (M0445).
- 1x M10 Spindle Bar 130mm Long (SB0122).
- 1x M8 Spindle Bar 135mm Long (SB0123).
 - 2x M10 Nyloc Nuts.
 - 2x M10 Washers.
 - 2x M8 Nyloc Nuts.
 - 2x M8 Washers.
 - 2x M6 Nyloc Nuts.
 - 2x M6 Washers.
- 4x M6x12mm long Button head bolts.
 - 2x M6x20mm long Cap head bolts.
- 2x Spacers 6mm Long x 6.5mm I/Dia (S0454).
- 2x Spacers 6mm Long x 8mm I/Dia (S0299).
- 1x Spacer 10mm Long x 8.5mm I/Dia (S0995).



R&G Racing

Unit 1 Shelleys Lane, East Worldham, Alton, Hants GU34 3AQ

Tel: +44 (0)1420 89007 Fax: +44 (0)1420 87301 www.rg-racing.com Email: info@rg-racing.com



R&G Racing

Unit 1 Shelleys Lane, East Worldham, Alton, Hants GU34 3AQ

Tel: +44 (0)1420 89007 Fax: +44 (0)1420 87301 www.rg-racing.com Email: info@rg-racing.com



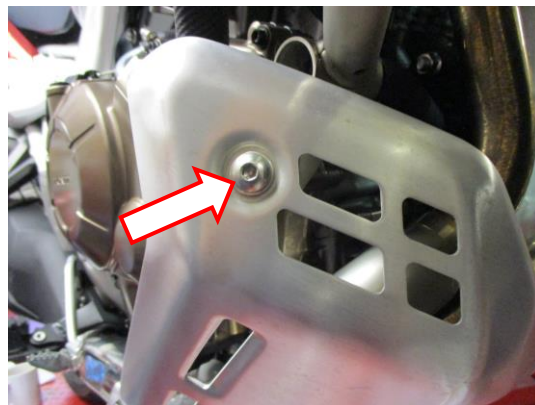
LEGEND

- ITEM 1 = M6 NYLOC NUTS (x2) (only to be used on pre-2018 models).
 ITEM 2 = AB0035 MOUNT LINK BRACKET WELDED ASSEMBLY (x1).
 ITEM 3 = M6 x 20mm LONG CAP HEAD BOLTS (x2).
 ITEM 4 = M6 WASHERS (x2).
 ITEM 5 = SPACERS (S0454=6mm LONG) (x2).
 ITEM 6 = ADVENTURE BAR LEFT-HAND SIDE (CB051=WELDED ASSEMBLY) (x1).
 ITEM 7 = ADVENTURE BAR RIGHT-HAND SIDE (CB052=WELDED ASSEMBLY) (x1).
 ITEM 8 = TUBE CONNECTING BLOCKS (M0455) (x2).
 ITEM 9 = M6 x 12mm LONG BUTTON HEAD BOLTS (x4).
 ITEM 10 = M10 NYLOC NUTS (x2).
 ITEM 11 = M10 WASHERS (x2).
 ITEM 12 = M8 NYLOC NUTS (x2).
 ITEM 13 = M8 WASHERS (x2).
 ITEM 14 = SPACERS (S0299=6mm LONG) (x2).
 ITEM 15 = M10 SPINDLE BAR (SB122=130mm LONG) (x1).
 ITEM 16 = M8 SPINDLE BAR (SB123=135mm LONG) (x1).
 ITEM 17 = SPACER (S0995=10mm LONG) (x2).

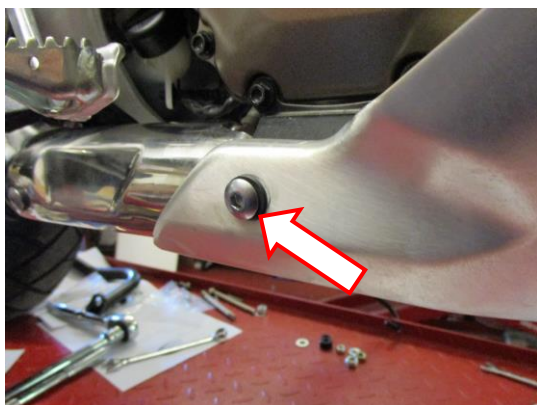
Page | 4



PICTURE 1



PICTURE 2



PICTURE 3



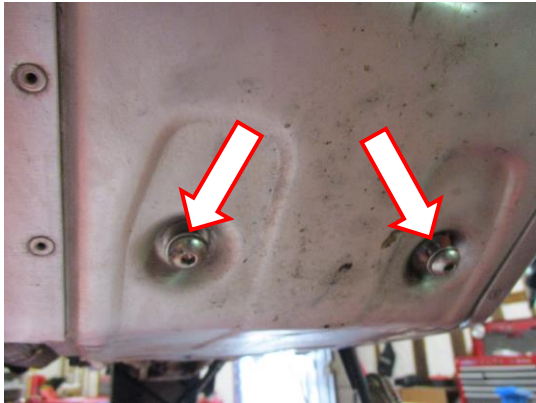
PICTURE 4

Page 4

R&G Racing

Unit 1 Shelleys Lane, East Worldham, Alton, Hants GU34 3AQ

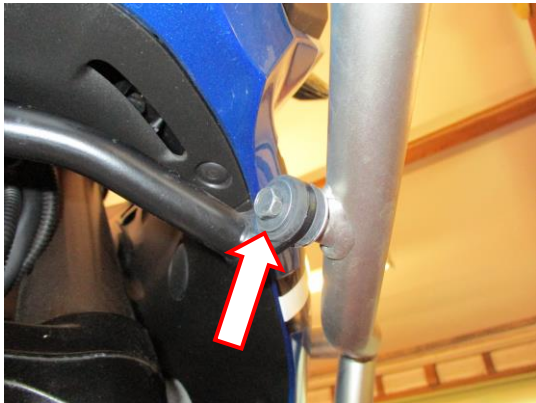
Tel: +44 (0)1420 89007 Fax: +44 (0)1420 87301 www.rg-racing.com Email: info@rg-racing.com



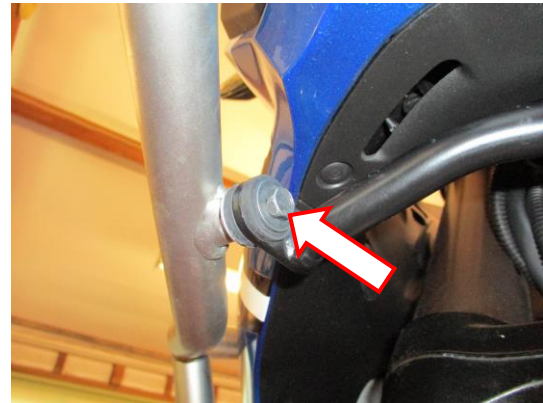
PICTURE 5



PICTURE 6



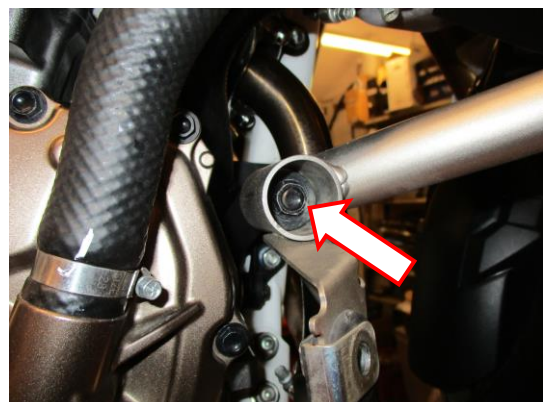
PICTURE 7



PICTURE 8



PICTURE 9

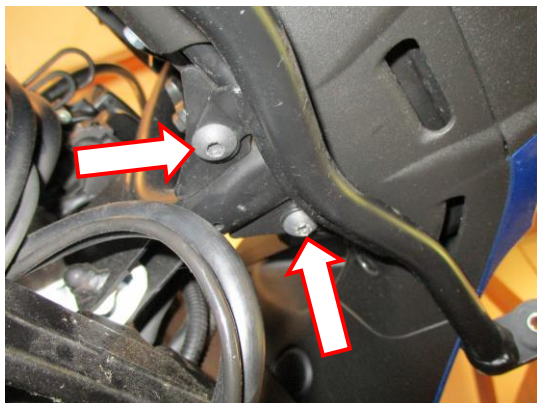


PICTURE 10

R&G Racing

Unit 1 Shelleys Lane, East Worldham, Alton, Hants GU34 3AQ

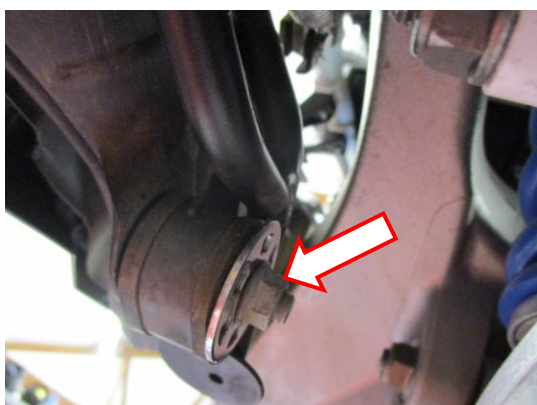
Tel: +44 (0)1420 89007 Fax: +44 (0)1420 87301 www.rg-racing.com Email: info@rg-racing.com



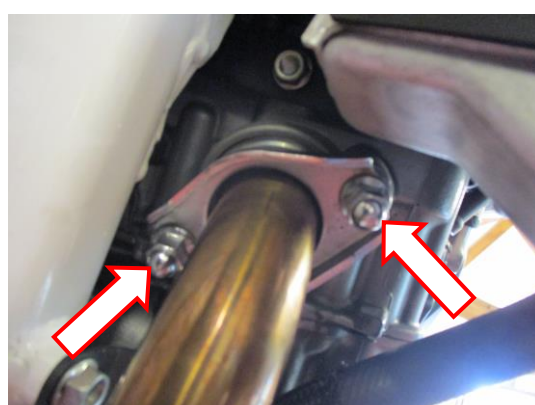
PICTURE 11



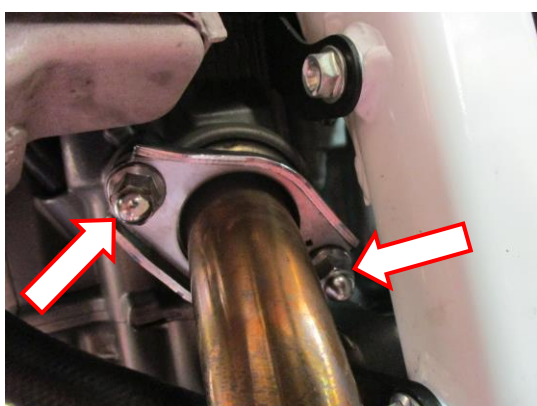
PICTURE 12



PICTURE 13



PICTURE 14

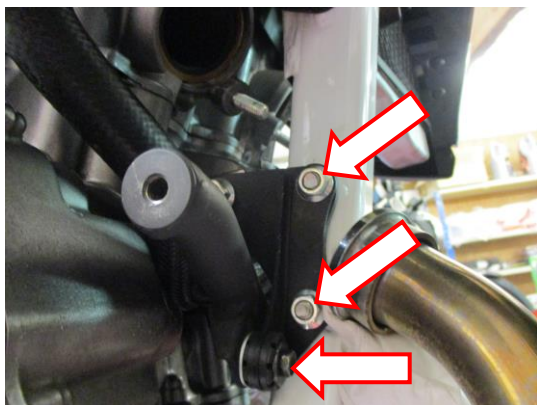


PICTURE 15

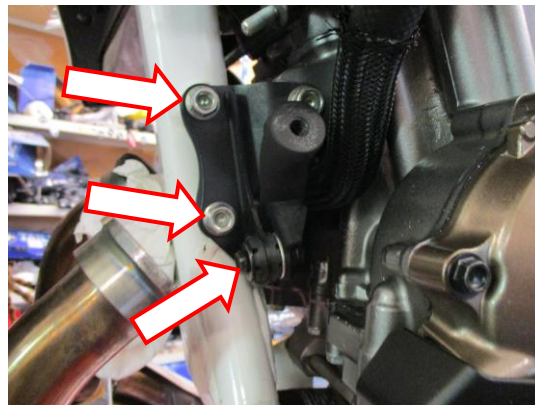


PICTURE 16

R&G Racing



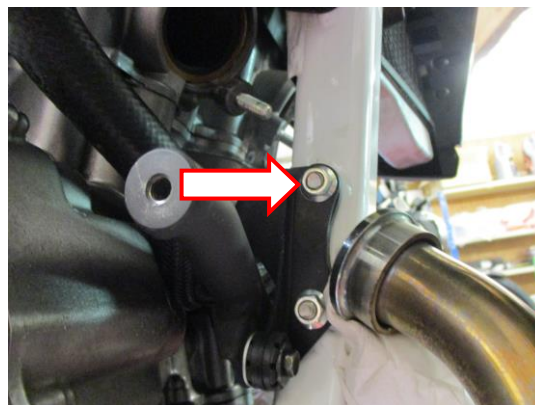
PICTURE 17



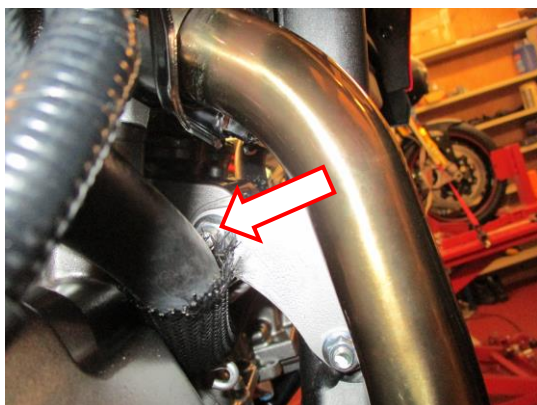
PICTURE 18



PICTURE 19



PICTURE 20

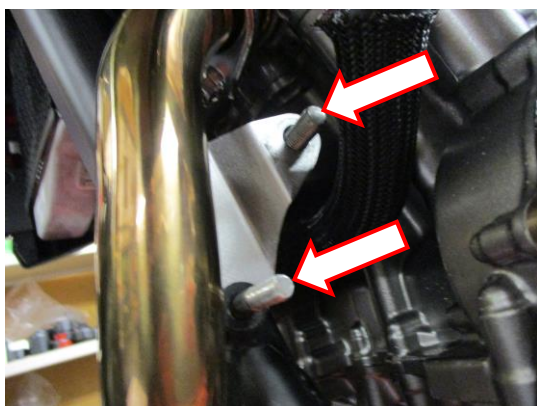


PICTURE 21



PICTURE 22

R&G Racing



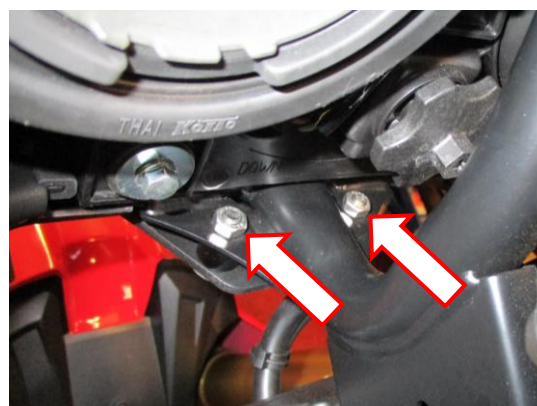
PICTURE 23



PICTURE 24



PICTURE 25



PICTURE 26

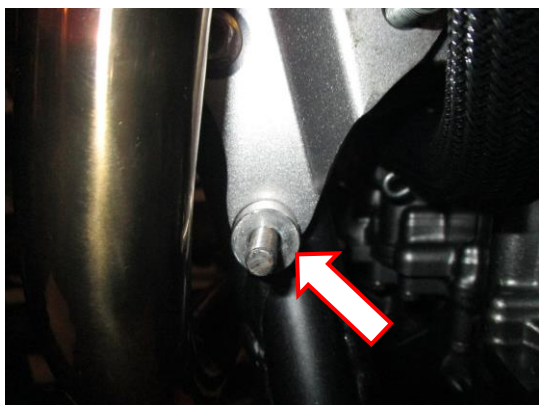


PICTURE 27



PICTURE 28

R&G Racing



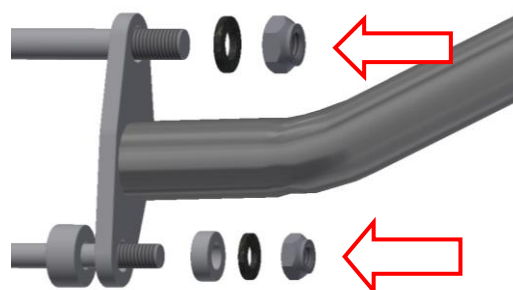
PICTURE 29



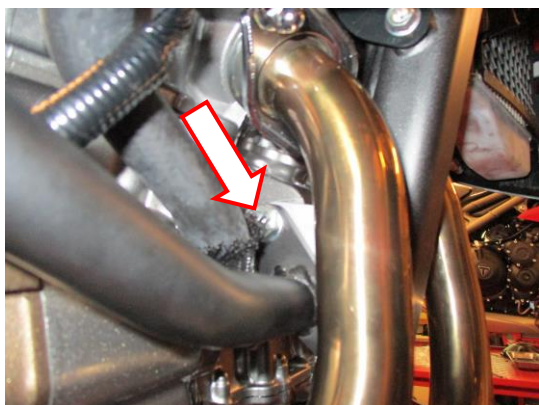
PICTURE 30



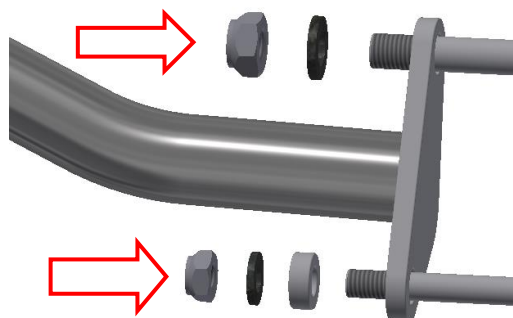
PICTURE 31



PICTURE 32



PICTURE 33



PICTURE 34

R&G Racing

Unit 1 Shelleys Lane, East Worldham, Alton, Hants GU34 3AQ

Tel: +44 (0)1420 89007 Fax: +44 (0)1420 87301 www.rg-racing.com Email: info@rg-racing.com



PICTURE 35



PICTURE 36

FITTING INSTRUCTIONS

Removal of original sump-guard/bash plate

- Remove the four bolts arrowed in pictures 1, 2, 3 and 4.
- Remove the two bolts arrowed in picture 5 while supporting the bash plate.
- Gently lower the bash plate and remove from the location peg as shown in picture 6 and remove the bash plate

Removal of original dresser bars

- Remove the four bolts arrowed in pictures 7, 8, 9 and 10 then carefully remove the dresser bar ensuring it does not contact any panels or fairings.
- Remove the two bolts arrowed in picture 11 and remove the upper dresser bar mounting bar.
- Remove the cable clip and unplug the plug socket arrowed in picture 12.
- Remove the nut and bolt arrowed in picture 13.
- Remove the four exhaust clamp nuts arrowed in pictures 14 and 15 (please support the exhaust to prevent damage)
- While supporting the exhaust remove the bolt arrowed in picture 16 and carefully lower/remove the exhaust.
- Remove the two nuts and bolt arrowed in picture 17 and remove the lower dresser bar mounting bracket.
- Remove the lower bolt arrowed in picture 18 and remove the lower dresser bar mounting bar.
- Remove the other two bolts arrowed in picture 18 and remove the lower dresser mounting bracket.
- Replace and tighten the upper bolt and nut as original as arrowed in pictures 19 and 20.
- The exhaust can now be fitted as original or after the adventure bars are fully fitted.

Off side (right side as you sit on bike)

- Remove the nut arrowed in picture 21.

Near side (left side as you sit on bike)

R&G Racing

Unit 1 Shelleys Lane, East Worldham, Alton, Hants GU34 3AQ

Tel: +44 (0)1420 89007 Fax: +44 (0)1420 87301 www.rg-racing.com Email: info@rg-racing.com



- Remove the original upper bolt arrowed in picture 22 (please be aware of the spacer between the bracket and frame which may fall out, this must be refitted as original when fitting the spindle bar) and replace with the larger spindle bar (item 15) and fit the smaller spindle bar (item 16) into the lower hole leaving equal amounts protruding from either side as shown in picture 23.
- Take the two M6 cap head bolts with washers (items 3 and 4) through the slots in the AB0035 mount link bracket (item 2) and place the two spacers (item 5=6mm long) onto the exposed end of the bolt as shown in picture 24.
- Offer this assembly into position as shown in picture 25 and locate into the threads (do not tighten at this stage). On pre-2018 models you will have to use the two M6 Nyloc nuts (items 1) as shown in picture 26 (please fully engage the nuts but do not fully tighten at this stage).
- Place one of the tube connecting blocks (item 8) into the open end of the AB0035 mount link bracket and locate in position using one of the smaller M6 bolts (item 9) as shown in picture 27 (do not fully tighten at this stage).
- Place the spacer (item 17=10mm long) over the exposed end of the lower spindle bar as shown in pictures 28 and 29.
- Offer the left-hand side adventure bar (item 6) into position as shown in picture 30, place one of the M10 washers (item 11) and one of the M10 Nyloc nuts (item 10) onto the upper spindle bar (do not tighten at this stage) as shown in pictures 30 and 32.
- Locate the upper end of the adventure bar into the exposed end of the tube connecting block and secure using one of the smaller M6 button head bolts (item 9) as shown in picture 31.
- If not using AB0021 (lower adventure bars) place one of the thinnest spacers (item 14=6mm wide) followed by one of the M8 washers (item 13) and one of the m8 Nyloc nuts (item 12) onto the lower spindle bar as shown in picture 32 (do not tighten at this stage).

Off side (right side as you sit on bike)

- Place the remaining tube connecting block (item 8) into the open end of the AB0035 mount link bracket and locate in position using one of the smaller M6 bolts (item 9) as shown in picture 35 (do not fully tighten at this stage).
- Offer the right-hand side adventure bar (item 7) into position as shown in picture 33, place one of the M10 washers (item 11) and one of the M10 Nyloc nuts (item 10) onto the upper spindle bar (do not tighten at this stage) as shown in pictures 33 and 34.
- Locate the upper end of the adventure bar into the exposed end of the tube connecting block and secure using one of the smaller M6 button head bolts (item 9) as shown in picture 36.
- If not using AB0021 (lower adventure bars) place one of the thinnest spacers (item 14=6mm wide) followed by one of the M8 washers (item 13) and one of the M8 Nyloc nuts (item 12) onto the lower spindle bar as shown in picture 44 (do not tighten at this stage).
- Finally tighten all nuts and bolts ensuring no parts of the adventure bars contacts or can cause damage to any of the motorcycle parts.
- If not already fitted, refit the exhaust as original.
- Please note if refitting the original bash plate, it will not have the two of the supports points as shown in pictures 1 and 2. If not refitting the bash plate it is possible to fit the lower adventure bars (product code AB0021).



CONSUMER NOTICE

The catalogue description and any exhibition of samples are only broad indications of the Products and R&G may make design changes which do not diminish their performance or visual appeal and supplying them in such state shall conform to the order. The Buyer acknowledges no representation or warranty (other than as to title) has been given or will apply to the Products other than those in R&G's order or confirmation and the Buyer confirms it has chosen the Products as being of merchantable quality and suitable for its particular purposes. Where R&G fits the Products or undertakes other services it shall exercise reasonable skill and care and rectify any fault free of charge unless the workmanship has been disturbed. The Buyer is responsible for ensuring that the warranty on the motorcycle is not affected by the fitting of the Products. On return of any defective Products R&G shall at its option either supply a replacement or refund the purchase money but shall not be liable if the Products have been modified or used or maintained otherwise than in accordance with R&G's or manufacturer's instructions and good engineering practice or if the defect arises from accident or neglect. Other than identified above and subject to R&G not limiting its liability for causing death and personal injury, it shall not be liable for indirect or consequential loss and otherwise its liability shall be limited to the amounts paid by the Buyer for the Products or the fitting or service concerned. These terms do not affect the Buyer's statutory rights.

R&G RACING RETURNS POLICY (NON-FAULTY GOODS)

Returns must be pre-authorised (if not pre-authorised the return will be rejected). Goods may only be returned direct to us if they were purchased direct from us (customer must prove if necessary). Otherwise to be returned to original vendor. Goods must be in re-sellable condition, in the opinion of R&G Racing. All returns are subject to a 25% restocking and handling fee (25% of the gross value exc. P&P – at the prevailing price at time of purchase). The customer must pay any and all carriage charges. No returns of discontinued products, unless within 14 days of purchase. This policy does not affect your statutory rights and does not refer to faulty goods.

R&G Racing

Unit 1 Shelleys Lane, East Worldham, Alton, Hants GU34 3AQ

Tel: +44 (0)1420 89007 Fax: +44 (0)1420 87301 www.rg-racing.com Email: info@rg-racing.com



**NOTICE DE MONTAGE POUR AB0035 BARRES AVENTURE SUPÉRIEURES
HONDA AFRICA TWIN ADVENTURE SPORTS 2018-**



Le kit contient les articles exposés ci-dessous, vérifier que toutes les pièces soient présentes avant de procéder au montage.

La façon dont le kit est emballé ne correspond pas forcément à la façon de monter les pièces sur la moto

Notez que si les kits sont emballés avec des rondelles en caoutchouc servant à tenir les composants, *ces rondelles doivent être jetées !*

THE PARTS SHOWN MAY BE REPRESENTATIVE ONLY (FOR CLARITY OF INSTRUCTIONS ONLY)

Notice disponible au téléchargement sur www.rg-racing.com

VALEURS DE SERRAGE RECOMMANDÉES :

M4 BOULON = 8Nm
M5 BOULON = 12Nm
M6 BOULON = 15Nm
M8 BOULON = 20Nm
M10 BOULON = 40Nm

R&G Racing

Unit 1 Shelleys Lane, East Worldham, Alton, Hants GU34 3AQ

Tel: +44 (0)1420 89007 Fax: +44 (0)1420 87301 www.rg-racing.com Email: info@rg-racing.com

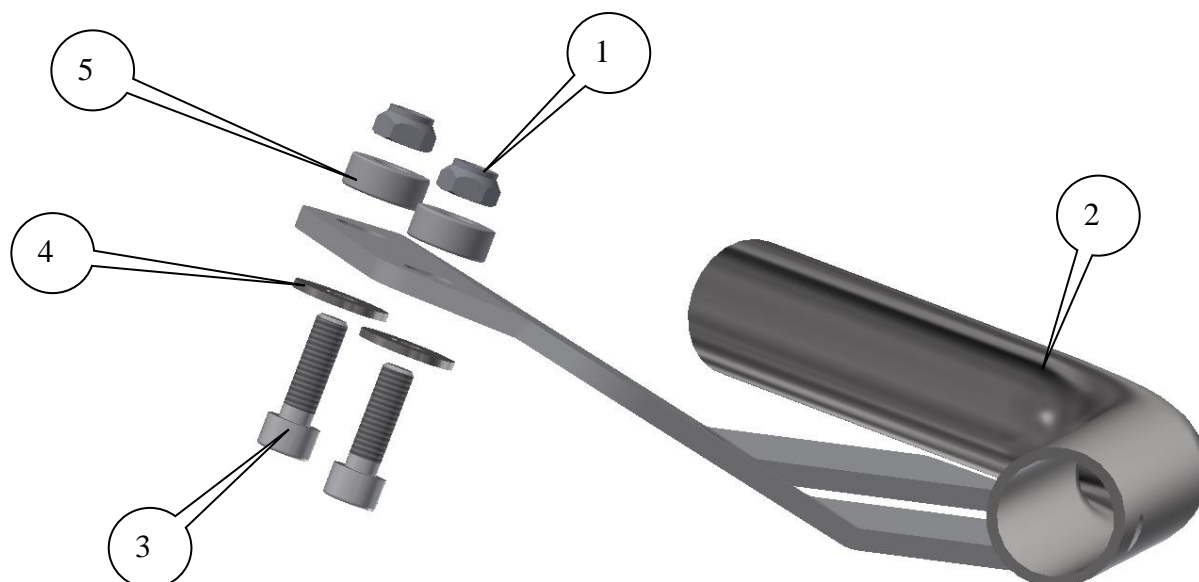


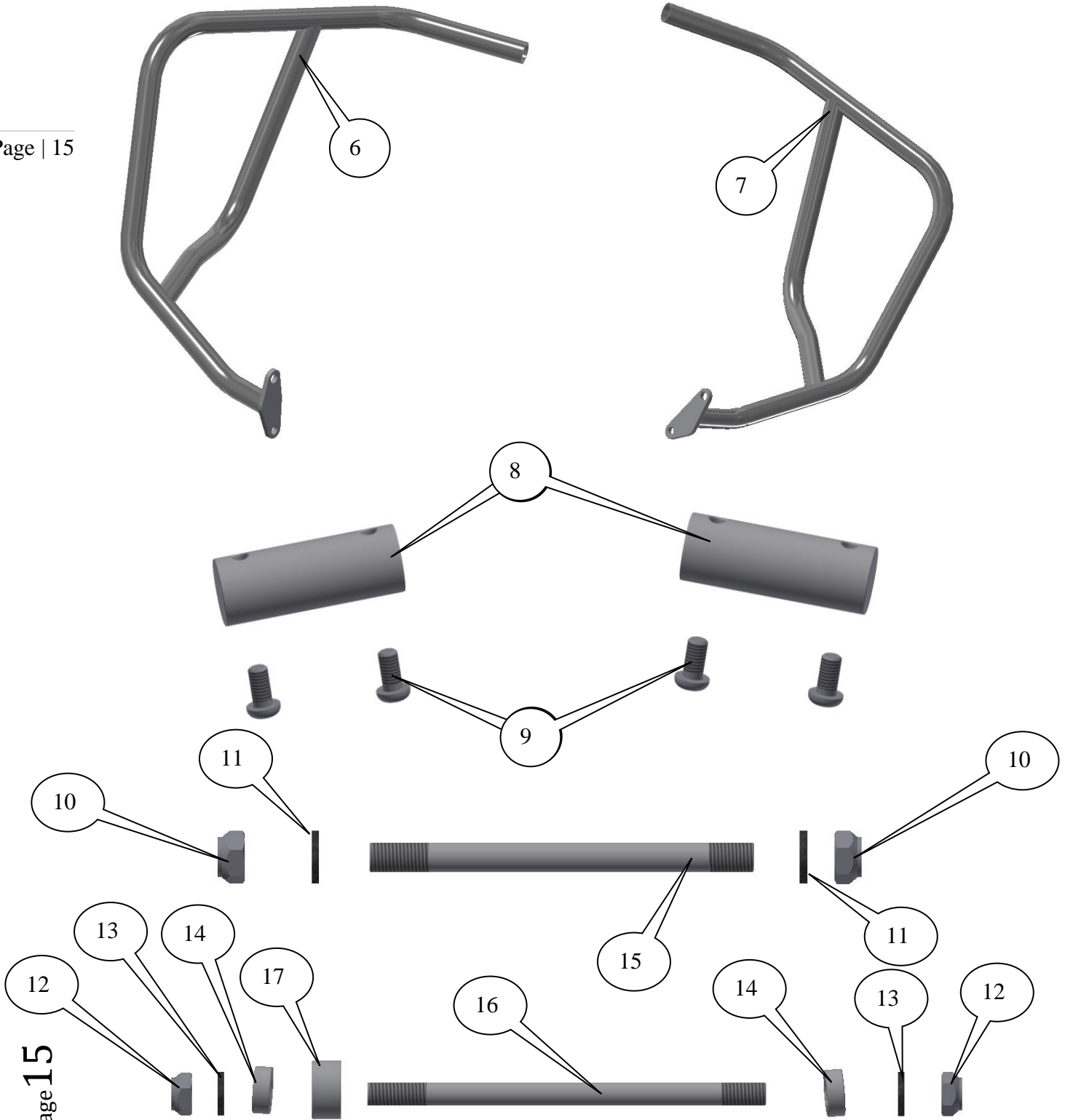
OUTILS REQUIS

- Jeu de clés et douilles 10, 12, 13, 14 et 17mm.
 - Clés Allen 4, 5 et 6mm.
 - Clé dynamométrique (à 40Nm).

Le kit doit contenir :

- 1x Barre Aventure côté gauche (CB051).
- 1x Barre Aventure côté droit (CB052).
- 1x Support de liaison (AB0035 SUPPORT).
- 2x Blocs tubulaires de connexion (M0445).
- 1x M10 Axe de moyeu 130mm de long (SB0122).
- 1x M8 Axe de moyeu 135mm de long (SB0123).
 - 2x M10 Écrous.
 - 2x M10 Rondelles.
 - 2x M8 Écrous.
 - 2x M8 Rondelles.
 - 2x M6 Écrous.
 - 2x M6 Rondelles.
 - 4x M6x12mm Boulons.
 - 2x M6x20mm Boulons.
- 2x Entretoises 6mm de long x 6.5mm I/Dia (S0454).
- 2x Entretoises 6mm de long x 8mm I/Dia (S0299).
- 1x Entretoise 10mm de long x 8.5mm I/Dia (S0995).







LÉGENDE

- ARTICLE 1 = M6 ÉCROUS (x2) (modèles avant 2018).
 ARTICLE 2 = AB0035 ASSEMBLAGE SOUDÉ DE SUPPORT DE LIAISON (x1).
 ARTICLE 3 = M6 x 20mm BOULONS (x2).
 ARTICLE 4 = M6 RONDELLES (x2).
 ARTICLE 5 = ENTRETOISES (S0454=6mm LONG) (x2).
 ARTICLE 6 = BARRE AVENTURE CÔTÉ GAUCHE (CB051=ASSEMBLAGE SOUDÉ) (x1).
 ARTICLE 7 = BARRE AVENTURE CÔTÉ DROIT (CB052= ASSEMBLAGE SOUDÉ) (x1).
 ARTICLE 8 = BLOCS TUBULAIRES DE CONNEXION (M0455) (x2).
 ARTICLE 9 = M6 x 12mm BOULONS (x4).
 ARTICLE 10 = M10 ÉCROUS (x2).
 ARTICLE 11 = M10 RONDELLES (x2).
 ARTICLE 12 = M8 ÉCROUS (x2).
 ARTICLE 13 = M8 RONDELLES (x2).
 ARTICLE 14 = ENTRETOISES (S0299=6mm DE LONG) (x2).
 ARTICLE 15 = M10 AXE MOYEU (SB122=130mm DE LONG) (x1).
 ARTICLE 16 = M8 AXE MOYEU (SB123=135mm DE LONG) (x1).
 ARTICLE 17 = ENTRETOISE (S0995=10mm DE LONG) (x2).

NOTICE DE MONTAGE

Démontage du garde-boue / sabot

- Enlever les 4 boulons indiqués sur les photos 1, 2, 3 et 4.
- Enlever les 2 boulons indiqués sur la photo 5 tout en supportant le sabot.
- Baisser le sabot puis enlevez le de son emplacement, voir photo 6 puis enlever le sabot.

Démontage de l'axe de commode d'origine

- Enlever les 4 boulons, voir photos 7, 8, 9 et 10 puis enlever l'axe en veillant à ce qu'il ne touche pas les carénages.
- Enlever les 2 boulons, voir photo 11 puis enlever l'axe supérieur de fixation de la commode.
- Enlever le clip câble puis débrancher la prise, voir photo 12.
- Enlever l'écrou et le boulon, voir photo 13.
- Enlever les 4 écrous d'échappement, voir photos 14 et 15 (Supportez l'échappement pour éviter tout dommage).
- Tout en supportant l'échappement, enlever le boulon indiqué sur la photo 16 puis baisser l'échappement.
- Enlever les 2 écrous et le boulon indiqués sur la photo 17 puis enlever le support de fixation de l'axe de commode.
- Enlever le boulon inférieur, voir photo 18 puis enlever l'axe de fixation de l'axe de commode inférieur.
- Enlever les 2 autres boulons, voir photo 18 puis enlever le support de fixation de commode inférieur.
- Remonter puis serrer le boulon, voir photos 19 et 20.
- L'échappement peut maintenant être monté comme à l'origine ou après que les barres Aventure soient correctement en position.



Côté droit (lorsqu'on est assis sur la moto)

- Enlever l'écrou, voir photo 21.

Côté gauche (lorsqu'on est assis sur la moto)

- Enlever le boulon supérieur d'origine, voir photo 22 (attention à l'entretoise entre le support et le cadre, elle pourrait tomber. Elle doit être remontée comme à l'origine lors du montage de l'axe de moyeu) puis remonter avec l'axe moyeu plus large (article 15) puis monter l'axe moyeu plus petit (article 16) dans le trou inférieur en laissant des longueurs équivalentes dépasser de chaque côté, voir photo 23.
- Prendre les 2 boulons M6 avec rondelles (articles 3 et 4) dans les fentes dans le support de liaison AB0035 (article 2) puis insérer les 2 entretoises (article 5=6mm de long) sur l'extrémité du boulon, voir photo 24.
- Monter l'ensemble en position, voir photo 25 puis placez les dans les filetages (ne pas serrer pour le moment). Sur les modèles d'avant 2018, vous devrez utiliser 2 écrous M6 (articles 1) voir photo 26. (Engager complètement les écrous mais ne pas serrer pour le moment).
- Placer un des blocs de connexion tubulaire (article 8) dans l'ouverture du support de liaison AB0035 puis placez le en position en utilisant un des petits boulons M6 (article 9) voir photo 27 (ne pas serrer complètement pour le moment).
- Place l'entretoise (article 17=10mm de long) sur l'extrémité de l'axe de moyeu inférieur, voir photos 28 and 29.
- Monter la barre Aventure du côté gauche (article 6) en position, voir photo 30, placer une des rondelles M10 (article 11) et un des écrous M10 (article 10) sur l'axe de moyeu supérieur (ne pas serrer complètement pour le moment) voir photos 30 et 32.
- Placer l'extrémité supérieure de la barre Aventure dans l'extrémité du bloc de connexion tubulaire puis fixer avec un des petits boulons M6 (article 9) voir photo 31.
- Si vous n'utilisez pas AB0021 (Barres Aventure inférieures) placer une des fines entretoises (article 14=6mm de large) suivie d'une rondelle M8 (article 13) et un écrou M8 (article 12) sur l'axe de moyeu inférieur, voir photo 32 (Ne pas serrer pour le moment).

Côté droit (lorsqu'on est assis sur la moto)

- Placer le bloc de connexion tubulaire restant (article 8) dans l'ouverture du support de liaison AB0035 puis placez le en position en utilisant un des petits boulons M6 (article 9) voir photo 35 (Ne pas serrer complètement pour le moment).
- Monter la Barre Aventure du côté droit (article 7) en position, voir photo 33, placer une des rondelles M10 (article 11) et un des écrous M10 (article 10) sur l'axe de moyeu supérieur (Ne pas serrer complètement pour le moment) voir photos 33 et 34.
- Placer l'extrémité supérieure de la Barre Aventure dans l'extrémité du bloc de connexion tubulaire puis fixer en utilisant un des petits boulons M6 (article 9), voir photo 36.
- Si vous n'utilisez pas AB0021 (Barres Aventure inférieures) placer une des fines entretoises (article 14=6mm de large) suivie d'une rondelle M8 (article 13) et un écrou M8 (article 12) sur l'axe de moyeu inférieur, voir photo 44 (ne pas serrer complètement pour le moment).
- Enfin, serrer tous les écrous et boulons en veillant à ce qu'aucune partie des Barres Aventure ne puisse toucher et potentiellement endommager une autre partie de la moto.
- Si cela n'est pas déjà fait, remonter l'échappement comme à l'origine.
- Notez que si vous remonter le sabot d'origine, il ne possèdera pas les 2 points de support, voir photos 1 et 2. Si vous ne remontez pas le sabot, il est possible de monter les Barres Aventure inférieures (code produit AB0021).



ISSUE 1 11/10/2018 (NSY)

Page | 18

CONSUMER NOTICE

The catalogue description and any exhibition of samples are only broad indications of the Products and R&G may make design changes which do not diminish their performance or visual appeal and supplying them in such state shall conform to the order. The Buyer acknowledges no representation or warranty (other than as to title) has been given or will apply to the Products other than those in R&G's order or confirmation and the Buyer confirms it has chosen the Products as being of merchantable quality and suitable for its particular purposes. Where R&G fits the Products or undertakes other services it shall exercise reasonable skill and care and rectify any fault free of charge unless the workmanship has been disturbed. The Buyer is responsible for ensuring that the warranty on the motorcycle is not affected by the fitting of the Products. On return of any defective Products R&G shall at its option either supply a replacement or refund the purchase money but shall not be liable if the Products have been modified or used or maintained otherwise than in accordance with R&G's or manufacturer's instructions and good engineering practice or if the defect arises from accident or neglect. Other than identified above and subject to R&G not limiting its liability for causing death and personal injury, it shall not be liable for indirect or consequential loss and otherwise its liability shall be limited to the amounts paid by the Buyer for the Products or the fitting or service concerned. These terms do not affect the Buyer's statutory rights.

R&G RACING RETURNS POLICY (NON-FAULTY GOODS)

Returns must be pre-authorised (if not pre-authorised the return will be rejected). Goods may only be returned direct to us if they were purchased direct from us (customer must prove if necessary). Otherwise to be returned to original vendor. Goods must be in re-sellable condition, in the opinion of R&G Racing. All returns are subject to a 25% restocking and handling fee (25% of the gross value exc. P&P – at the prevailing price at time of purchase). The customer must pay any and all carriage charges. No returns of discontinued products, unless within 14 days of purchase. This policy does not affect your statutory rights and does not refer to faulty goods.

R&G Racing

Unit 1 Shelleys Lane, East Worldham, Alton, Hants GU34 3AQ

Tel: +44 (0)1420 89007 Fax: +44 (0)1420 87301 www.rg-racing.com Email: info@rg-racing.com



MONTAGEANLEITUNG FÜR AB0035 OBERE ADVENTURE STURZBÜGEL
HONDA AFRICA TWIN ADVENTURE SPORTS 2018-



ALLE TEILE SIND UNTEN ABGEBILDET UND GEKENNZEICHNET. BEVOR SIE MIT DER MONTAGE BEGINNEN, ÜBERPRÜFEN SIE, DASS ALLE TEILE VORHANDEN SIND.

Hinweis: Die Verpackung der Teile stellt nicht die Reihenfolge der Montage dar.

Hinweis für Kits mit Plastikunterlegscheiben an den Schrauben – *Diese Plastikunterlegscheiben werden nicht für den Einbau benötigt!*

DIE UNTEN ABGEBILDETEN TEILE DIENEN LEDIGLICH ZUR ERKLÄRUNG

Eine digitale Version dieser Montageanleitung kann auf folgender Seite heruntergeladen werden: www.rg-racing.com

ALLGEMEINE ANZUGSDREHMOMENTE:

M4 SCHRAUBE = 8Nm
 M5 SCHRAUBE = 12Nm
 M6 SCHRAUBE = 15Nm
 M8 SCHRAUBE = 20Nm
 M10 SCHRAUBE = 40Nm

SIE BENÖTIGEN FOLGENDES WERZEUG

- Steckschlüsselsatz inkl. 10, 12, 13, 14 und 17mm Steckschlüssel und/oder Schraubenschlüssel
 - Satz Inbusschlüssel inkl. 4, 5 und 6mm A/F
 - Drehmomentschlüssel (bis 40Nm)

R&G Racing

Unit 1 Shelleys Lane, East Worldham, Alton, Hants GU34 3AQ

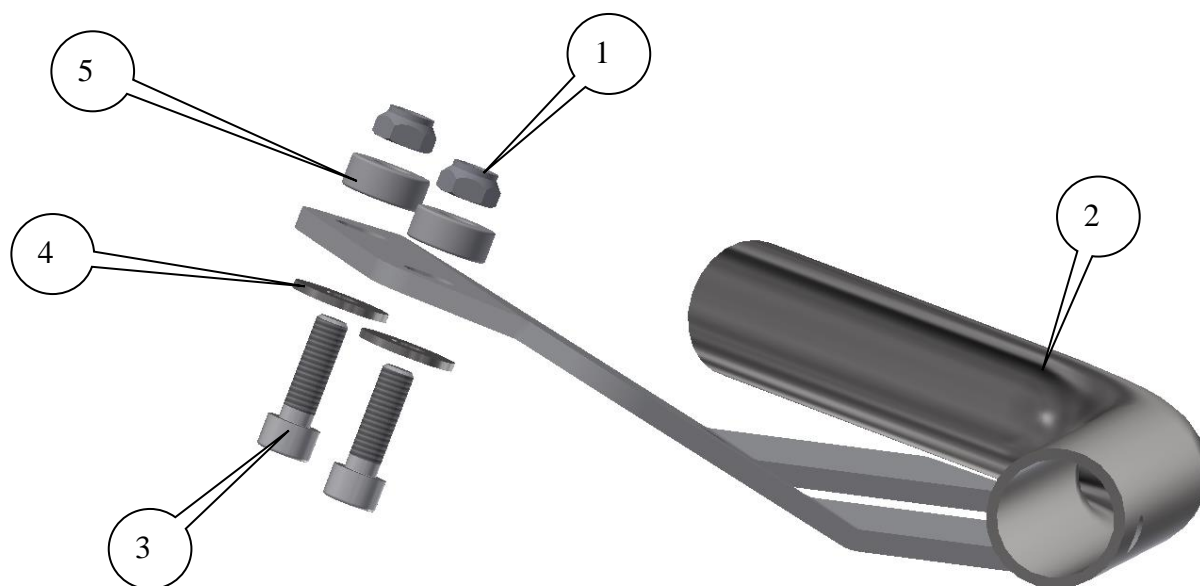
Tel: +44 (0)1420 89007 Fax: +44 (0)1420 87301 www.rg-racing.com Email: info@rg-racing.com

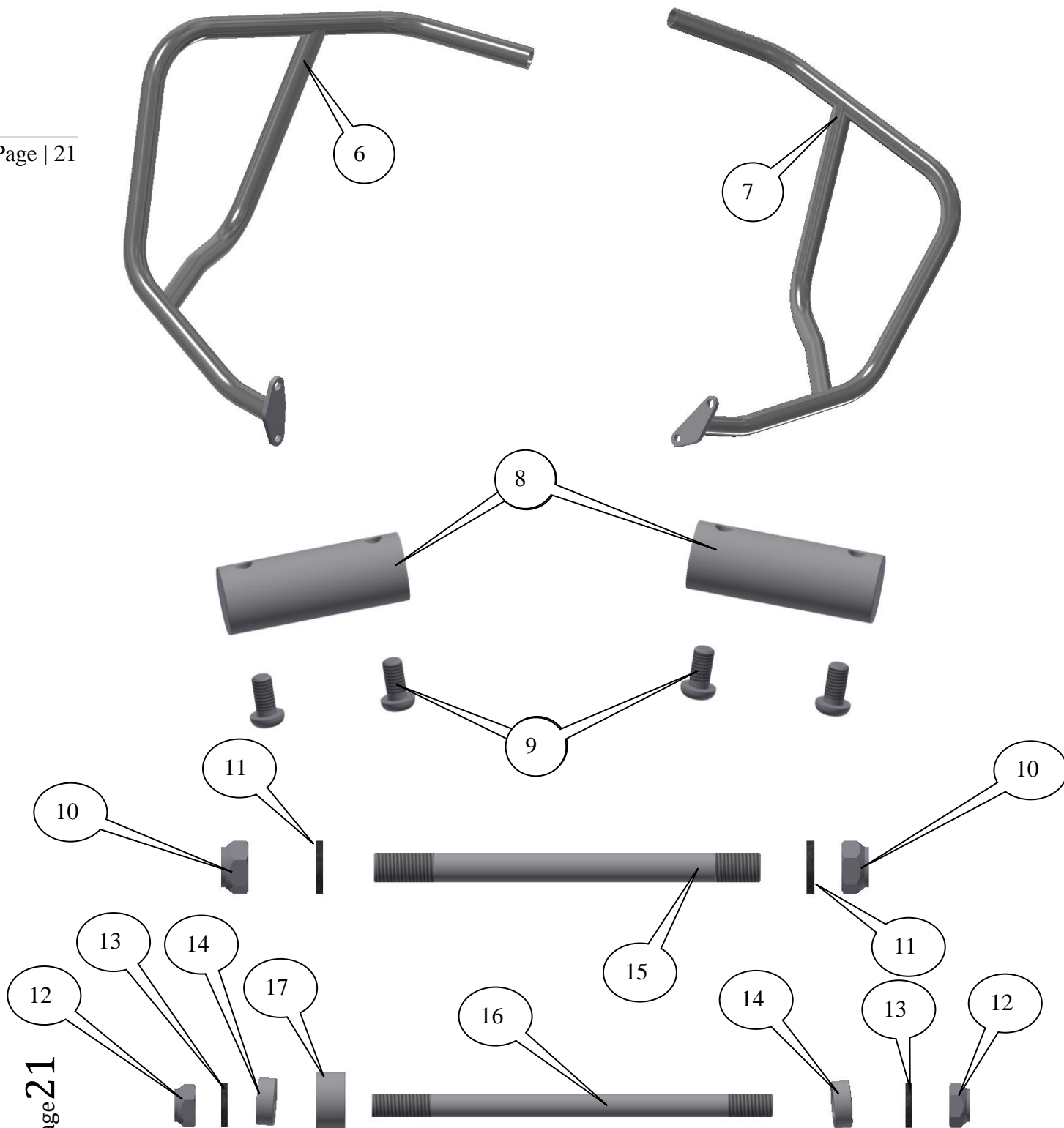


Inhalt des Kits:

- 1x Adventure Bar linke Seite(CB051)
- 1x Adventure Bar rechte Seite(CB052).
- 1x Verbindungshalteklammer (AB0035 MOUNT).
 - 2x Rohrverbinder (M0445).
- 1x M10 Verbindungsstange 130mm Länge (SB0122)
- 1x M8 Verbindungsstange 135mm Länge (SB0123)
 - 2x M10 selbstsichernde Mutter
 - 2x M10 Unterlegscheibe
 - 2x M8 selbstsichernde Mutter
 - 2x M8 Unterlegscheibe
 - 2x M6 selbstsichernde Mutter
 - 2x M6 Unterlegscheibe
 - 4x M6x12mm Inbusschraube
 - 2x M6x20mm Inbusschraube
- 2x Distanzhalter 6mm Länge x 6,5mm I/Dia (S0454)
- 2x Distanzhalter 6mm Länge x 8mm I/Dia (S0299)
- 1x Distanzhalter 10mm Länge x 8,5mm I/Dia (S0995)

Page | 20







LIEFERUMFANG

- ARTIKEL 1 = M6 SELBSTSICHERNDE MUTTER (x2) (Verwendung nur bei Modellen vor 2018)
ARTIKEL 2 = AB0035 VERBINDUNGSHALTEKLAMMER (x1)
ARTIKEL 3 = M6 x 20mm INBUSSCHRAUBE (x2)
ARTIKEL 4 = M6 UNTERLEGSSCHEIBE (x2).
ARTIKEL 5 = DISTANZHALTER (S0454=6mm LÄNGE) (x2)
ARTIKEL 6 = ADVENTURE BAR LINKE SEITE (CB051=) (x1)
ARTIKEL 7 = ADVENTURE BAR RECHTE SEITE (CB052=) (x1)
ARTIKEL 8 = VERBINDUNGSBLÖCKE (M0455) (x2)
ARTIKEL 9 = M6 x 12mm INBUSSCHRAUBE (x4)
ARTIKEL 10 = M10 SELBSTSICHERNDE MUTTER (x2)
ARTIKEL 11 = M10 UNTERLEGSSCHEIBE (x2)
ARTIKEL 12 = M8 SELBSTSICHERNDE MUTTER (x2)
ARTIKEL 13 = M8 UNTERLEGSSCHEIBE (x2)
ARTIKEL 14 = DISTANZHALTER (S0299=6mm LÄNGE) (x2)
ARTIKEL 15 = M10 VERBINDUNGSSTANGE (SB122=130mm LÄNGE) (x1)
ARTIKEL 16 = M8 VERBINDUNGSSTANGE (SB123=135mm LÄNGE) (x1)
ARTIKEL 17 = DISTANZHALTER (S0995=10mm LÄNGE) (x2)

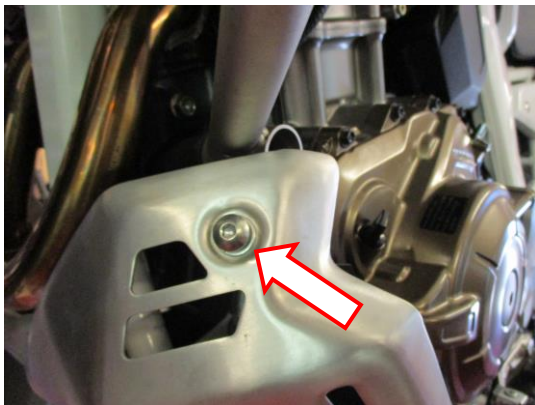


ABBILDUNG 1

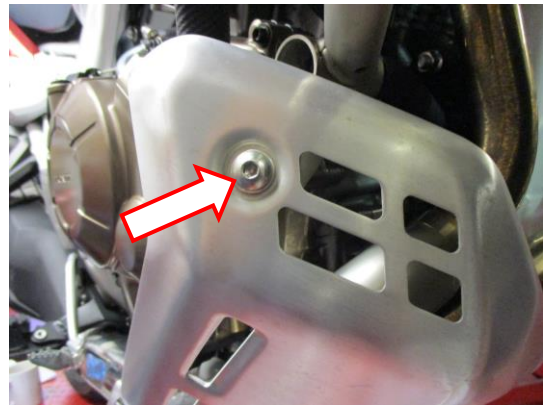


ABBILDUNG 2



ABBILDUNG 3



ABBILDUNG 4

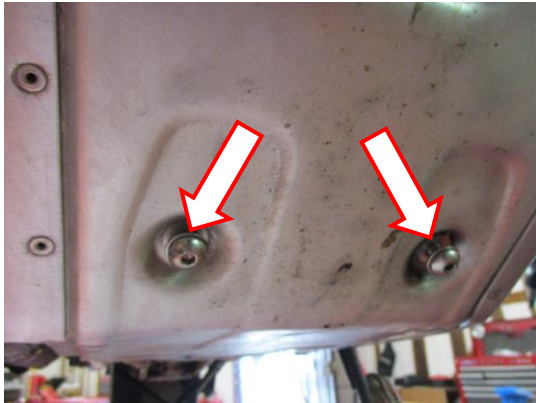


ABBILDUNG 5



ABBILDUNG 6

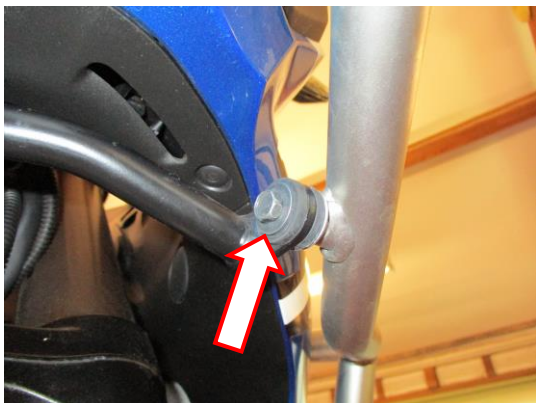


ABBILDUNG 7



ABBILDUNG 8



ABBILDUNG 9



ABBILDUNG 10

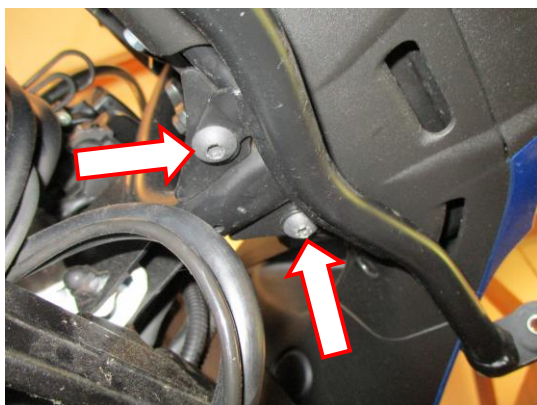


ABBILDUNG 11



ABBILDUNG 12



ABBILDUNG 13

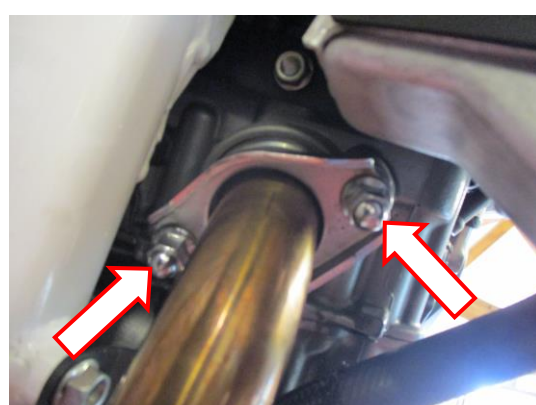


ABBILDUNG 14

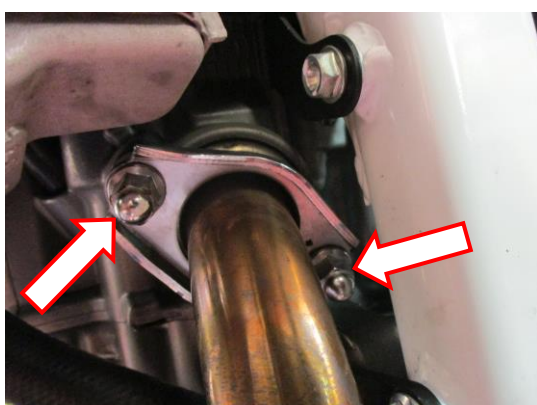


ABBILDUNG 15



ABBILDUNG 16

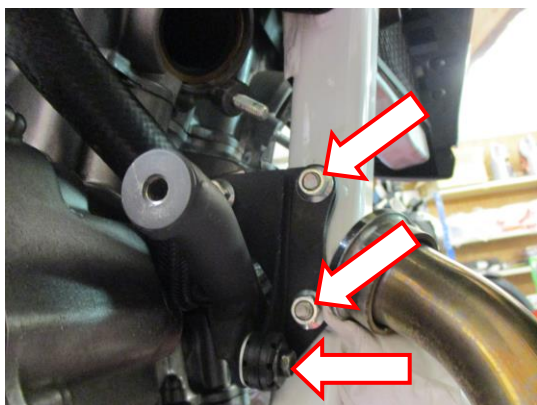


ABBILDUNG 17

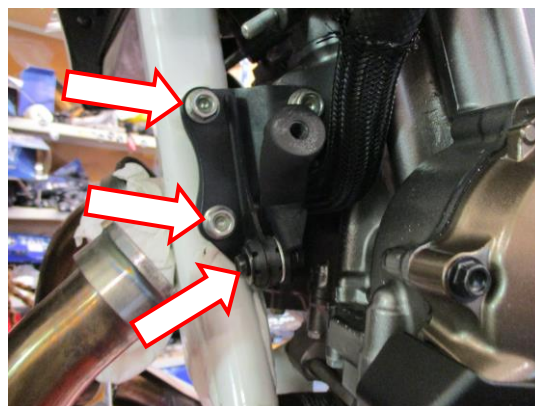


ABBILDUNG 18



ABBILDUNG 19

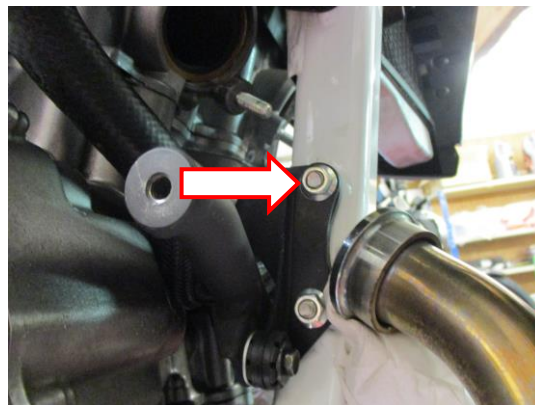


ABBILDUNG 20

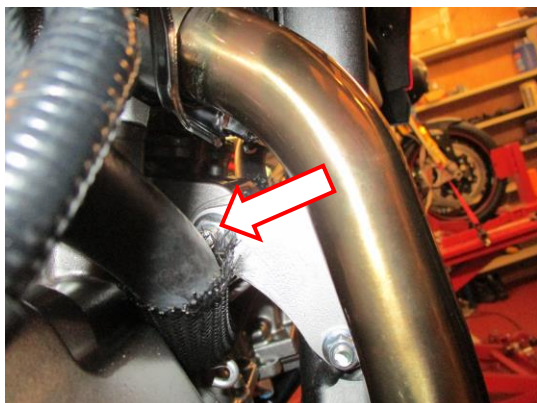


ABBILDUNG 21



ABBILDUNG 22



AB0035

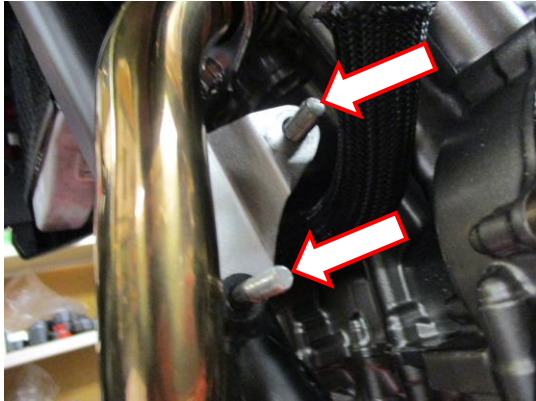


ABBILDUNG 23

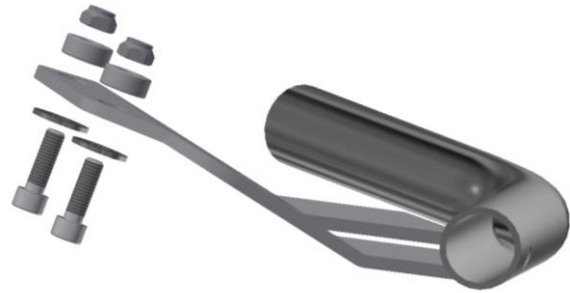


ABBILDUNG 24



ABBILDUNG 25

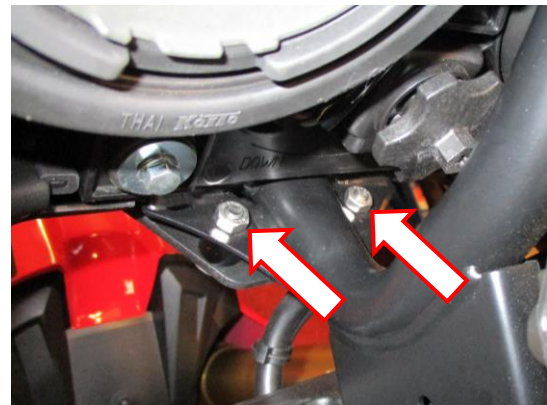


ABBILDUNG 26



ABBILDUNG 27



ABBILDUNG 28

R&G Racing

Unit 1 Shelleys Lane, East Worldham, Alton, Hants GU34 3AQ

Tel: +44 (0)1420 89007 Fax: +44 (0)1420 87301 www.rg-racing.com Email: info@rg-racing.com

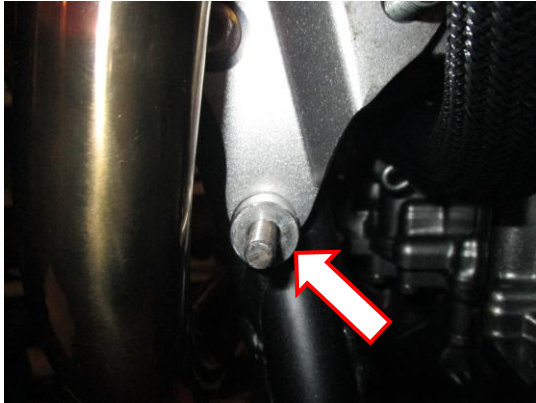


ABBILDUNG 29



ABBILDUNG 30



ABBILDUNG 31

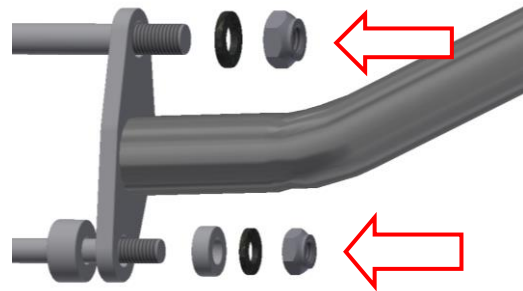


ABBILDUNG 32



ABBILDUNG 33

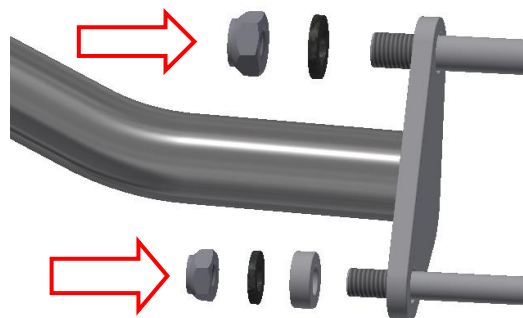


ABBILDUNG 34



ABBILDUNG 35



ABBILDUNG 36

MONTAGEANLEITUNG

Entfernung des original Ölwannenschutz/Motorschutz

- Entfernen Sie die vier Schrauben, die in den Abbildungen 1, 2, 3 und 4 markiert sind.
- Entfernen Sie die zwei Schrauben, die in Abbildung 5 gekennzeichnet sind – stützen Sie dabei den Motorschutz.
- Den Motorschutz herabsetzen und vom Fixierstift lösen, wie in Abbildung 6 abgebildet. Den Motorschutz entfernen.

Entfernung der original Dresser Bars

- Entfernen Sie die vier Schrauben, die in den Abbildungen 7, 8, 9 und 10 markiert sind, dann entfernen Sie die Dresser Bar – bitte darauf achten, dass sie die Verkleidungsteile hierbei nicht berührt.
- Entfernen Sie die zwei Schrauben, die in Abbildung 11 markiert sind und entfernen Sie die obere Dresser Bar Montagestange.
- Entfernen Sie den Kabelclip und trennen Sie den Steckverbinder – siehe Abbildung 12.
- Entfernen Sie die Mutter und die Schraube die in Abbildung 13 markiert sind.
- Entfernen Sie die vier Muttern für die Auspuffklemme, die in den Abbildungen 14 und 15 markiert sind (den Auspuff hierbei stützen).
- Während Sie den Auspuff stützen, entfernen Sie die Schraube, die in Abbildung 16 gekennzeichnet ist, dann den Auspuff vorsichtig entfernen.
- Entfernen Sie die zwei Muttern und die Schraube, die in Abbildung 17 markiert sind, und entfernen Sie die Montagehalterung für die untere Dresser Bar.
- Entfernen Sie die untere Schraube, die in Abbildung 18 markiert ist, und entfernen Sie die untere Dresser Bar Montagestange.
- Entfernen Sie die anderen zwei Schrauben, die in Abbildung 18 markiert sind und entfernen Sie die Montagehalterung für die untere Dresser Bar.
- Die obere Schraube und Mutter ersetzen wie ursprünglich – siehe Abbildungen 19 und 20.
- Der Auspuff kann nun wie ursprünglich montiert werden oder nachdem die Adventure Bars vollständig montiert sind.

Rechte Seite (in Fahrtrichtung)

- Entfernen Sie die Mutter, die in Abbildung 21 gekennzeichnet ist.

R&G Racing

Unit 1 Shelleys Lane, East Worldham, Alton, Hants GU34 3AQ

Tel: +44 (0)1420 89007 Fax: +44 (0)1420 87301 www.rg-racing.com Email: info@rg-racing.com



Linke Seite (in Fahrtrichtung)

- Entfernen Sie die obere Originalschraube, die in Abbildung 22 markiert ist (Hinweis: zwischen der Halterung und dem Rahmen ist ein Distanzhalter, der eventuell raus fallen kann - dieser Distanzhalter muss wieder montiert werden, wenn Sie die Verbindungsstange anbringen) und ersetzen Sie sie mit der großen Verbindungsstange (Artikel 15) und montieren Sie die kleinere Verbindungsstange (Artikel 16) in der unteren Öffnung – siehe Abbildung 23.
- Nehmen Sie die zwei M6 Schrauben und Unterlegscheiben (Artikel 3 und 4) und führen Sie sie durch die Längsöffnungen in der AB0035 Verbindungs-Halterklammer (Artikel 2). Die zwei Distanzhalter (Artikel 5=6mm Länge) an den hervorstehenden Enden der Schrauben anbringen –siehe Abbildung 24.
- Die Einheit in Position bringen wie in Abbildung 25 abgebildet und in die Gewinden einsetzen (zu diesem Zeitpunkt noch nicht festziehen). Bei Modellen vor 2018 benötigen Sie die zwei M6 selbstsichernde Muttern (Artikel 1) wie in Abbildung 26 abgebildet (bitte die Mutter komplett einrasten jedoch noch nicht komplett festziehen).
- Einen Rohrverbinder (Artikel 8) in das offene Ende der AB0035 Verbindungshalteklammer einführen und mit einer kleinen M6 Schraube (Artikel 9) in Position fixieren – siehe Abbildung 27 (zu diesem Zeitpunkt noch nicht festziehen).
- Den Distanzhalter (Artikel 17=10mm Länge) am hervorstehenden Ende der unteren Verbindungsstange anbringen wie in den Abbildungen 28 und 29 abgebildet.
- Die linke Adventure Bar (Artikel 6) in Position bringen wie in Abbildung 30 abgebildet - eine M10 Unterlegscheibe (Artikel 11) und eine M10 selbstsichernde Mutter (Artikel 10) an der unteren Verbindungsstange montieren (noch nicht festziehen) wie in den Abbildungen 30 und 32 abgebildet.
- Das obere Ende der Adventure Bar in das hervorstehende Ende des Rohrverbinders einführen und mit einer der kleineren M6 Inbusschrauben (Artikel 9) befestigen – siehe Abbildung 31.
- Wenn Sie die AB0021 (untere Adventure Bars) nicht verwenden, eine der dünneren Distanzhalter (Artikel 14=6mm breit) gefolgt von einer M8 Unterlegscheibe (Artikel 13) und einer M8 selbstsichernden Muttern (Artikel 12) an der unteren Verbindungsstange anbringen wie in Abbildung 32 abgebildet (noch nicht festziehen).

Rechte Seite (in Fahrtrichtung)

- Den übrige Rohrverbinder (Artikel 8) in das offene Ende der AB0035 Verbindungshalteklammer einführen und mit einer kleinen M6 Schraube (Artikel 9) in Position fixieren – siehe Abbildung 35 (zu diesem Zeitpunkt noch nicht festziehen).
- Die rechte Adventure Bar (Artikel 7) in Position bringen wie in Abbildung 33 - eine M10 Unterlegscheibe (Artikel 11) und ein M10 selbstsichernde Mutter (Artikel 10) an der unteren Verbindungsstange montieren (noch nicht festziehen) wie in den Abbildungen 33 und 34 abgebildet.
- Das obere Ende der Adventure Bar in das hervorstehende Ende des Rohrverbinders einführen und mit einer der kleineren M6 Inbusschrauben (Artikel 9) befestigen – siehe Abbildung 36.
- Wenn Sie die AB0021 (untere Adventure Bars) nicht verwenden, eine der dünneren Distanzhalter (Artikel 14=6mm breit) gefolgt von einer M8 Unterlegscheibe (Artikel 13) und einer M8 selbstsichernden Muttern (Artikel 12) an der unteren Verbindungsstange anbringen wie in Abbildung 44 abgebildet (noch nicht festziehen).
- Anschließend alle Mutter und Schrauben festziehen – bitte darauf achten, dass die Adventure Bars andere Motorradteile nicht berühren und/oder beschädigen können.
- Wenn noch nicht bereits wieder montiert, montieren Sie den Auspuff wie ursprünglich wieder.



- Hinweis wenn Sie den original Motorschutz wieder montieren – dieser wird zwei der Lagerpunkte nicht haben – siehe Abbildungen 1 und 2. Wenn Sie den Motorschutz nicht anbauen, ist es möglich, die unteren Adventure Bars (Artikel-Nr. AB0021) zu montieren.

CONSUMER NOTICE

The catalogue description and any exhibition of samples are only broad indications of the Products and R&G may make design changes which do not diminish their performance or visual appeal and supplying them in such state shall conform to the order. The Buyer acknowledges no representation or warranty (other than as to title) has been given or will apply to the Products other than those in R&G's order or confirmation and the Buyer confirms it has chosen the Products as being of merchantable quality and suitable for its particular purposes. Where R&G fits the Products or undertakes other services it shall exercise reasonable skill and care and rectify any fault free of charge unless the workmanship has been disturbed. The Buyer is responsible for ensuring that the warranty on the motorcycle is not affected by the fitting of the Products. On return of any defective Products R&G shall at its option either supply a replacement or refund the purchase money but shall not be liable if the Products have been modified or used or maintained otherwise than in accordance with R&G's or manufacturer's instructions and good engineering practice or if the defect arises from accident or neglect. Other than identified above and subject to R&G not limiting its liability for causing death and personal injury, it shall not be liable for indirect or consequential loss and otherwise its liability shall be limited to the amounts paid by the Buyer for the Products or the fitting or service concerned. These terms do not affect the Buyer's statutory rights.

R&G RACING RETURNS POLICY (NON-FAULTY GOODS)

Returns must be pre-authorized (if not pre-authorized the return will be rejected). Goods may only be returned direct to us if they were purchased direct from us (customer must prove if necessary). Otherwise to be returned to original vendor. Goods must be in re-sellable condition, in the opinion of R&G Racing. All returns are subject to a 25% restocking and handling fee (25% of the gross value exc. P&P – at the prevailing price at time of purchase). The customer must pay any and all carriage charges. No returns of discontinued products, unless within 14 days of purchase. This policy does not affect your statutory rights and does not refer to faulty goods.

R&G Racing

Unit 1 Shelleys Lane, East Worldham, Alton, Hants GU34 3AQ

Tel: +44 (0)1420 89007 Fax: +44 (0)1420 87301 www.rg-racing.com Email: info@rg-racing.com