

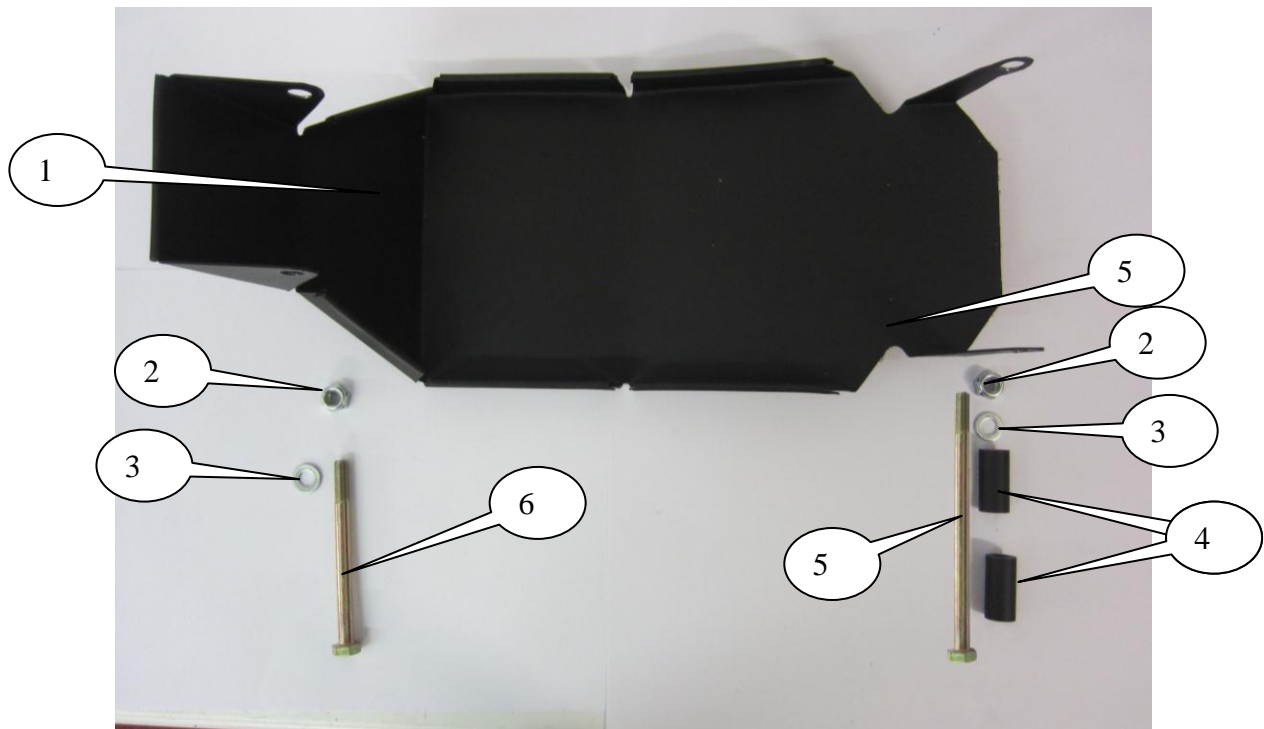


**FITTING INSTRUCTIONS FOR BP0005BK BASH PLATE**  
**HUSQVARNA TR650 STRADA 2012**

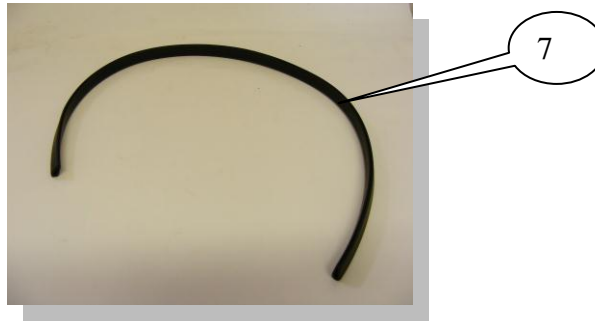
Page | 1



**THIS KIT CONTAINS THE ITEMS PICTURED AND LABELLED BELOW.**  
**DO NOT PROCEED UNTIL YOU ARE SURE ALL PARTS ARE PRESENT.**



THE PARTS SHOWN MAY BE REPRESENTATIVE ONLY (FOR CLARITY OF INSTRUCTIONS ONLY)



**Please note that the way the kit is packed does not necessarily represent the way of mounting to the bike.**

Please note that in cases where kits are packed with rubber washers holding the components onto the bolt – *the rubber washers should be thrown away!*

#### **TOOLS REQUIRED**

- Socket set to include 16 and 17mm sockets and wrench.
- T50 Torx's bit and wrench.

#### **LEGEND**

ITEM 1 = SMW0012 BASH PLATE (x1).

ITEM 2 = M10 x 1.25 NYLOC NUTS (x2).

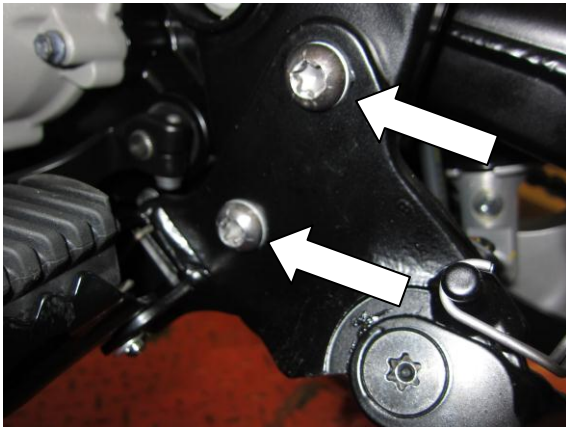
ITEM 3 = M10 WASHER (x2).

ITEM 4 = S0564 SPACERS (REAR = 40mm LONG) (x2).

ITEM 5 = M10 x 180mm LONG HEX HEAD BOLT (REAR MOUNT) (x1).

ITEM 6 = M10 x 120mm LONG HEX HEAD BOLT (FRONT MOUNT) (x1).

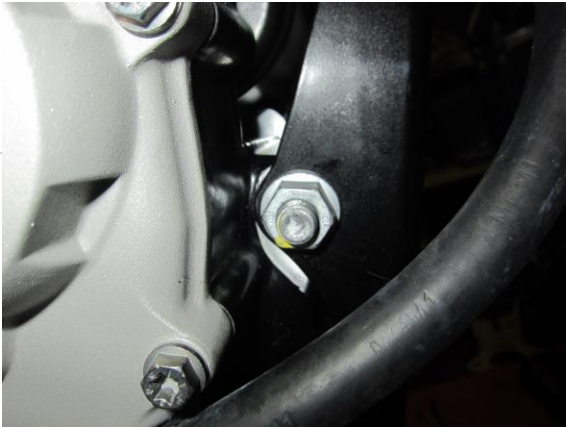
ITEM 7 = RUBBER EDGING SEAL (SRS002) 800mm LONG.



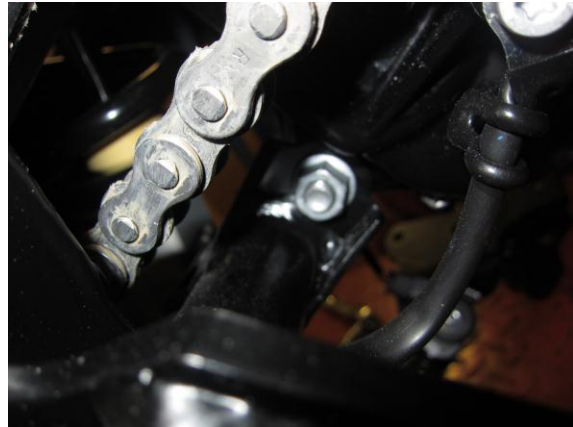
PICTURE 1



PICTURE 2



PICTURE 3



PICTURE 4



PICTURE 5



PICTURE 6

### **FITTING INSTRUCTIONS**

- CUT AND APPLY THE RUBBER EDGING SEAL (ITEM 7) ALONG THE TOP AND FRONT EDGES OF THE BASH-PLATE (ITEM 1) AS SHOWN IN TOP PICTURE (PLEASE USE ADHESIVE TO HOLD IN POSITION).
- REMOVE THE TWO BOLTS ARROWED IN PICTURE 1 AND REMOVE THE SIDE STAND/FOOT PEG BRACKET ON THE LEFT HAND SIDE AS SHOWN IN PICTURE 2.
- DISCONNECT THE SIDE STAND SENSOR PLUG SOCKET AS SHOWN IN PICTURE 2.
- REMOVE THE NUT SHOWN IN PICTURE 3 FROM THE RIGHT HAND SIDE AND REMOVE THE BOLT FROM THE LEFT HAND SIDE. (PLEASE ENSURE THE ENGINE DOES NOT SAG).
- REMOVE THE NUT SHOWN IN PICTURE 4 FROM THE RIGHT HAND SIDE AND REMOVE THE BOLT FROM THE LEFT HAND SIDE. (PLEASE ENSURE THE ENGINE DOES NOT SAG).
- OFFER THE BASH-PLATE INTO POSITION AS SHOWN IN THE TOP PICTURE.



- USING THE SHORTER BOLT THROUGH THE FRONT MOUNT SECURE THE BASH-PLATE USING ONE OF THE M10 NUTS AND WASHERS FROM KIT AS SHOWN IN PICTURE 5.
- PLACE THE LONGER REMAINING M10 BOLT THROUGH THE REAR MOUNTING HOLE IN THE BASH-PLATE THEN PLACE ONE OF THE SPACERS OVER THE BOLT AS SHOWN IN PICTURE 6, PUSH THE BOLT THROUGH THE MOUNTING HOLE IN THE MOTORCYCLE AND THEN PLACE THE REMAINING SPACER OVER THE BOLT AND CONTINUE TO PUSH THE BOLT THROUGH THE OTHER REAR MOUNTING HOLE IN THE BASH-PLATE.
- SECURE THE REAR BOLT USING THE REMAINING NUT AND WASHER.
- RECONNECT THE SIDE STAND SENSOR.
- REFIT AND SECURE THE SIDE STAND/FOOT PEG BRACKET AS ORIGINAL.

Issue 1 01/11/2012 (NSY)

#### **CONSUMER NOTICE**

The catalogue description and any exhibition of samples are only broad indications of the Products and R&G may make design changes which do not diminish their performance or visual appeal and supplying them in such state shall conform to the order. The Buyer acknowledges no representation or warranty (other than as to title) has been given or will apply to the Products other than those in R&G's order or confirmation and the Buyer confirms it has chosen the Products as being of merchantable quality and suitable for its particular purposes. Where R&G fits the Products or undertakes other services it shall exercise reasonable skill and care and rectify any fault free of charge unless the workmanship has been disturbed. The Buyer is responsible for ensuring that the warranty on the motorcycle is not affected by the fitting of the Products. On return of any defective Products R&G shall at its option either supply a replacement or refund the purchase money but shall not be liable if the Products have been modified or used or maintained otherwise than in accordance with R&G's or manufacturer's instructions and good engineering practice or if the defect arises from accident or neglect. Other than identified above and subject to R&G not limiting its liability for causing death and personal injury, it shall not be liable for indirect or consequential loss and otherwise its liability shall be limited to the amounts paid by the Buyer for the Products or the fitting or service concerned. These terms do not affect the Buyer's statutory rights.

#### **R&G RACING RETURNS POLICY (NON-FAULTY GOODS)**

Returns must be pre-authorized (if not pre-authorized the return will be rejected). Goods may only be returned direct to us if they were purchased direct from us (customer must prove if necessary). Otherwise to be returned to original vendor. Goods must be in resellable condition, in the opinion of R&G Racing. All returns are subject to a 25% restocking and handling fee (25% of the gross value exc. P&P – at the prevailing price at time of purchase). The customer must pay any and all carriage charges. No returns of discontinued products, unless within 14 days of purchase. This policy does not affect your statutory rights and does not refer to faulty goods.