



FITTING INSTRUCTIONS FOR LP0258BK LICENCE PLATE BRACKET
HUSQVARNA VITPILEN 701 2018
(FOR USE WITH STANDARD AND R&G MINI INDICATORS (8mm))



THIS KIT CONTAINS THE ITEMS PICTURED AND LABELLED BELOW.
DO NOT PROCEED UNTIL YOU ARE SURE ALL PARTS ARE PRESENT.

Please note that the way the kit is packed does not necessarily represent the way of mounting to the bike

THE PARTS SHOWN MAY BE REPRESENTATIVE ONLY (FOR CLARITY OF INSTRUCTIONS ONLY)

Digital copies of these instructions are available to download from www.rg-racing.com

GENERAL TORQUE SETTINGS

- M4 BOLT = 8Nm
- M5 BOLT = 12Nm
- M6 BOLT = 15Nm
- M8 BOLT = 20Nm
- M10 BOLT = 40Nm

Please note that in cases where kits are packed with rubber washers holding the components onto the bolt – *the rubber washers should be thrown away!*

TOOLS REQUIRED

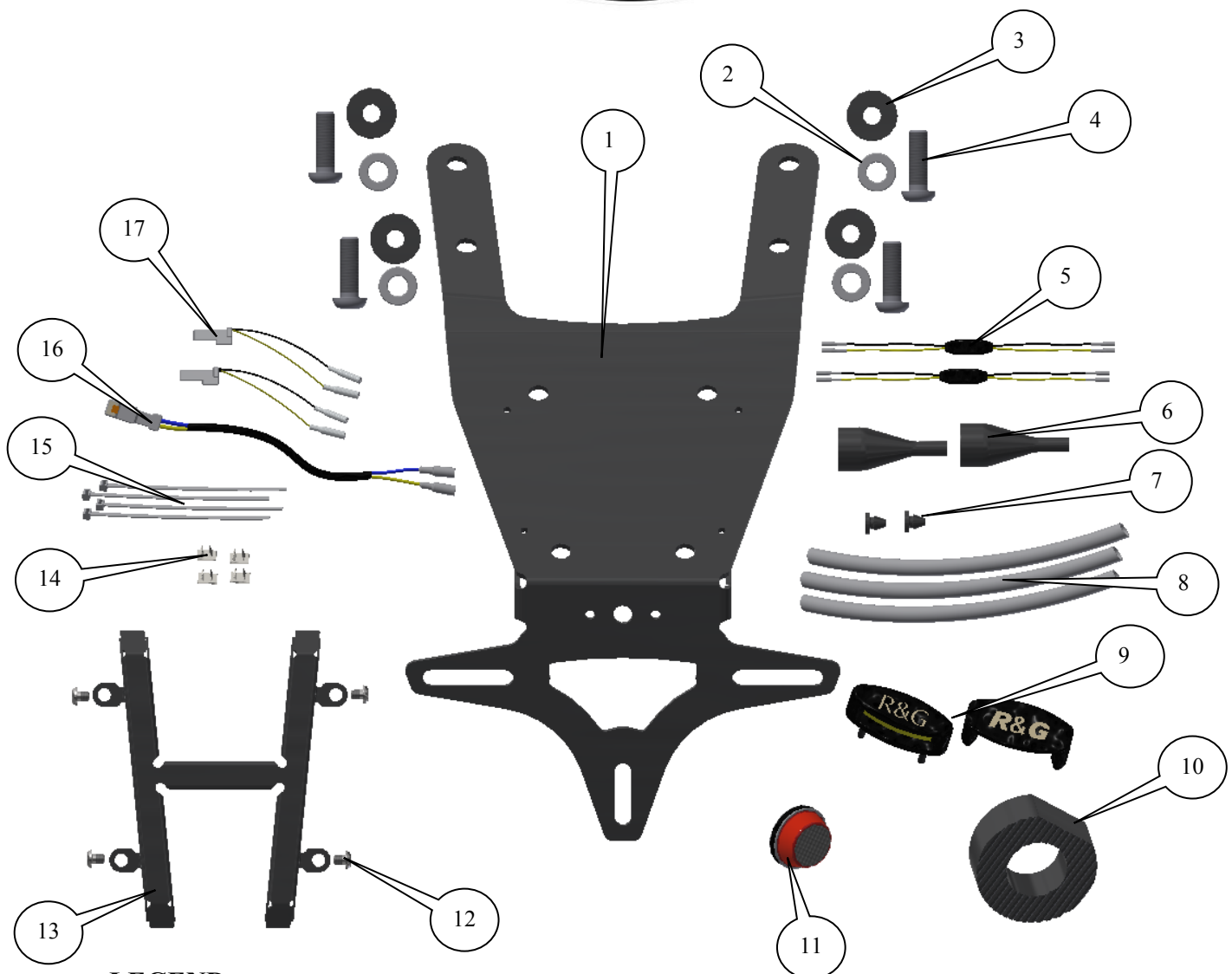
- Set of metric Allen keys to include 2.5 and 5mm A/F .
- Socket set to include 6, 12 and 13mm A/F socket and wrench.
or
- Set of metric spanners to include 6, 12 and 13mm A/F sizes.
 - 32mm Socket and Torque Wrench up to 90Nm.
 - Torx bits to include T30 and 40.
 - Flat bladed driver.
 - Electrical pliers/crimps.
 - Small amount of super glue.
 - 9mm Drill bit.
 - Drill.
 - Heat gun or hair dryer.

R&G

Unit 1, Shelley's Lane, East Worldham, Alton, Hampshire, GU34 3AQ
Tel: +44 (0)1420 89007 Fax: +44 (0)1420 87301 www.rg-racing.com Email: info@rg-racing.com



LP0258

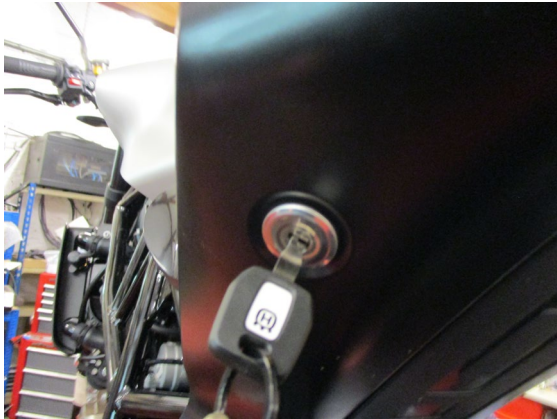
**LEGEND**

- ITEM 1 = LICENCE PLATE BRACKET (TB0258) (x1).
 ITEM 2 = M8 WASHER (x4).
 ITEM 3 = RUBBER WASHERS (RW003) (x2).
 ITEM 4 = M8 x 25mm LONG BUTTON HEAD BOLTS (x4).
 ITEM 5 = RGR0003 4W SPECIAL RESISTORS (x2).
 ITEM 6 = SILICON INDICATOR NUT COVERS (IWC0002) (x2).
 ITEM 7 = SMALL RUBBER GROMMETS (RB50-20-00FG) (x2).
 ITEM 8 = 230mm LENGTH OF HEAT SHRINK (x3).
 ITEM 9 = LICENCE PLATE ILLUMINATOR ASSEMBLY (LA0002) (x1).
 ITEM 10 = REPLACEMENT CHAIN ADJUSTOR BLOCK (S1153) (x1).
 ITEM 11 = REFLECTOR (REFL 1) (x1).
 ITEM 12 = M4 x 5mm LONG BUTTON HEAD BOLTS (x4).
 ITEM 13 = WIRING COVER (TB0250BK PART 2) (x1).
 ITEM 14 = CABLE CLIPS (x4).
 ITEM 15 = CABLE TIES (x4).
 ITEM 16 = LICENCE PLATE ILLUMINATOR CONNECTOR (CON0026) (x1).
 ITEM 17 = MINI INDICATOR CONNECTORS (CON0014) (x2).

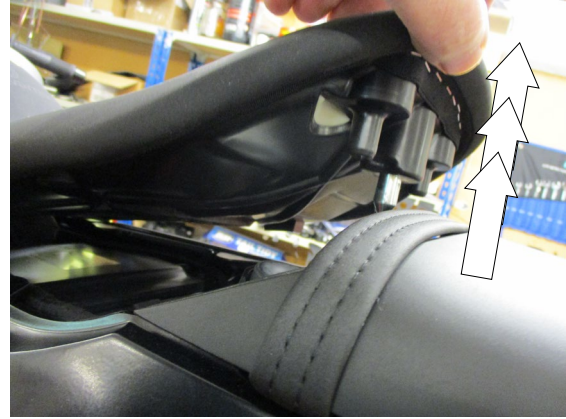
R&G

Unit 1, Shelley's Lane, East Worldham, Alton, Hampshire, GU34 3AQ

Tel: +44 (0)1420 89007 Fax: +44 (0)1420 87301 www.rg-racing.com Email: info@rg-racing.com



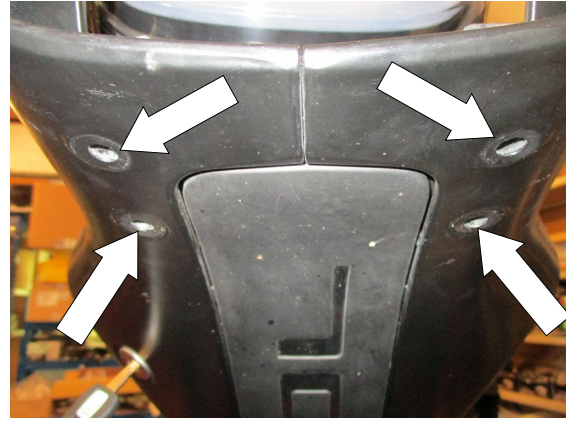
Picture 1



Picture 2



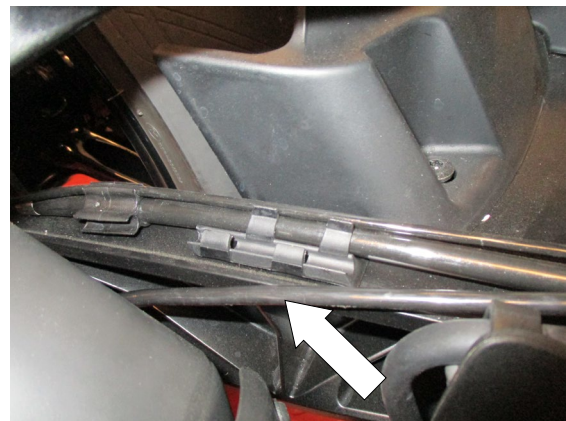
Picture 3



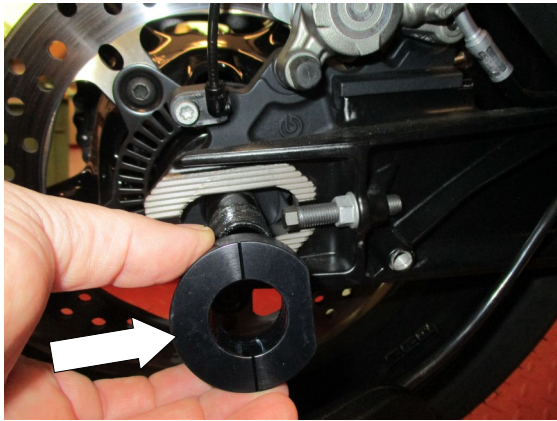
Picture 4



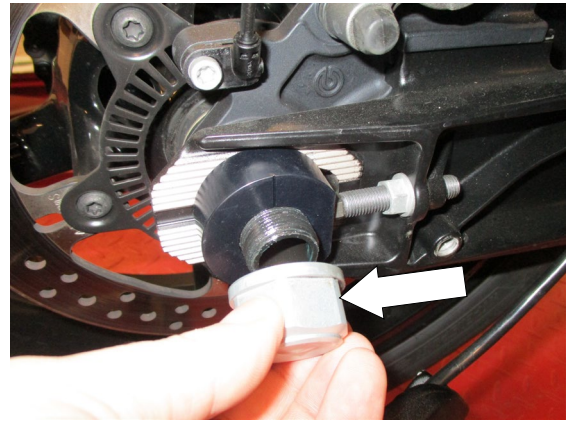
Picture 5



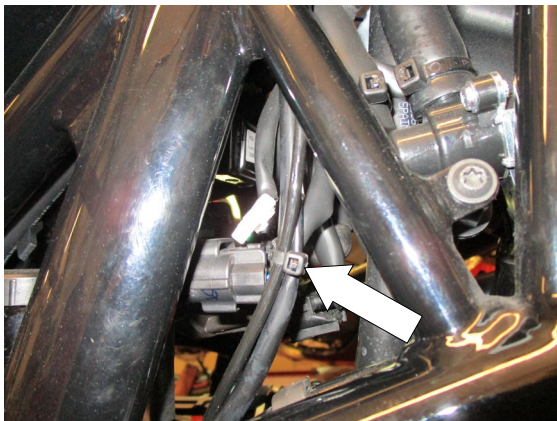
Picture 6



Picture 7



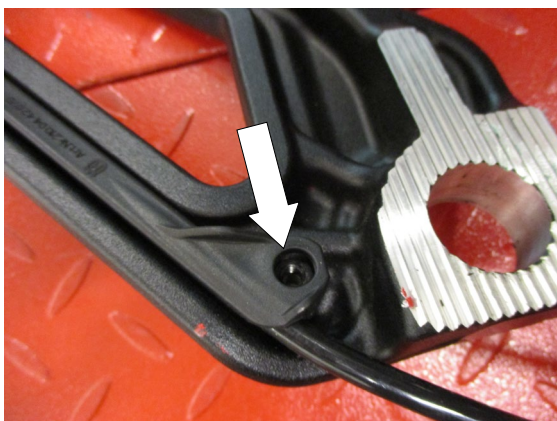
Picture 8



Picture 9



Picture 10



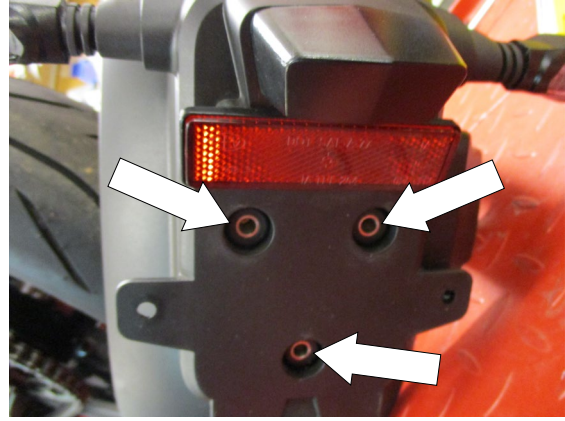
Picture 11



Picture 12



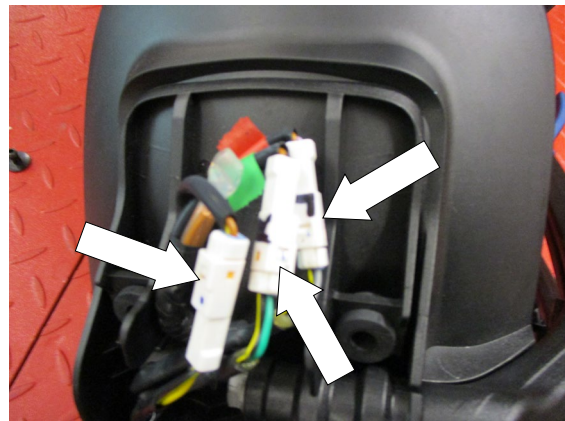
Picture 13



Picture 14



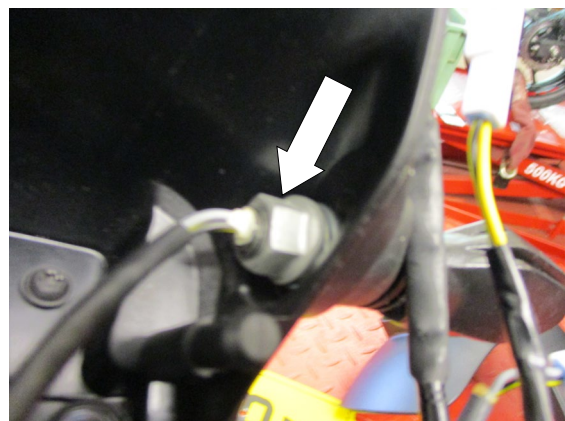
Picture 15



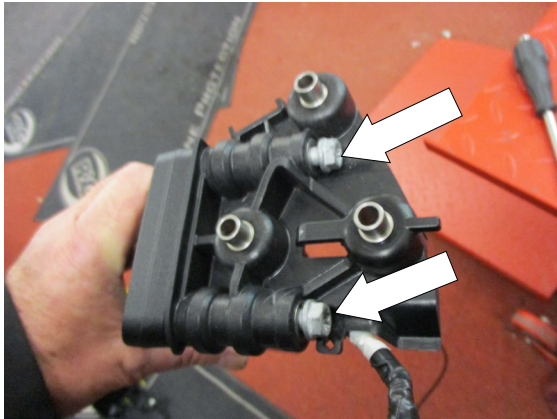
Picture 16



Picture 17



Picture 18



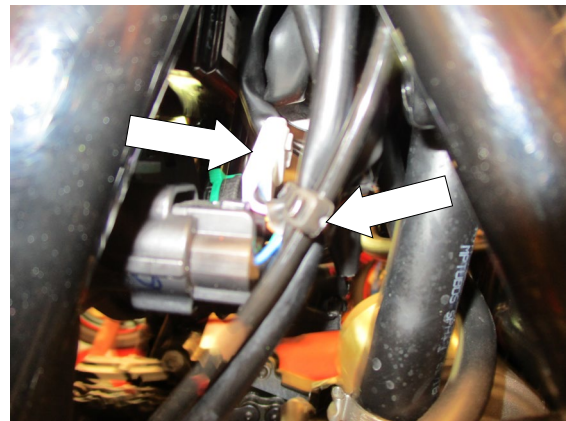
Picture 19



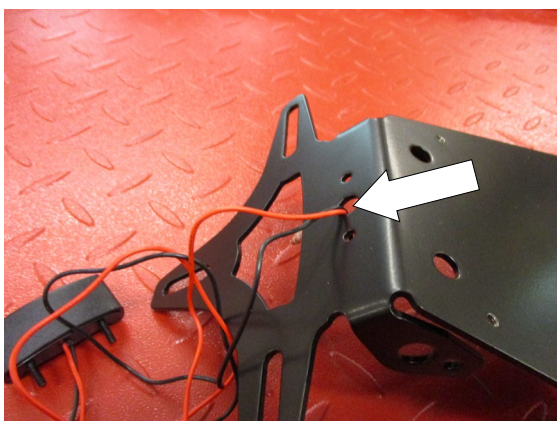
Picture 20



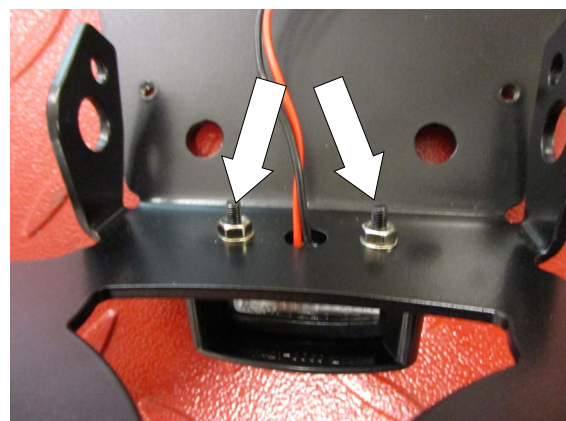
Picture 21



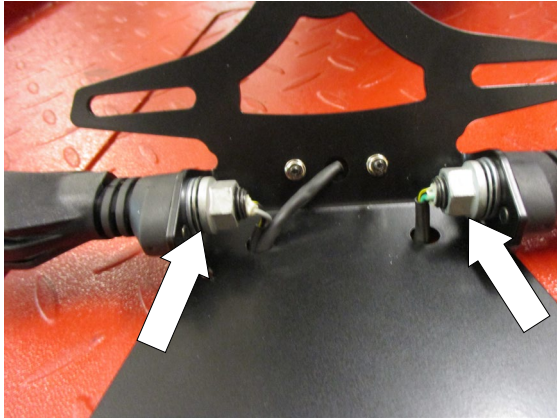
Picture 22



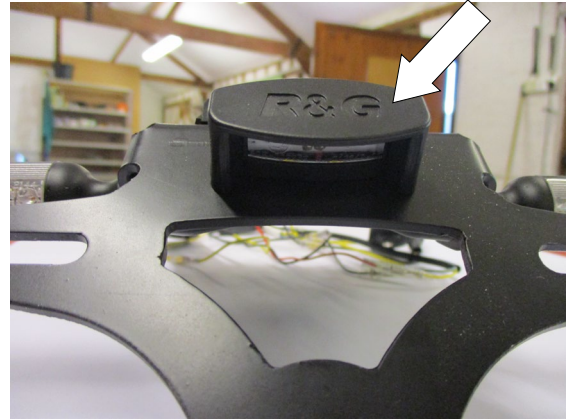
Picture 23



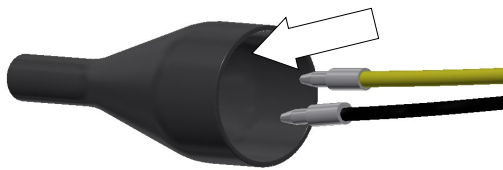
Picture 24



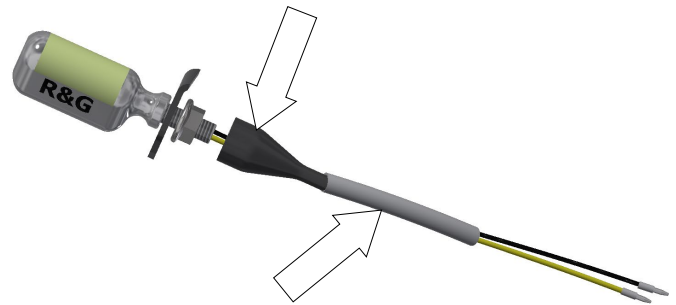
Picture 25



Picture 26



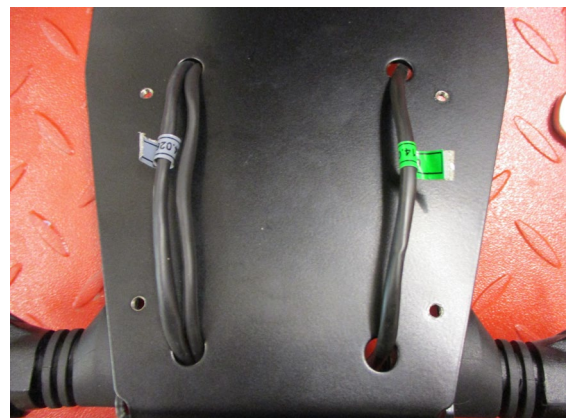
Picture 25



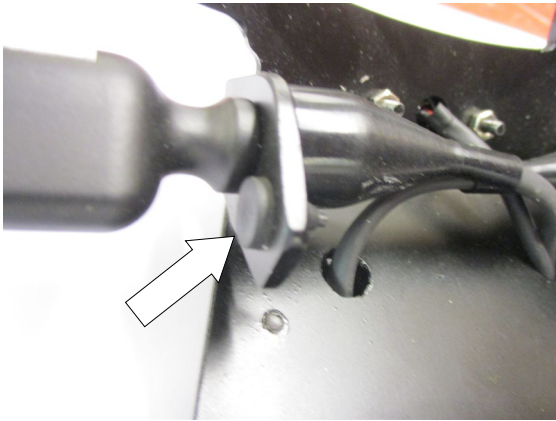
Picture 26



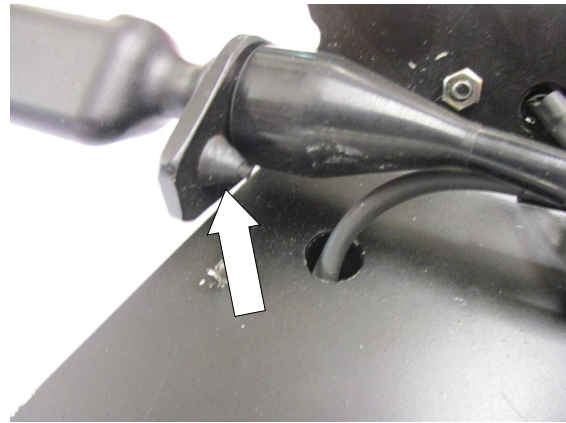
Picture 27



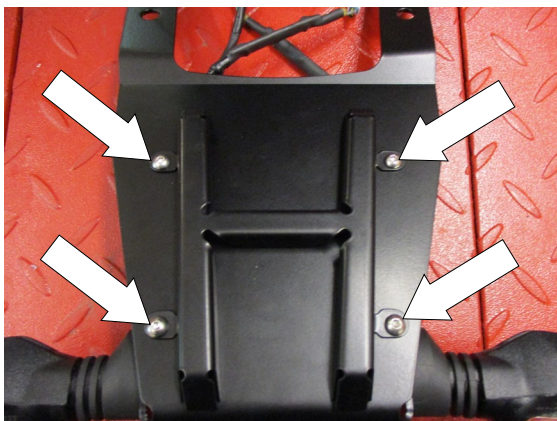
Picture 28



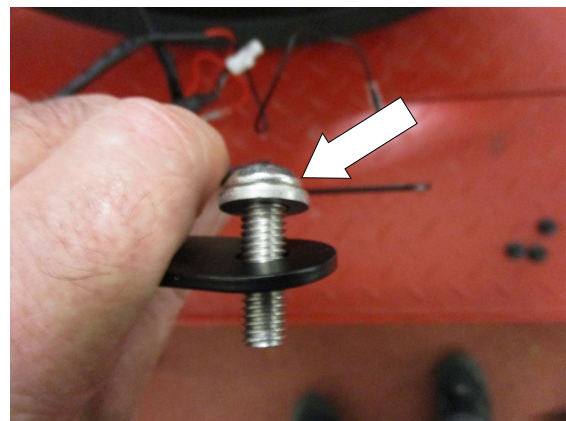
Picture 29



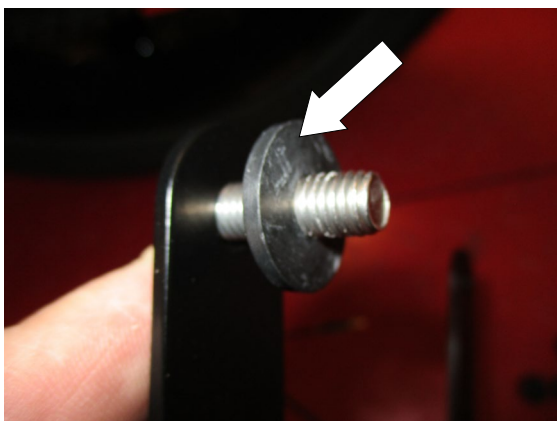
Picture 30



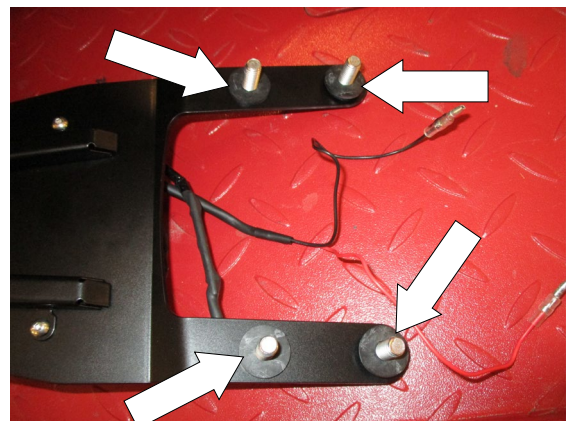
Picture 31



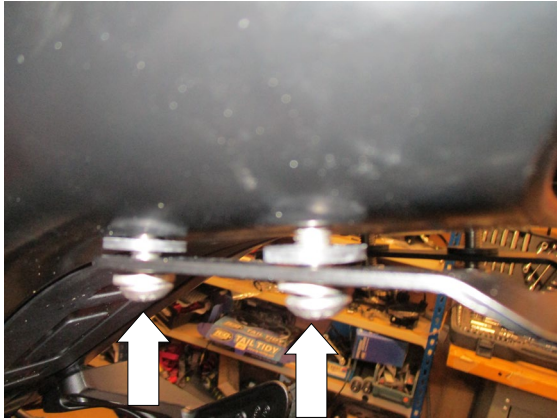
Picture 32



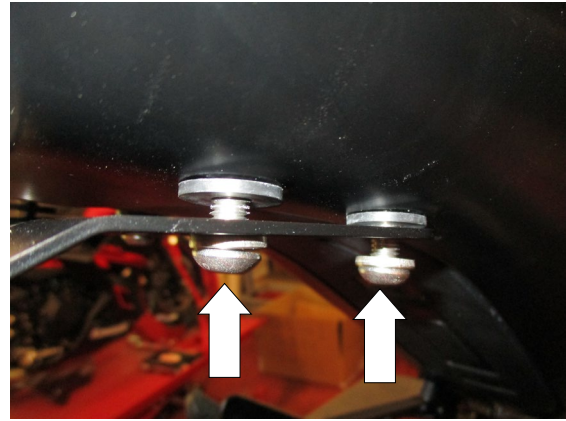
Picture 33



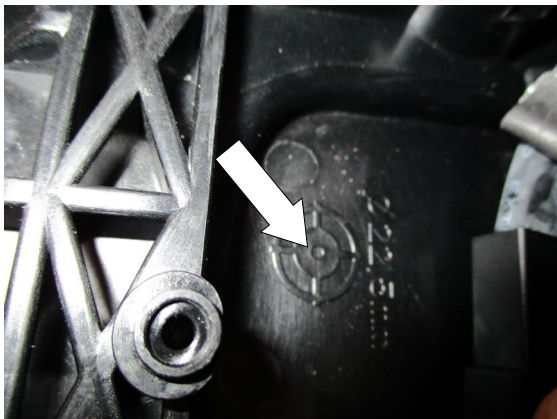
Picture 34



Picture 35



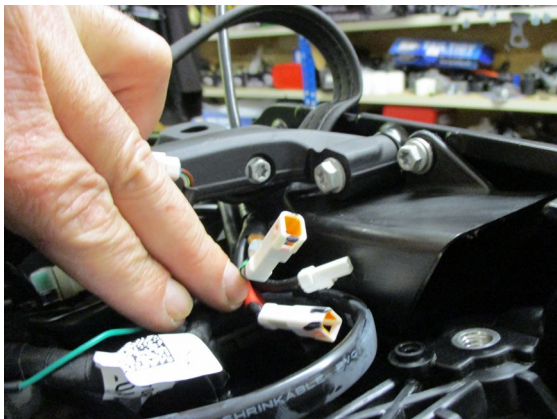
Picture 36



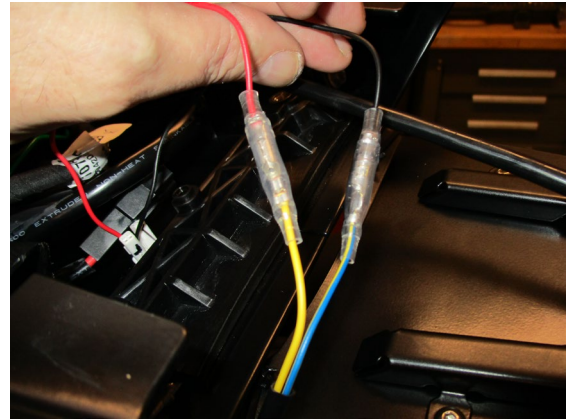
Picture 37



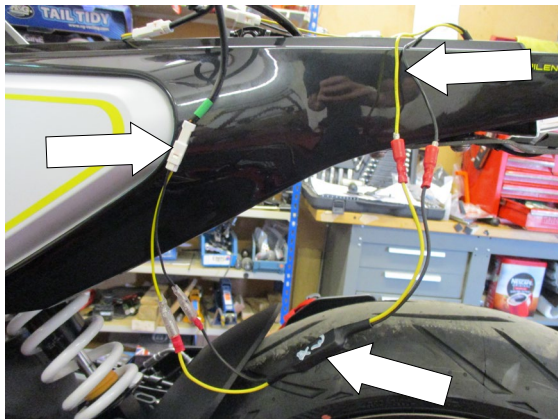
Picture 38



Picture 39



Picture 40



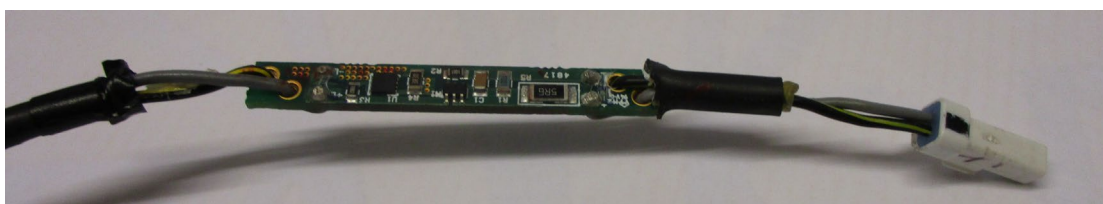
Picture 41



Picture 42

FITTING INSTRUCTIONS

Please note when removing or refitting the original indicators special care must be taken not to damage the circuit board that is located near the plug socket as shown below (this board will be damaged if distorted or if cable ties are used directly onto it —so care should be taken).



- To fit the R&G tail tidy, first remove the riders seat using the key as shown in pictures 1 and 2.
- Remove the passenger seat by pushing in the direction indicated in picture 3 (you do not have to remove completely).
- Remove the four plastic rivets arrowed in picture 4.
- Remove the original rear spindle nut arrowed in picture 5.
- Carefully pull the original licence plate bracket away from the motorcycle and unclip the wiring as shown in picture 6.
- Replace the bracket with the grooved chain adjuster block (item 10) as shown in picture 7 (please ensure the grooved face fits into the grooved swingarm).
- Replace the original rear spindle nut and tighten to the original manufacturers torque (90Nm) as shown in picture 8, you will not have to adjust the chain as the spacer is a direct replacement.
- Follow the wiring along the swingarm and remove the cable tie arrowed in picture 9 and disconnect the wiring plug shown in picture 10, then remove the entire assembly from the motorcycle.
- Remove the bolts and cable tie arrowed in pictures 11 and 12.
- Remove the cable cover as arrowed in picture 13.
- Remove the three bolts arrowed in picture 14.
- Carefully pull the indicator/licence plate illuminator bracket away from the main bracket as indicated in picture 15.
- Unplug the three plug sockets arrowed in picture 16 (it is a good idea to mark the sockets for ease of reassembly).
- If reusing the original indicators remove the nuts arrowed in pictures 17 and 18 and remove the indicators.

R&G

Unit 1, Shelley's Lane, East Worldham, Alton, Hampshire, GU34 3AQ

Tel: +44 (0)1420 89007 Fax: +44 (0)1420 87301 www.rg-racing.com Email: info@rg-racing.com



- Loosen the two bolts arrowed in picture 19 to allow the original wiring to be removed for reassembly.
- Feed the wiring just removed through the frame under the fuel tank as shown in picture 20 (please ensure the end with the single plug socket in feed through in the direction of the arrow).
- Position the single plug socket end of the wiring through the frame, then reconnect and cable tie as original (shown in pictures 21 and 22).
- Feed the wires of the new R&G licence plate illuminator (item 9) through the central hole in the new licence plate bracket (item 1) as shown in picture 23.
- Secure using the washers and nut supplied as shown in picture 24.
- Fit one length of heat-shrink (item 8) to the wires and heat gently to shrink to fit. It is a good idea to reconnect to the wiring loom using the supplied connector (item 16) to check at this stage the wiring should follow the below,

Licence plate illuminator red wire is attached to the connector yellow wire
 Licence plate illuminator black wire is attached to the connector blue/yellow wire
 as shown in picture 40, (if illumination fails, swap the bullet connections around).

If reusing the original indicators

- Fit the indicators into the new licence plate bracket (item 1) and secure as original (please ensure they are fitted to the correct side) as shown in picture 25.
- Please note you will have to fit the light shroud to the licence plate illuminator and use a small amount of adhesive to hold it in position as shown in picture 26.

If using the mini indicators

- To fit the R&G Mini Indicators (R&G mini indicator product code RG371 for LED type or RG372 for Aero Style led type).
- Position the two indicators onto the larger hole in the new licence plate bracket, before fitting the flanged nut supplied, as shown below.



- Feed the indicator wiring through the nut/wire cover (item 6) as shown in pictures 25 and 26 (it helps if a small amount of liquid detergent is used) and position the nut cover over the nut as shown in picture 27 (repeat the above for the opposite indicator).
- Fit one length of heat-shrink (item 8) over the wires of each indicator so the heat-shrink fits over the stem of the nut/wire cover and gently heat until the heat-shrink contracts to the wiring and nut/wire cover as shown in pictures 26, and 27.
- Feed the indicator and licence plate illuminator wiring through the holes in the licence plate bracket as shown in pictures 27 and 28.
- Fit the two smaller rubber grommets (item 7) into the holes as shown in pictures 29 and 30 (it helps if a small amount of liquid detergent is used) if R&G indicators are being used.
- Fit the wiring cover (item 13) using the four M4 button head bolts (item 12) as shown in picture 31.
- Place one of the M8 washers (item 2) onto each of the M8 bolts (item 4), then place each bolt through the licence plate bracket (item 1) as shown in picture 32.
- Then place one of the rubber washers (item 3) over the exposed threads of each bolt as shown in pictures 33 and 34 (the rubber washer will hold the bolts in place).

R&G

Unit 1, Shelley's Lane, East Worldham, Alton, Hampshire, GU34 3AQ

Tel: +44 (0)1420 89007 Fax: +44 (0)1420 87301 www.rg-racing.com Email: info@rg-racing.com



- Carefully feed all the wiring through the under-tray and offer the assembly up to the motorcycle as shown in picture 21.
- Offer this assembly into position tighten as shown in pictures 35 and 36 (please ensure the bracket does not contact or damage any part of the motorcycle while tightening).
- Carefully drill a 9mm hole in the under-tray in the position marked as shown in picture 37, please remove all sharp edges.
- Secure the wires using the cable ties and clips (items 14 and 15) as shown in picture 38.
- Then feed the wires through the drilled hole in the under-tray as shown in picture 38. PLEASE ENSURE NOT TO DAMAGE THE CIRCUIT BOARD THAT IS LOCATED NEAR THE PLUG SOCKET.
- Position the original wiring along the rear subframe and under the seat lock bracket as shown in picture 39 (please ensure no parts impede or come in contact when the seats are refitted).
- Connect the licence plate illuminator using the supplied connector as shown in 40.
- If using R&G led mini indicators, you will have to use the supplied resistor on each indicator (item 5) to achieve the correct flash rate (as shown in picture 41). It is a good idea to connect the indicators to the main loom using the supplied connectors (item 17) at this stage, if illumination fails please swap the bullet connection around.
- Tidy and position the wiring in an appropriate position using the cable ties and clips provided (items 14 and 15) as shown in picture 42.
- Ensure all wiring plug sockets are connected as shown in picture 42.
- Refit the seats as original and the licence plate (it may require drilling).
- Please check the operation of all lights before riding the motorcycle.
 - **IMPORTANT: IF FITTING A FULL-SIZE LICENCE PLATE AND PLACING IT FAR DOWN ON THE LICENCE PLATE HANGER, THERE IS A SMALL CHANCE OF THE LICENCE PLATE HITTING THE BACK WHEEL UNDER HEAVY LOAD AND OVER LARGE BUMPS IN THE ROAD. IT IS YOUR RESPONSIBILITY TO CHECK FOR THIS POSSIBILITY AND TAKE AVOIDING ACTION. FAILURE TO CHECK THIS COULD RESULT IN SERIOUS INJURY.**
- Depending on local laws, attach enclosed reflector (item 11) in an appropriate location
- Retest the license plate illuminator and all lights before riding.

ISSUE 1 06/11/2018 (NSY)

CONSUMER NOTICE

The catalogue description and any exhibition of samples are only broad indications of the Products and R&G may make design changes which do not diminish their performance or visual appeal and supplying them in such state shall conform to the order. The Buyer acknowledges no representation or warranty (other than as to title) has been given or will apply to the Products other than those in R&G's order or confirmation and the Buyer confirms it has chosen the Products as being of merchantable quality and suitable for its particular purposes. Where R&G fits the Products or undertakes other services it shall exercise reasonable skill and care and rectify any fault free of charge unless the workmanship has been disturbed. The Buyer is responsible for ensuring that the warranty on the motorcycle is not affected by the fitting of the Products. On return of any defective Products R&G shall at its option either supply a replacement or refund the purchase money but shall not be liable if the Products have been modified or used or maintained otherwise than in accordance with R&G's or manufacturer's instructions and good engineering practice or if the defect arises from accident or neglect. Other than identified above and subject to R&G not limiting its liability for causing death and personal injury, it shall not be liable for indirect or consequential loss and otherwise its liability shall be limited to the amounts paid by the Buyer for the Products or the fitting or service concerned. These terms do not affect the Buyer's statutory rights.

R&G RACING RETURNS POLICY (NON-FAULTY GOODS)

Returns must be pre-authorized (if not pre-authorized the return will be rejected). Goods may only be returned direct to us if they were purchased direct from us (customer must prove if necessary). Otherwise to be returned to original vendor. Goods must be in re-sellable condition, in the opinion of R&G Racing. All returns are subject to a 25% restocking and handling fee (25% of the gross value exc. P&P – at the prevailing price at time of purchase). The customer must pay any and all carriage charges. No returns of discontinued products, unless within 14 days of purchase. This policy does not affect your statutory rights and does not refer to faulty goods.

R&G

Unit 1, Shelley's Lane, East Worldham, Alton, Hampshire, GU34 3AQ
 Tel: +44 (0)1420 89007 Fax: +44 (0)1420 87301 www.rg-racing.com Email: info@rg-racing.com