



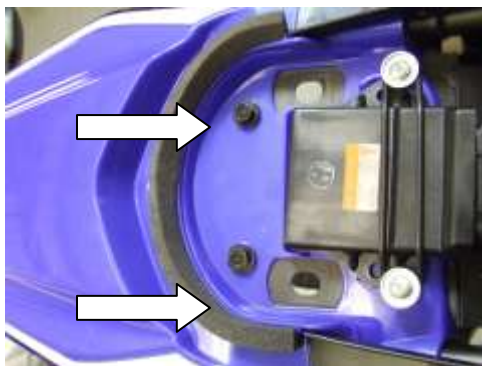
**FITTING INSTRUCTIONS FOR LP0082BK LICENCE PLATE BRACKET
YAMAHA WR250 X 2009 on**



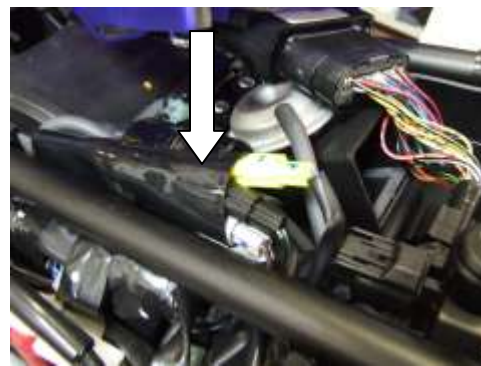
Please note that the way the kit is packed does not necessarily represent the way of mounting to the bike
Please note that in cases where kits are packed with rubber washers holding the components onto the bolt – *the rubber washers should be thrown away!*

PLEASE READ ALL INSTRUCTIONS BEFORE COMMENCING
YOU WILL NEED THE FOLLOWING TOOLS TO COMPLETE THIS JOB

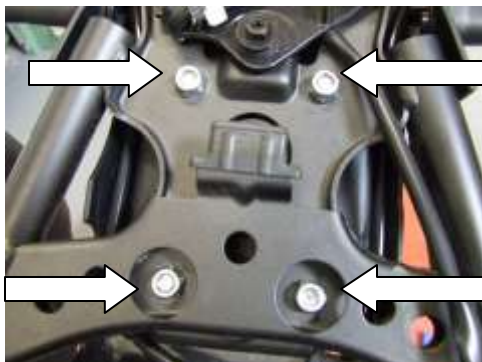
- Socket set to include 6,8 and 10mm sockets.
- Metric allen keys.
- Electrical pliers/crimps.



PICTURE A



PICTURE B



PICTURE C



PICTURE D



- Remove seat (two bolts from underneath).
- Remove both rear side panels (one fairing screw either side).
- Unbolt rear tail top cowling bolts as shown in picture A (there is no need to disconnect wiring loom). Gently lit cowl away from bike and rest where seat unit mounts with out stretching wiring loom.
- Trace wires for both indicators and licence plate light and disconnect wiring plugs (remember routing) as shown in picture B.
- Undo and remove four bolts that hold OEM licence plate bracket (as shown in picture C) while supporting bracket from below and ensuring wiring to indicators and licence plate light is free and clear (you will have to cut several cable ties) .
- Unclip four push-clips (as shown in picture D) and remove OEM licence plate bracket from indicator bracket.
- Fit new licence plate light to new licence plate bracket. We suggest cutting and reusing OEM rear light socket plug (cut approximately 180mm from plug). OEM black wire to new black wire and OEM blue to new red wire.
- Using heat shrink from kit protect new licence plate light wires (position heat shrink up to light end of wires and being careful not to over-heat).
- Clip new licence plate bracket to indicator bracket as original and using
- Using cable clips from kit secure wiring (feed wire through hole in indicator bracket) shown in picture D.
- Offer new assembly up to original mounting position and using new bolts washers and nyloc nuts secure new licence plate bracket to bike.
- Reroute licence plate light and indicator wires as original using cable ties from kit.
- Reconnect the three plugs as original.
- You should check operation of indicators and licence plate light at this stage.
- Refit rear tail top cowling as original.
- Refit both rear side panels as original.
- Refit seat as original.
- Refit licence plate.
- **IMPORTANT: IF FITTING A FULL-SIZE LICENCE PLATE AND PLACING IT FAR DOWN ON THE LICENCE PLATE HANGER, THERE IS A SMALL CHANCE OF THE LICENCE PLATE HITTING THE BACK WHEEL UNDER HEAVY LOAD AND OVER LARGE BUMPS IN THE ROAD. IT IS YOUR RESPONSIBILITY TO CHECK FOR THIS POSSIBILITY AND TAKE AVOIDING ACTION. FAILURE TO CHECK THIS COULD RESULT IN SERIOUS INJURY.**
- Depending on local laws, attach enclosed red reflective tape in an appropriate location.
- Please recheck the indicators and licence plate illuminator before riding.

CONSUMER NOTICE

The catalogue description and any exhibition of samples are only broad indications of the Products and R&G may make design changes which do not diminish their performance or visual appeal and supplying them in such state shall conform to the order. The Buyer acknowledges no representation or warranty (other than as to title) has been given or will apply to the Products other than those in R&G's order or confirmation and the Buyer confirms it has chosen the Products as being of merchantable quality and suitable for its particular purposes. Where R&G fits the Products or undertakes other services it shall exercise reasonable skill and care and rectify any fault free of charge unless the workmanship has been disturbed. The Buyer is responsible for ensuring that the warranty on the motorcycle is not affected by the fitting of the Products. On return of any defective Products R&G shall at its option either supply a replacement or refund the purchase money but shall not be liable if the Products have been modified or used or maintained otherwise than in accordance with R&G's or manufacturer's instructions and good engineering practice or if the defect arises from accident or neglect. Other than identified above and subject to R&G not limiting its liability for causing death and personal injury, it shall not be liable for indirect or consequential loss and otherwise its liability shall be limited to the amounts paid by the Buyer for the Products or the fitting or service concerned. These terms do not affect the Buyer's statutory rights.

R&G RACING RETURNS POLICY (NON-FAULTY GOODS)

Returns must be pre-authorized (if not pre-authorized the return will be rejected). Goods may only be returned direct to us if they were purchased direct from us (customer must prove if necessary). Otherwise to be returned to original vendor. Goods must be in re-sellable condition, in the opinion of R&G Racing. All returns are subject to a 25% restocking and handling fee (25% of the gross value exc. P&P – at the prevailing price at time of purchase). The customer must pay any and all carriage charges. No returns of discontinued products, unless within 14 days of purchase. This policy does not affect your statutory rights and does not refer to faulty goods.

R&G Racing

Unit 1, Shelleys Lane, East Worldham, Alton, Hampshire, GU34 3AQ

Tel: +44 (0) 1420 89007 || Fax : +44 (0) 1420 87301 || Email: info@rg-racing.com