



FITTING INSTRUCTIONS FOR CP0352BL CRASH PROTECTORS
YAMAHA YBR 125

Page | 1



PICTURE A



PICTURE B



REAR OF BIKE

FRONT OF BIKE

PICTURE C

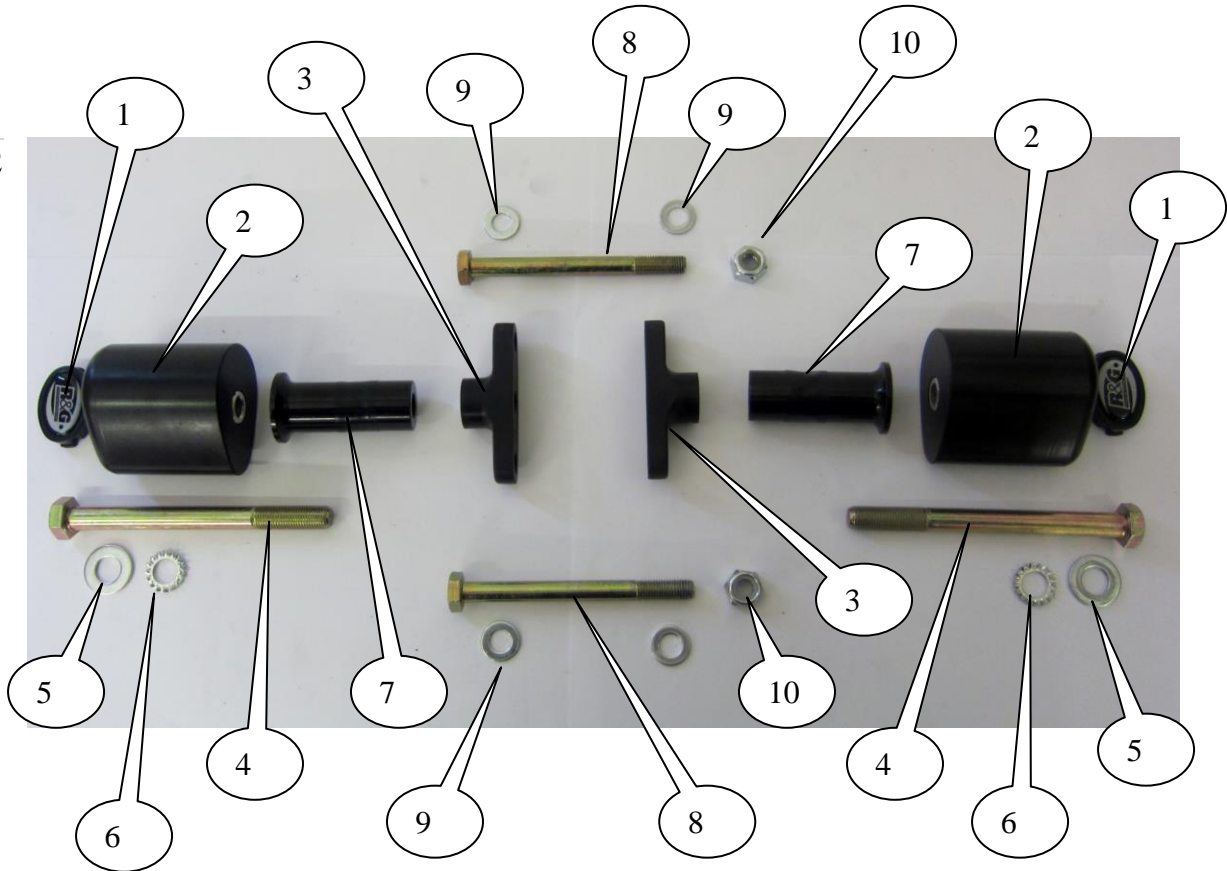
THIS KIT CONTAINS THE ITEMS PICTURED AND LABELLED BELOW.
DO NOT PROCEED UNTIL YOU ARE SURE ALL PARTS ARE PRESENT.

Please note that the way the kit is packed does not necessarily represent the way of mounting to the bike

Please note that in cases where kits are packed with rubber washers holding the components onto the bolt – *the rubber washers should be thrown away!*

THE PARTS SHOWN MAY BE REPRESENTATIVE ONLY (FOR CLARITY OF INSTRUCTIONS ONLY)

R&G Racing
Unit 1, Shelley's Lane, East Worldham, Alton, Hampshire, GU34 3AQ
Tel: +44 (0)1420 89007 Fax: +44 (0)1420 87301 www.rg-racing.com Email: info@rg-racing.com

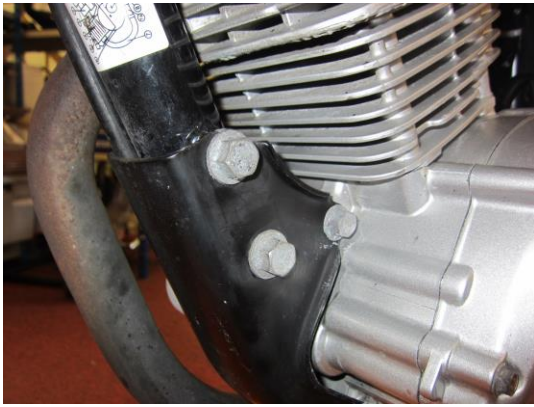


TOOLS REQUIRED

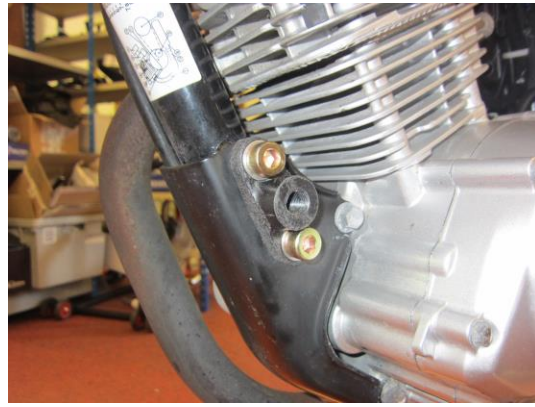
- Socket set to include 14, 17 and 19mm sockets and wrench.
- Torque wrench (up to 40 Nm).

LEGEND

- ITEM 1 = BC0002 CRASH PROTECTOR CAPS (x2).
- ITEM 2 = B0061 with CS340 (12mm) (BOTH CRASH PROTECTORS) (x2).
- ITEM 3 = M0373 METAL MOUNTING BLOCK (x2).
- ITEM 4 = M12x1.25x130mm LONG HEX HEAD BOLTS (L/H & R/H SIDE) (x2).
- ITEM 5 = M12 PLAIN WASHERS (x2).
- ITEM 6 = LW0001 (M12 SHAKE PROOF WASHERS) (x2).
- ITEM 7 = S0503 SPACER (x2).
- ITEM 8 = M10x1.25x100mm LONG CAP HEAD BOLTS (FRAME/ENGINE BOLT) (x2).
- ITEM 9 = M10 PLAIN WASHERS (x4).
- ITEM 10 = M10x1.25 NYLOC NUTS (x2).



PICTURE 1



PICTURE 2



PICTURE 3



PICTURE 4



PICTURE 5



FITTING INSTRUCTIONS

- Remove the upper frame bolt by loosening the nut and sliding the bolt out, as shown in picture 1.
- Slide one of the 10mm washers (item 9) onto the M10 cap head bolt (item 8=100mm long) so washer sits against head of the bolt. Now slide on one of the metal mounting blocks (from the side with the boss protruding outwards) and position the assembly through the upper frame mount hole.
- Now with this supporting the frame mount, remove the lower frame bolt and assemble the second M10 cap head bolt in the same way as the first, before positioning through the metal mounting block (now on the bike) and then through the lower frame mount hole, as shown in picture 2.
- With the exposed threads of both bolts protruding through the other side of the frame, place the second metal mounting block over the bolts, before fitting an M10 washer and nyloc nut to each bolt, as shown in picture 3.
- Tighten the nuts on each bolt (an open ended spanner will need to be used to hold the nuts). Do not exceed 40 Nm of torque.
- Slide one of the 12mm washers (item 5) onto the M12 hexagon headed bolt (item 4=130mm long) so the washer sits against head of the bolt. Now slide on one of the shake proof washers (item 6)
- Place the bolt with washers though crash bobbin (item 2) and through the spacer (item 7) (ensure the widest end sits against the crash bobbin), as shown in picture 4.
- With the thread of the bolt protruding from the spacer, offer the assembly up to the metal mounting block and begin to tighten, as shown in picture 5.
- Repeat the last three steps to fit the crash protector to the opposite side of the bike.
- Finally tighten the crash protector bolts until you feel some compression from inside the protector using 19mm socket and wrench. **PLEASE NOTE THE CRASH PROTECTOR MUST BE POSITIONED AS IN PICTURE 'C' WITH BIGGER END TOWARD FRONT OF BIKE.** Turn a little more so that you feel the compression increase slightly. Then apply a quarter turn. Do not over tighten as damage can occur to the bike. Do not exceed 40 Nm of torque.
- If not already fitted fit bubble sticker into recess of crash protector cap.
- Fit crash protector cap into crash protector.

Issue 1 06/09/2013 (AR)

CONSUMER NOTICE

The catalogue description and any exhibition of samples are only broad indications of the Products and R&G may make design changes which do not diminish their performance or visual appeal and supplying them in such state shall conform to the order. The Buyer acknowledges no representation or warranty (other than as to title) has been given or will apply to the Products other than those in R&G's order or confirmation and the Buyer confirms it has chosen the Products as being of merchantable quality and suitable for its particular purposes. Where R&G fits the Products or undertakes other services it shall exercise reasonable skill and care and rectify any fault free of charge unless the workmanship has been disturbed. The Buyer is responsible for ensuring that the warranty on the motorcycle is not affected by the fitting of the Products. On return of any defective Products R&G shall at its option either supply a replacement or refund the purchase money but shall not be liable if the Products have been modified or used or maintained otherwise than in accordance with R&G's or manufacturer's instructions and good engineering practice or if the defect arises from accident or neglect. Other than identified above and subject to R&G not limiting its liability for causing death and personal injury, it shall not be liable for indirect or consequential loss and otherwise its liability shall be limited to the amounts paid by the Buyer for the Products or the fitting or service concerned. These terms do not affect the Buyer's statutory rights.

R&G RACING RETURNS POLICY (NON-FAULTY GOODS)

Returns must be pre-authorized (if not pre-authorized the return will be rejected). Goods may only be returned direct to us if they were purchased direct from us (customer must prove if necessary). Otherwise to be returned to original vendor. Goods must be in resellable condition, in the opinion of R&G Racing. All returns are subject to a 25% restocking and handling fee (25% of the gross value exc. P&P – at the prevailing price at time of purchase). The customer must pay any and all carriage charges. No returns of discontinued products, unless within 14 days of purchase. This policy does not affect your statutory rights and does not refer to faulty goods.

R&G Racing

Unit 1, Shelley's Lane, East Worldham, Alton, Hampshire, GU34 3AQ

Tel: +44 (0)1420 89007 Fax: +44 (0)1420 87301 www.rg-racing.com Email: info@rg-racing.com



**Instructions de montage CP0352BL Protections crash
YAMAHA YBR 125**

Page | 5



PHOTO A



PHOTO B



REAR OF BIKE

FRONT OF BIKE

PHOTO C

ARRIERE MOTO

AVANT MOTO

PHOTO 'C'

LE KIT CONTIENT LES ARTICLES EXPOSES CI-DESSOUS, VERIFIER QUE TOUTES LES PIECES SOIENT PRESENTES AVANT DE PROCEDER AU MONTAGE.

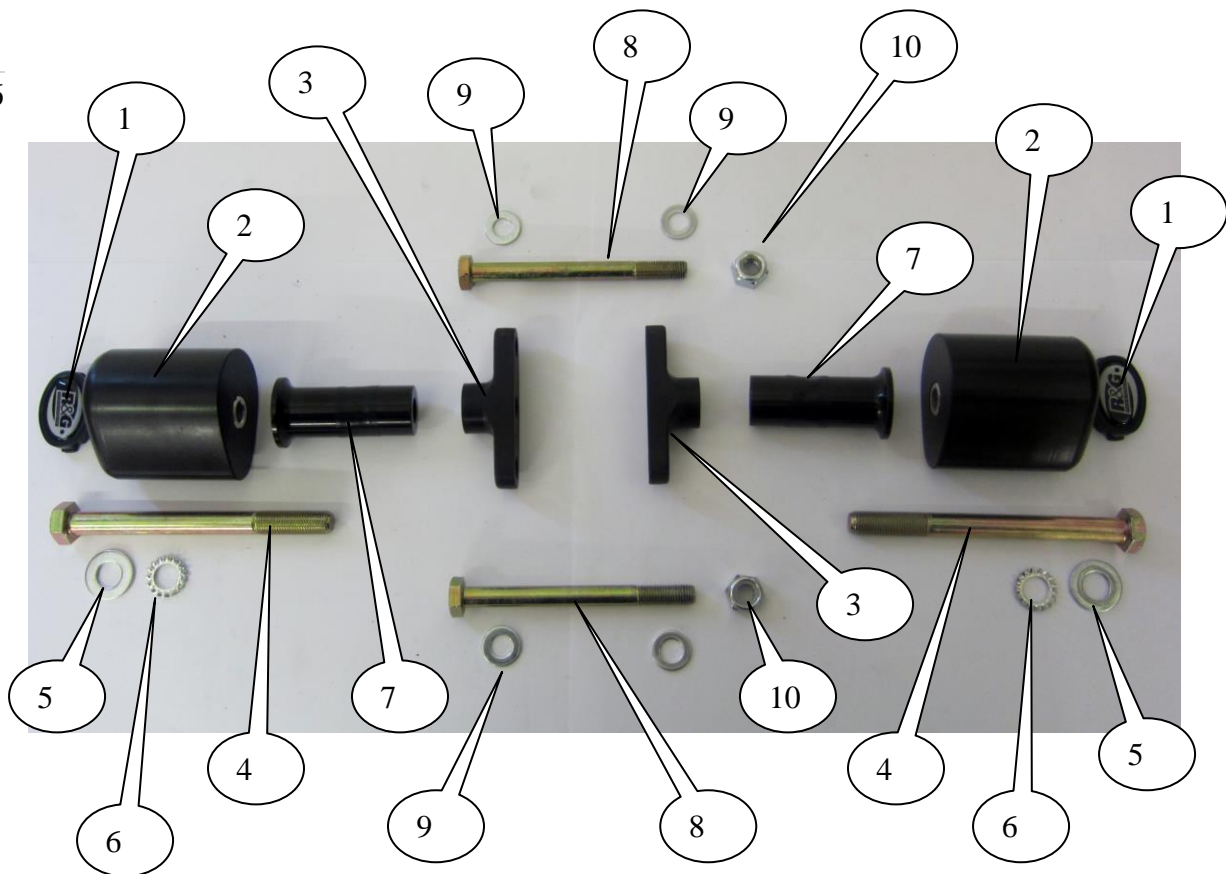
LA FAÇON DONT LE KIT EST EMBALLE NE CORRESPOND PAS FORCEMENT A LA FAÇON DE MONTER LES PIECES SUR LA MOTO.

Notez que si les kits sont emballés avec des rondelles en caoutchouc servant à tenir les composants, *ces rondelles doivent être jetées.*



LES PIÈCES PRÉSENTÉES PEUVENT N'ÊTRE QUE REPRÉSENTATIVES, AFIN DE FACILITER ET CLARIFIER LES INSTRUCTIONS DE MONTAGE.

Page | 6



Outils requis

- Jeu de clés 14, 17 et 19mm
- Clé dynamométrique (à 40Nm).

LEGENDE

- ARTICLE 1 = BC0002 Capuchons de protection (x2).
 ARTICLE 2 = B0061 avec CS340 (12mm) (Les 2 protections crash) (x2).
 ARTICLE 3 = M0373 Bloc de montage en métal (x2).
 ARTICLE 4 = M12x1.25x130mm Boulons (Coté gauche et droit) (x2).
 ARTICLE 5 = M12 Rondelles (x2).
 ARTICLE 6 = LW0001 (M12 Rondelles anti vibration) (x2).
 ARTICLE 7 = S0503 Entretoise (x2).
 ARTICLE 8 = M10x1.25x100mm Boulons (Cadre / Boulon moteur) (x2).
 ARTICLE 9 = M10 Rondelles (x4).
 ARTICLE 10 = M10x1.25 Ecrous Nyloc (x2).

R&G Racing

Unit 1, Shelley's Lane, East Worldham, Alton, Hampshire, GU34 3AQ

Tel: +44 (0)1420 89007 Fax: +44 (0)1420 87301 www.rg-racing.com Email: info@rg-racing.com

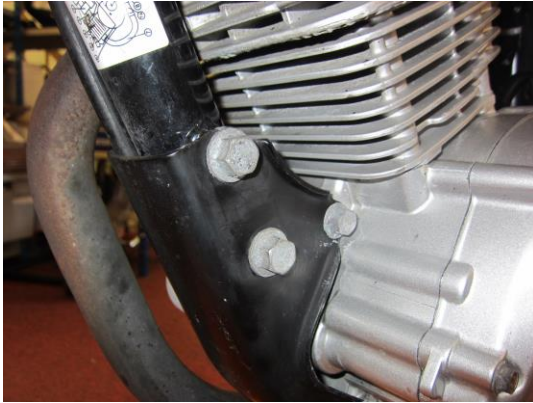


PHOTO 1

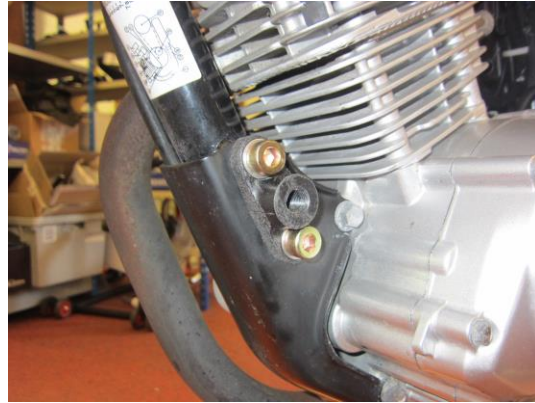


PHOTO 2



PHOTO 3



PHOTO 4



PHOTO 5



Instructions de montage:

- Enlever le boulon cadre supérieur en desserrant l'écrou et en glissant le boulon (Photo 1).
- Glisser une des rondelles M10 (ARTICLE 9) sur le boulon M10 (ARTICLE 8=100mm de long) de façon à ce que la rondelle aille contre la tête du boulon. Glissez le maintenant dans un des blocs de métal (depuis le côté où le patron dépasse vers l'extérieur) et positionnez l'ensemble à travers le trou du support cadre supérieur.
- Enlever le boulon de cadre inférieur et assemblez le second boulon M10 de la même façon que le 1er, avant de le positionner à travers le bloc de fixation métal (sur la moto) puis à travers le trou de fixation du cadre inférieur (Photo 2).
- Avec les filetages exposés des 2 boulons qui dépassent de l'autre côté du cadre, placez le second bloc de montage en métal sur les boulons, avant de passer une rondelle M10 et un écrou Nyloc sur chaque boulon (Photo 3).
- Serrer les écrous sur chaque boulon (Vous devrez utiliser une clé pour tenir les écrous). Pas plus de 40 Nm de couple.
- Glisser une des rondelles M12 (ARTICLE 5) sur le boulon M12 (ARTICLE 4=130mm de long) de façon à ce que la rondelle se place contre la tête du boulon. Glisser une des rondelles anti vibration (ARTICLE 6).
- Placer le boulon avec rondelles dans la bobine (ARTICLE 2) et dans l'entretoise (ARTICLE 7) (veiller à ce que la partie la plus large se place contre la bobine (Photo 4).
- Avec le filetage du boulon dépassant de l'entretoise, poser l'ensemble sur le bloc de montage commencez à serrer (Photo 5).
- Répéter les 3 dernières étapes pour installer la protection crash du côté opposé de la moto.
- Serrer le boulon avec une clé de 19mm jusqu'à ce que vous sentiez une légère compression de l'intérieur de la protection. **LA PROTECTION DOIT ETRE POSITIONNEE COMME EN "C" AVEC LE COTE ARRONDI LE PLUS GROS EN DIRECTION DE L'AVANT DE LA MOTO.** Tourner un peu plus afin d'accentuer légèrement la compression. Appliquer un quart de tour. Ne pas trop serrer, au risque d'abîmer la moto. Pas plus de 40 Nm de couple.
- Mettre le capuchon de la protection crash.

Issue 1 06/09/2013 (AR)