



**FITTING INSTRUCTIONS FOR LP0262BK LICENCE PLATE BRACKET**  
**KAWASAKI NINJA ZX6R 2019-**



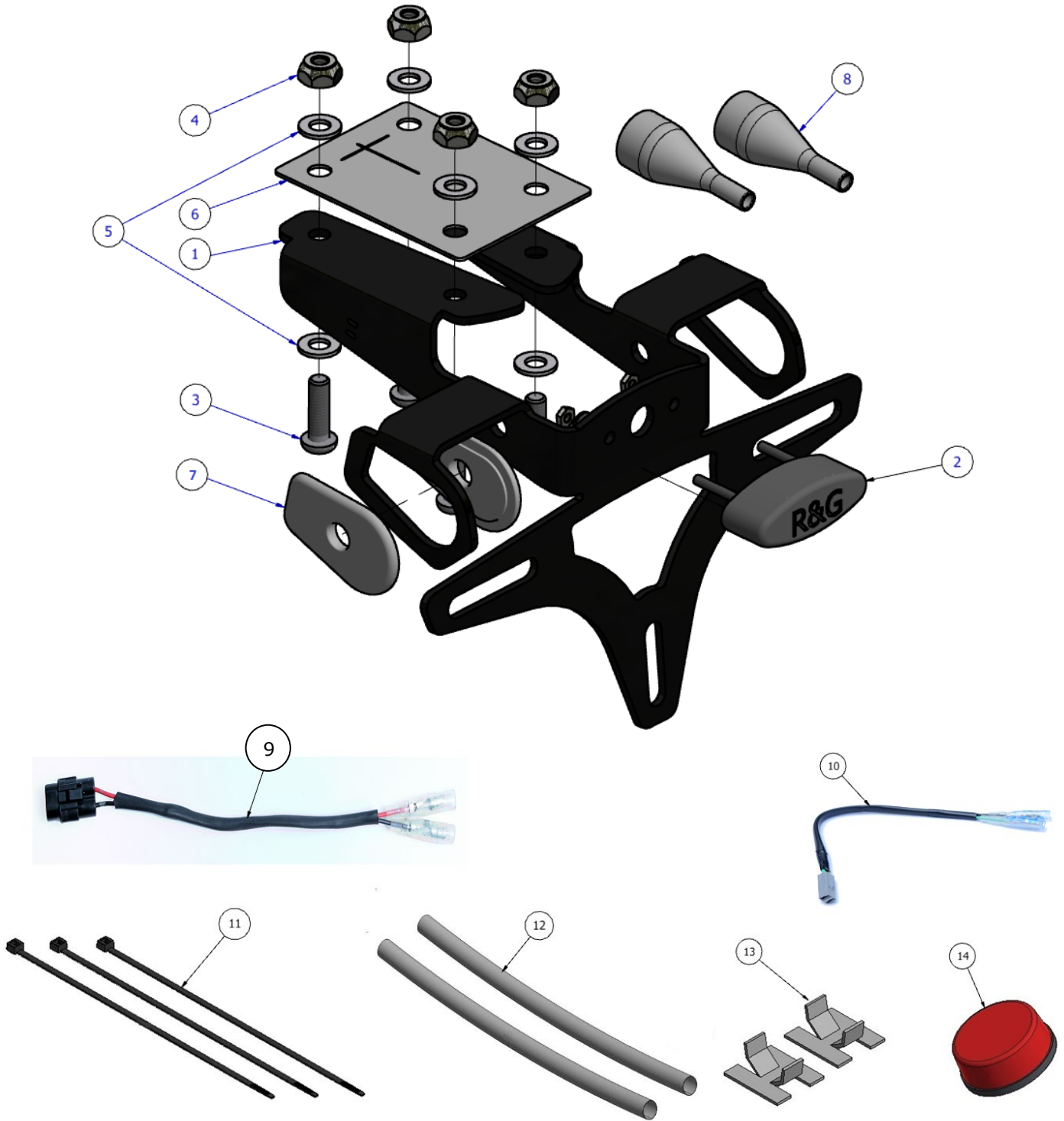
**THIS KIT CONTAINS THE ITEMS PICTURED AND LABELLED BELOW.**  
**DO NOT PROCEED UNTIL YOU ARE SURE ALL PARTS ARE PRESENT.**

**Please note that the way the kit is packed does not necessarily represent the way of mounting to the bike.**

**THE PARTS SHOWN MAY BE REPRESENTATIVE ONLY (FOR CLARITY OF INSTRUCTIONS ONLY).**

**Please note that in cases where kits are packed with rubber washers holding the components onto the bolt – *the rubber washers should be thrown away!***

**Digital copies of these instructions are available to download from [www.rg-racing.com](http://www.rg-racing.com)**





### LEGEND

ITEM 1 = TB0262 LICENCE PLATE MOUNTING BRACKET  
ITEM 2 = LA0002 No PLATE LIGHT ASSEMBLY (INCLUDING SHROUD)  
ITEM 3 = M6x1x20mm LONG BUTTON HEAD BOLTS (4)  
ITEM 4 = M6 NYLOC NUTS (4)  
ITEM 5 = M6 WASHERS 14mm O/DIA (8)  
ITEM 6 = RG28 RUBBER GASKET  
ITEM 7 = I0039 INDICATOR ADAPTORS (4)  
ITEM 8 = IWC0002 MINI INDICATOR WIRING COVERS (2)  
ITEM 9 = No PLATE LIGHT CONNECTOR - CON0051  
ITEM 10 = MINI INDICATOR CONNECTORS - CON0032 (2)  
ITEM 11 = 2.5mm CABLE TIES x 100mm LONG (4)  
ITEM 12 = 150mm length of heat-shrink (3)  
ITEM 13 = Self-adhesive cable clips (3)  
ITEM 14 = REFLECTOR

### **TOOLS REQUIRED**

- Set of metric Allen keys to include 4mm and 5 mm.
  - Phillips head screwdriver.
- Socket set to include 6mm, 10mm and A-F sockets and wrench.
  - Small amount of adhesive

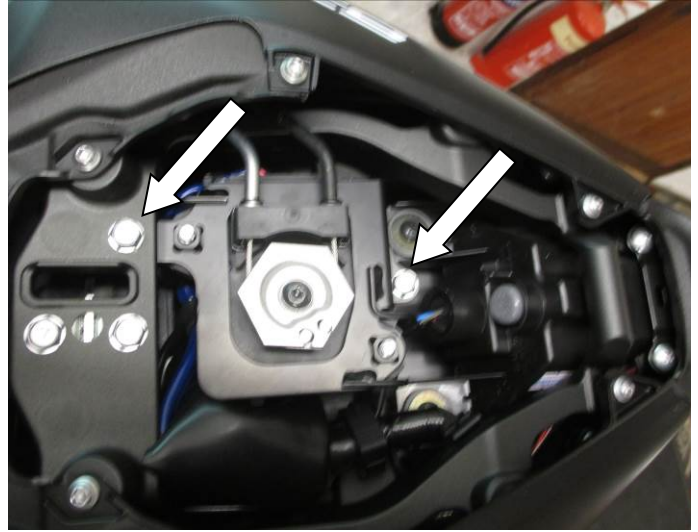
### **MAXIMUM TORQUE SETTINGS**

- M4 BOLT = 8Nm
- M5 BOLT = 12Nm
- M6 BOLT = 15Nm
- M8 BOLT = 20Nm
- M10 BOLT = 40Nm

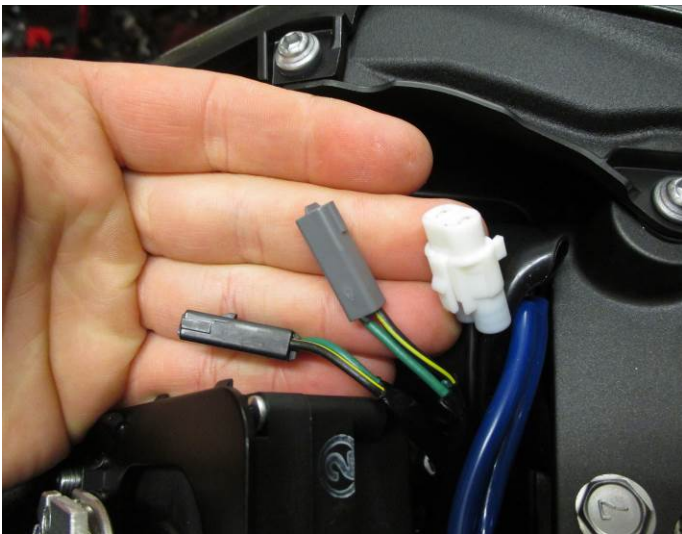
R&G



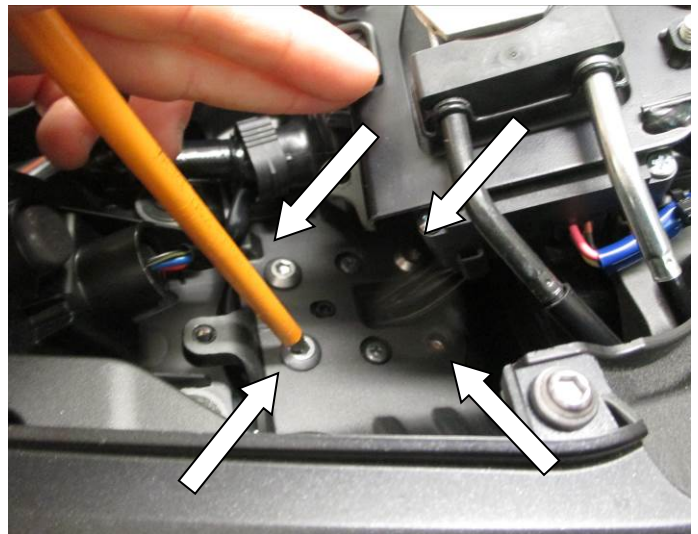
Picture 1



Picture 2

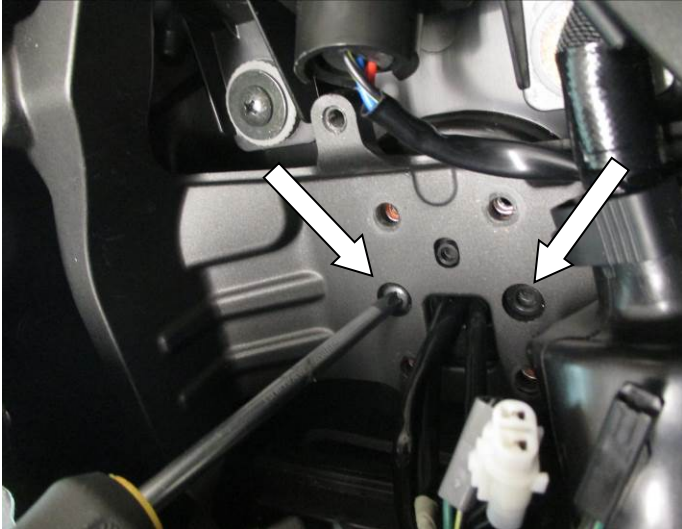


Picture 3



Picture 4





Picture 5



Picture 6



Picture 7



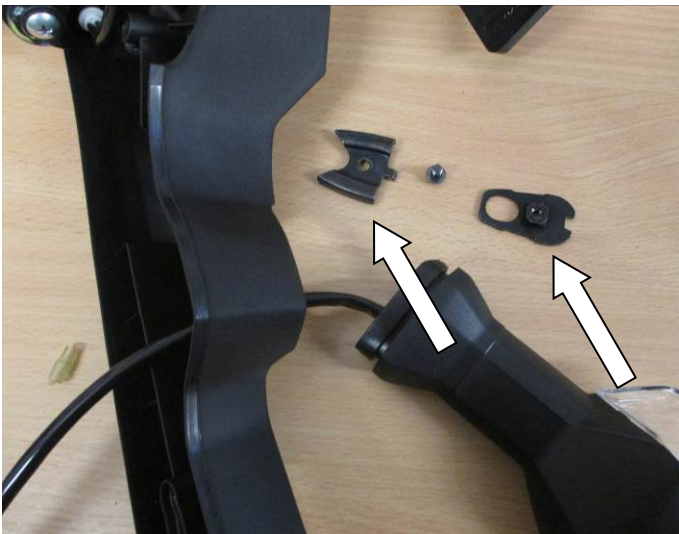
Picture 8



Picture 9



Picture 10



Picture 11



Picture 12





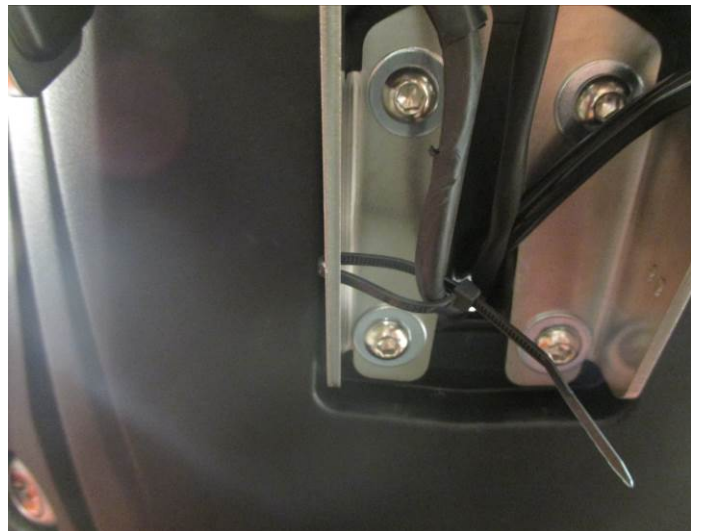
Picture 13



Picture 14



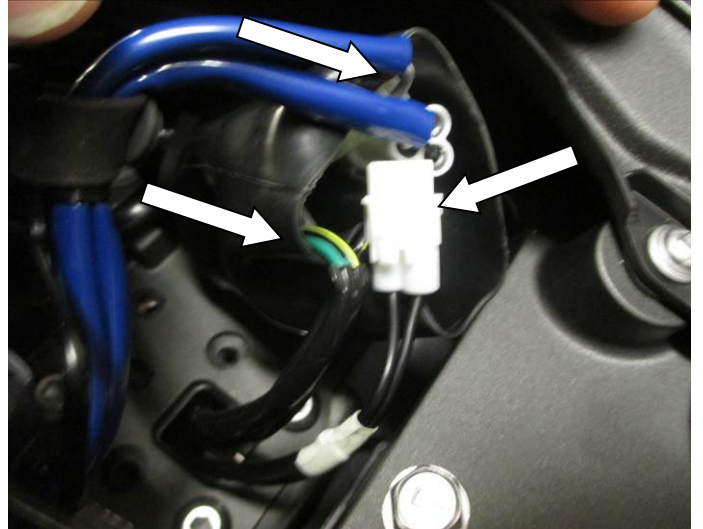
Picture 15



Picture 16



Picture 17



Picture 18







### **FITTING INSTRUCTIONS**

- Remove both seats, using the lock under the tail for the rider seat. Then use the release cable found under the front seat to detach rear pillion seat as in picture 1.
- Remove the two hex bolts arrowed in picture 2 to move the seat lock mechanism from its mount, carefully move this aside to access the bolts underneath.
- You will find three wires protruding through the base of the tail unit underneath the lock mechanism just moved, trace these wires and disconnect them at the connector as shown in picture 3, note the indicator wires are colour coded.
- To remove the OEM licence plate bracket unit, use a 5mm allen key to remove the 4 bolts arrowed in picture 4
- While supporting the tail unit from underneath, remove the remaining two phillips head screws shown in picture 5.
- Carefully lower the OEM licence plate bracket away from the bike, making sure to carefully guide the indicator and number plate light wires through the hole in the tail unit as shown in picture 6, taking note of the wiring route.

### **If re-using the OEM indicators**

- You will need to disassemble the OEM licence plate bracket in order to remove the indicators, begin by removing the two screws on the left side of the unit as arrowed in picture 7.
- Next using a 10mm socket remove the hex nut on the rear of the reflector as shown in picture 8.
- Carefully split the tail unit down the middle as shown in picture 9, careful not to damage any locking tabs that may be holding the unit together.
- To remove each indicator, a cover plate should be removed with a phillips screw driver as shown in picture 10.
- You can now remove the outer and inner plate from the indicator rubber as shown in picture 11.
- Carefully remove the OEM indicator (making sure any plates, washers, and plastic inserts are put to one side for later use) by gently pulling it out of the licence plate mount. Take note of which indicator belongs on each side of the bike.
- The indicators can now be assembled to their corresponding mounting points on the tail bracket (item 1) in the same way they were removed using the inner plates (See picture 12). Note, a small amount of washing up liquid may be used to aid in fitting the rubber to the tail bracket.

### **If using R&G Mini indicators**

- NOTE: 1 x set of RGR0002 resistors (available separately) may be required to achieve the correct flash rate.
- Put the tail unit to one side and make sure it is stored safely so the bike can be returned to standard if desired.

R&G

Unit 1, Shelley's Lane, East Worldham, Alton, Hampshire, GU34 3AQ  
Tel: +44 (0)1420 89007 Fax: +44 (0)1420 87301 [www.rg-racing.com](http://www.rg-racing.com) Email: [info@rg-racing.com](mailto:info@rg-racing.com)



- Fit one length of heat shrink (Item 12) over each pair of indicator wires and heat with a hot air gun or hair dryer to neatly hold and protect the wires.
- The indicators should be mounted to the tail tidy using two indicator adapter plates (item 7) as shown in the assembly diagram (on page 2) and picture 13, to do this thread the first indicator adapter (item 7) onto the mini indicator and through the tail bracket (item 1).
- Sandwich the tail bracket with another indicator adapter, ensuring both raised faces sit into the bracket mount, and secure in place using the locking nut provided with the indicator. Do NOT overtighten.
- At this point you can slide an indicator wiring cover (item 8) over each indicator wire as arrowed in picture 13 and feed the bullet connectors and wires through the hole in the tail bracket.
- Finally attach one Mini indicator connector (item 10) to the bullet connectors of the indicators using the colours labelled below:
  - *Black -> Black*
  - *Yellow -> Green*

#### Licence plate illuminator

- Once indicators are fitted, the licence plate illuminator (item 2) can be assembled and fitted to the Tail bracket (item 1)
- The shroud provided should be fixed to the light using a small amount of superglue as shown in picture 14, the purpose of this is to direct the light onto the plate once fitted.
- Fit one length of heat shrink (Item 12) over the red and black wires and heat gently with a hot air gun or hairdryer to neatly hold and protect the wires.
- Thread the wires through the centre hole in the tail bracket (item 1) and thread through the mounting holes and affix using the washers and nuts provided with the light with a 6mm socket, as shown in picture 15
- Finally attach the number plate light connector (item 9) to the number plate light bullet connectors, matching the colours as mentioned below:
  - *Black -> Black*
  - *Red -> Red*
- With the tail unit now assembled you can now attach the assembly to your motorcycle. Do this by offering up the assembly into the recess left by the OEM tail unit, making sure to sandwich the RG28 rubber gasket (item 6) between the bracket and tail unit.
- Using your 4mm allen key and the four M6 x 20mm bolts (item 3) with one M6 washer (item 5) each, push this through the mounting hole and through the tail unit of the bike
- Secure these with another M6 washer (item 5) and M6 Nyloc nut (item 4) per bolt using your 10mm socket as shown in the assembly diagram (page 2) and pictures 16 & 17. Tighten these to the correct torque, do NOT overtighten as this could cause damage to the bike.
- At this stage you should use the cable ties provided (item 11) to neaten neatly fix these 3 wires to the tail unit using the small holes in the sides, as seen in picture 16. It is advised you leave these loose at this stage to aid in cable routing.

R&G

Unit 1, Shelley's Lane, East Worldham, Alton, Hampshire, GU34 3AQ

Tel: +44 (0)1420 89007 Fax: +44 (0)1420 87301 [www.rg-racing.com](http://www.rg-racing.com) Email: [info@rg-racing.com](mailto:info@rg-racing.com)



- Now the bracket should be securely affixed to the tail unit, feed the three wires from the indicators and licence plate illuminator through the rubber gasket and into the bike as noted in picture 17.
- After re-routing the wires as they were originally removed, re-connect the indicators and number plate light to the original connectors on the main wiring loom. Ensuring the correct indicator is connected to the corresponding side as in picture 18.
- At this point, turn on the ignition and check all lights function correctly, if lights fail to illuminate, check connections. If indicators do not illuminate, swap the bullet connectors round.
- Tighten any loose cable ties at this point so the wiring is neat and hidden from sight. You may wish to use the self-adhesive cable clips (item 13) to aid this.
- Check all bolts and screws are tightened to the correct torque.
- Reassemble the seat lock unit and both seats in the same way as they were removed.
- Mount the licence plate (it may require drilling) to the rear of the bracket low enough so that it does not cover the indicators.
- **IMPORTANT: IF FITTING A FULL-SIZE LICENCE PLATE AND PLACING IT FAR DOWN ON THE LICENCE PLATE HANGER, THERE IS A SMALL CHANCE OF THE LICENCE PLATE HITTING THE BACK WHEEL UNDER HEAVY LOAD AND OVER LARGE BUMPS IN THE ROAD. IT IS YOUR RESPONSIBILITY TO CHECK FOR THIS POSSIBILITY AND TAKE AVOIDING ACTION. FAILURE TO CHECK THIS COULD RESULT IN SERIOUS INJURY.**
- Depending on local laws, attach enclosed reflector (item 14) in an appropriate location
- Retest the licence plate illuminator and all lights before riding.

ISSUE 1 14/02/19 (DM)

#### CONSUMER NOTICE

The catalogue description and any exhibition of samples are only broad indications of the Products and R&G may make design changes which do not diminish their performance or visual appeal and supplying them in such state shall conform to the order. The Buyer acknowledges no representation or warranty (other than as to title) has been given or will apply to the Products other than those in R&G's order or confirmation and the Buyer confirms it has chosen the Products as being of merchantable quality and suitable for its particular purposes. Where R&G fits the Products or undertakes other services it shall exercise reasonable skill and care and rectify any fault free of charge unless the workmanship has been disturbed. The Buyer is responsible for ensuring that the warranty on the motorcycle is not affected by the fitting of the Products. On return of any defective Products R&G shall at its option either supply a replacement or refund the purchase money but shall not be liable if the Products have been modified or used or maintained otherwise than in accordance with R&G's or manufacturer's instructions and good engineering practice or if the defect arises from accident or neglect. Other than identified above and subject to R&G not limiting its liability for causing death and personal injury, it shall not be liable for indirect or consequential loss and otherwise its liability shall be limited to the amounts paid by the Buyer for the Products or the fitting or service concerned. These terms do not affect the Buyer's statutory rights.

#### R&G RETURNS POLICY (NON-FAULTY GOODS)

Returns must be pre-authorized (if not pre-authorized the return will be rejected). Goods may only be returned direct to us if they were purchased direct from us (customer must prove if necessary). Otherwise to be returned to original vendor. Goods must be in re-sellable condition, in the opinion of R&G. All returns are subject to a 25% restocking and handling fee (25% of the gross value exc. P&P – at the prevailing price at time of purchase). The customer must pay any and all carriage charges. No returns of discontinued products, unless within 14 days of purchase. This policy does not affect your statutory rights and does not refer to faulty goods.

R&G

Unit 1, Shelley's Lane, East Worldham, Alton, Hampshire, GU34 3AQ

Tel: +44 (0)1420 89007 Fax: +44 (0)1420 87301 [www.rg-racing.com](http://www.rg-racing.com) Email: [info@rg-racing.com](mailto:info@rg-racing.com)