



IR0003

FITTING INSTRUCTIONS FOR IR0003BK INDICATOR RELOCATOR
DUCATI SCRAMBLER FLAT TRACK PRO 2016-

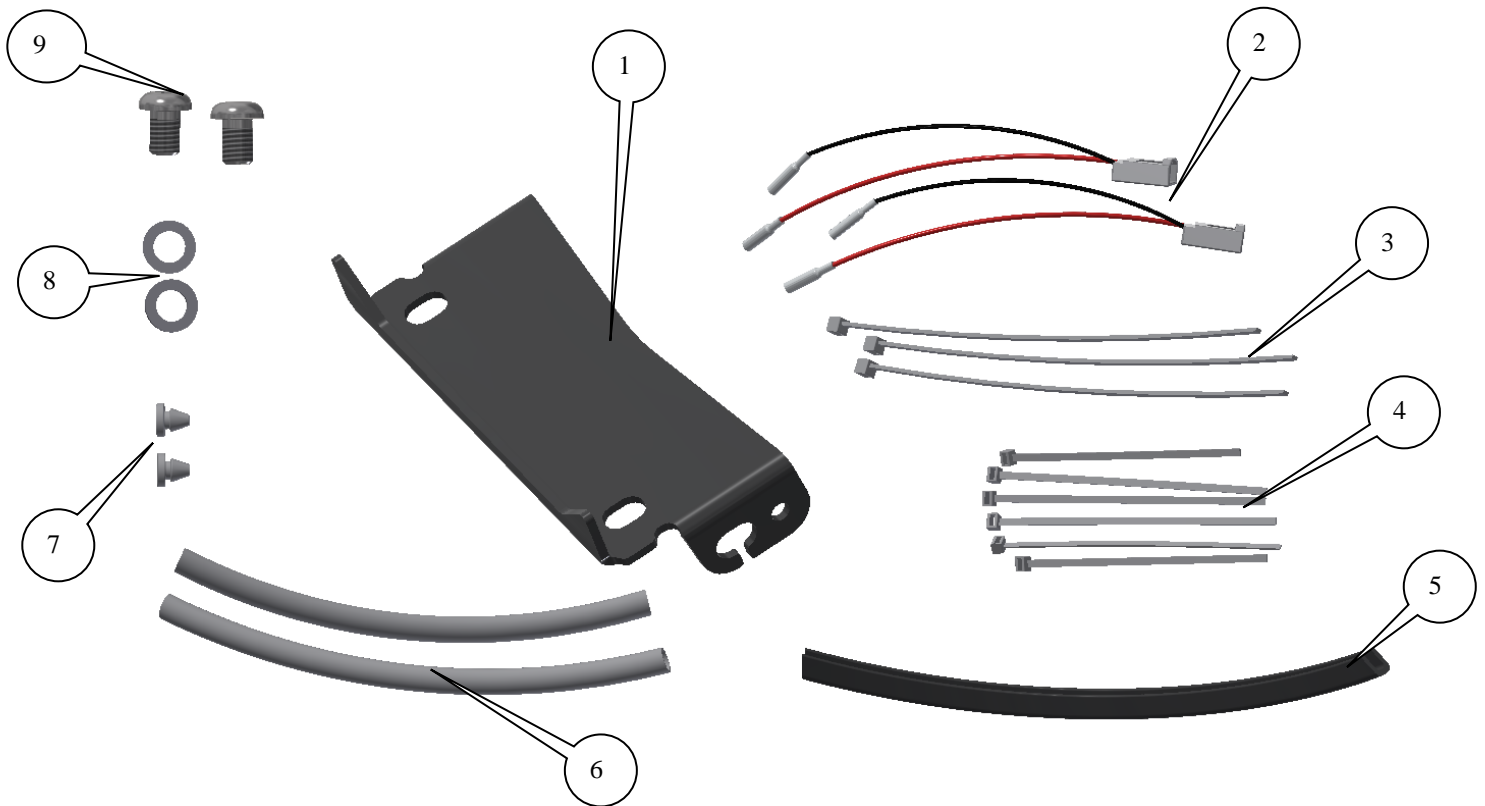
Page | 1



THIS KIT CONTAINS THE ITEMS PICTURED AND LABELLED BELOW.
DO NOT PROCEED UNTIL YOU ARE SURE ALL PARTS ARE PRESENT.

Please note that the way the kit is packed does not necessarily represent the way of mounting to the bike

THE PARTS SHOWN MAY BE REPRESENTATIVE ONLY (FOR CLARITY OF INSTRUCTIONS ONLY)





IR0003

LEGEND

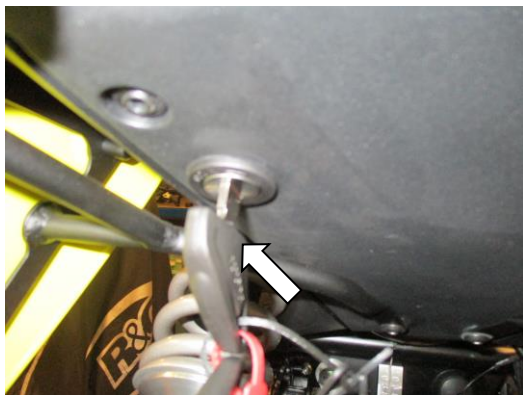
- ITEM 1 = INDICATOR RELOCATION BRACKET (SMW0073) (x1).
- ITEM 2 = MINI INDICATOR CONNECTOR (CON0015) (x1).
- ITEM 3 = LARGE CABLE TIES (x3).
- ITEM 4 = SMALL CABLE TIES (x6).
- ITEM 5 = 200mm BLACK RUBBER EDGING (SRS004) (x1).
- ITEM 6 = 150mm LENGTH OF HEAT SHRINK (x2).
- ITEM 7 = M5x12mm BUTTON HEAD BOLT (x1).
- ITEM 8 = RUBBER GROMMETS (RB50-20-00FG) (x2).
- ITEM 9 = M8x12mm BUTTON HEAD BOLTS (x2).

Page | 2

Please note that in cases where kits are packed with rubber washers holding the components onto the bolt – *the rubber washers should be thrown away!*

TOOLS REQUIRED

- Set of Metric Allen keys to include 5 and 6mm A/F.
 - T10 & T40 Keys or Socket bits.
 - 12 & 13mm spanners.



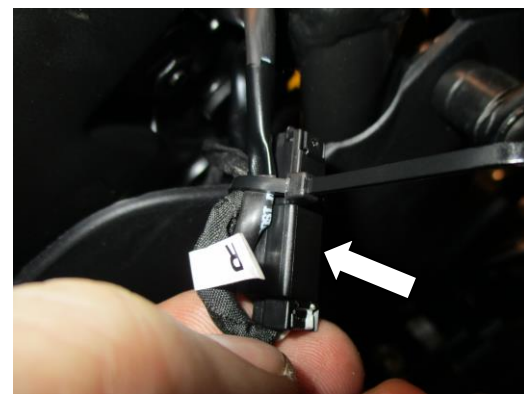
PICTURE 1



PICTURE 2



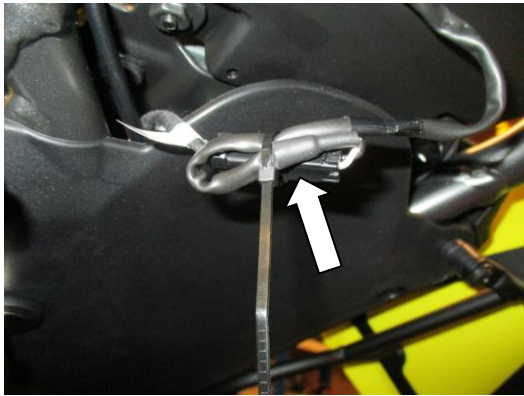
PICTURE 3



PICTURE 4



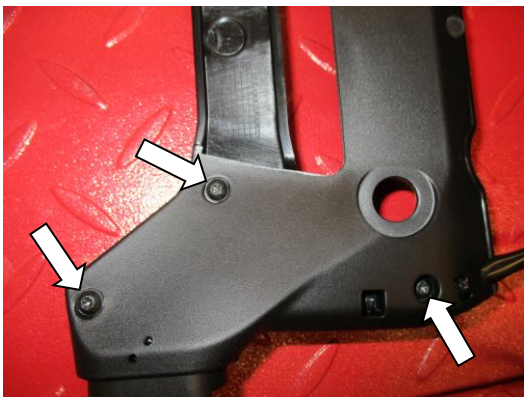
IR0003



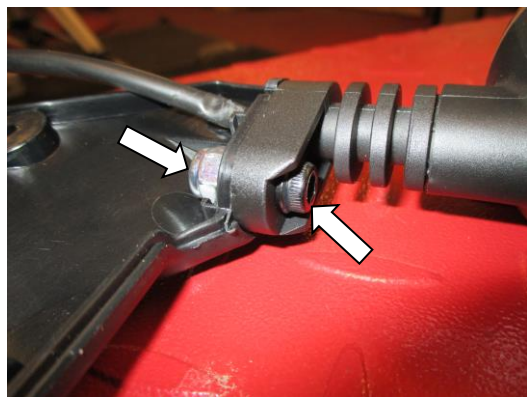
PICTURE 5



PICTURE 6



PICTURE 7



PICTURE 8



PICTURE 9



PICTURE 10

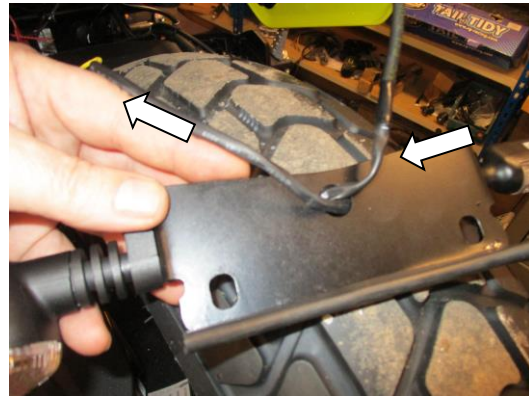


IR0003

Page | 4



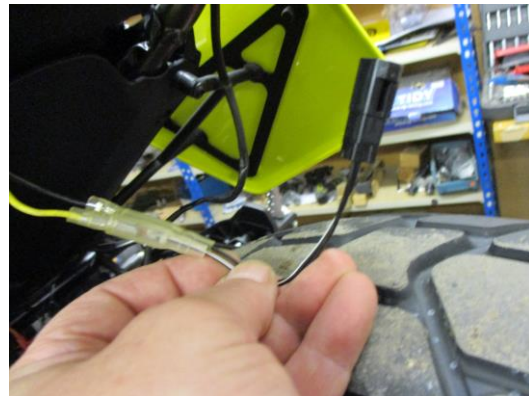
PICTURE 11



PICTURE 12



PICTURE 13



PICTURE 14

FITTING INSTRUCTIONS

- Remove the seat using the key as shown in picture 1.
- Remove the waterproof cover as shown in picture 2.
- Remove the two bolts arrowed in picture 3.
- Follow the original indicator wiring and cut the cable ties to allow removal.
- Disconnect the wiring plug sockets as arrowed in pictures 4 and 5.
- Carefully remove the original indicator assembly.

If reusing the original indicators

- Remove the six screws arrowed in pictures 6 and 7.
- Split the housing to allow access to the indicator wiring and cut the cable ties securing the wiring.
- Remove the nut and bolt shown in picture 8 and remove the indicator.
- Repeat the above steps and remove the opposite indicator.
- Fit the original indicators to the indicator relocation bracket (item 1) as shown in picture 9 and secure using the original nuts and bolts.

If using the mini indicators

- Fit the indicators of choice (R&G mini indicator product code RG370 for bulb type and RG371 for LED type or RG372 for Aero Style led type) as shown in picture 10 (please use the supplied heat-shrink (item 6) to protect the wiring).

R&G Racing

Unit 1, Shelley's Lane, East Worldham, Alton, Hampshire, GU34 3AQ

Tel: +44 (0)1420 89007 Fax: +44 (0)1420 87301 www.rg-racing.com Email: info@rg-racing.com



IR0003

Page | 5

- Cut and fit the black rubber edging (item 5) to the indicator relocation bracket as shown in picture 11 (a small amount of adhesive may be required to hold in position).
- Feed the wires through the hole in item 1 as shown in picture 12.
- While feeding the wires through the rear sub-frame as original offer the assembly into position and secure using the bolts and washers (items 8 and 9) supplied.
- Use the supplied connectors (item 2) to connect the mini indicators to the original wiring plug sockets (it is good idea to test the operation of the indicators at this stage, if operation fails please swap the wires over).
- Use the supplied cable ties to secure the wiring as original.
- Refit the splash proof cover and seat as original.
- **Please test the indicators before riding.**

Digital copies of these instructions are available to download from www.rg-racing.com

GENERAL TORQUE SETTINGS

M4 BOLT = 8Nm
M5 BOLT = 12Nm
M6 BOLT = 15Nm
M8 BOLT = 20Nm
M10 BOLT = 40Nm

ISSUE 1 10/02/2017 (NSY)

CONSUMER NOTICE

The catalogue description and any exhibition of samples are only broad indications of the Products and R&G may make design changes which do not diminish their performance or visual appeal and supplying them in such state shall conform to the order. The Buyer acknowledges no representation or warranty (other than as to title) has been given or will apply to the Products other than those in R&G's order or confirmation and the Buyer confirms it has chosen the Products as being of merchantable quality and suitable for its particular purposes. Where R&G fits the Products or undertakes other services it shall exercise reasonable skill and care and rectify any fault free of charge unless the workmanship has been disturbed. The Buyer is responsible for ensuring that the warranty on the motorcycle is not affected by the fitting of the Products. On return of any defective Products R&G shall at its option either supply a replacement or refund the purchase money but shall not be liable if the Products have been modified or used or maintained otherwise than in accordance with R&G's or manufacturer's instructions and good engineering practice or if the defect arises from accident or neglect. Other than identified above and subject to R&G not limiting its liability for causing death and personal injury, it shall not be liable for indirect or consequential loss and otherwise its liability shall be limited to the amounts paid by the Buyer for the Products or the fitting or service concerned. These terms do not affect the Buyer's statutory rights.

R&G RACING RETURNS POLICY (NON-FAULTY GOODS)

Returns must be pre-authorized (if not pre-authorized the return will be rejected). Goods may only be returned direct to us if they were purchased direct from us (customer must prove if necessary). Otherwise to be returned to original vendor. Goods must be in re-sellable condition, in the opinion of R&G Racing. All returns are subject to a 25% restocking and handling fee (25% of the gross value exc. P&P – at the prevailing price at time of purchase). The customer must pay any and all carriage charges. No returns of discontinued products, unless within 14 days of purchase. This policy does not affect your statutory rights and does not refer to faulty goods.

R&G Racing
Unit 1, Shelley's Lane, East Worldham, Alton, Hampshire, GU34 3AQ
Tel: +44 (0)1420 89007 Fax: +44 (0)1420 87301 www.rg-racing.com Email: info@rg-racing.com



IR0003

NOTICE DE MONTAGE POUR IR0003BK
RELOCALISATEUR DE CLIGNOTANT
DUCATI SCRAMBLER FLAT TRACK PRO 2016-

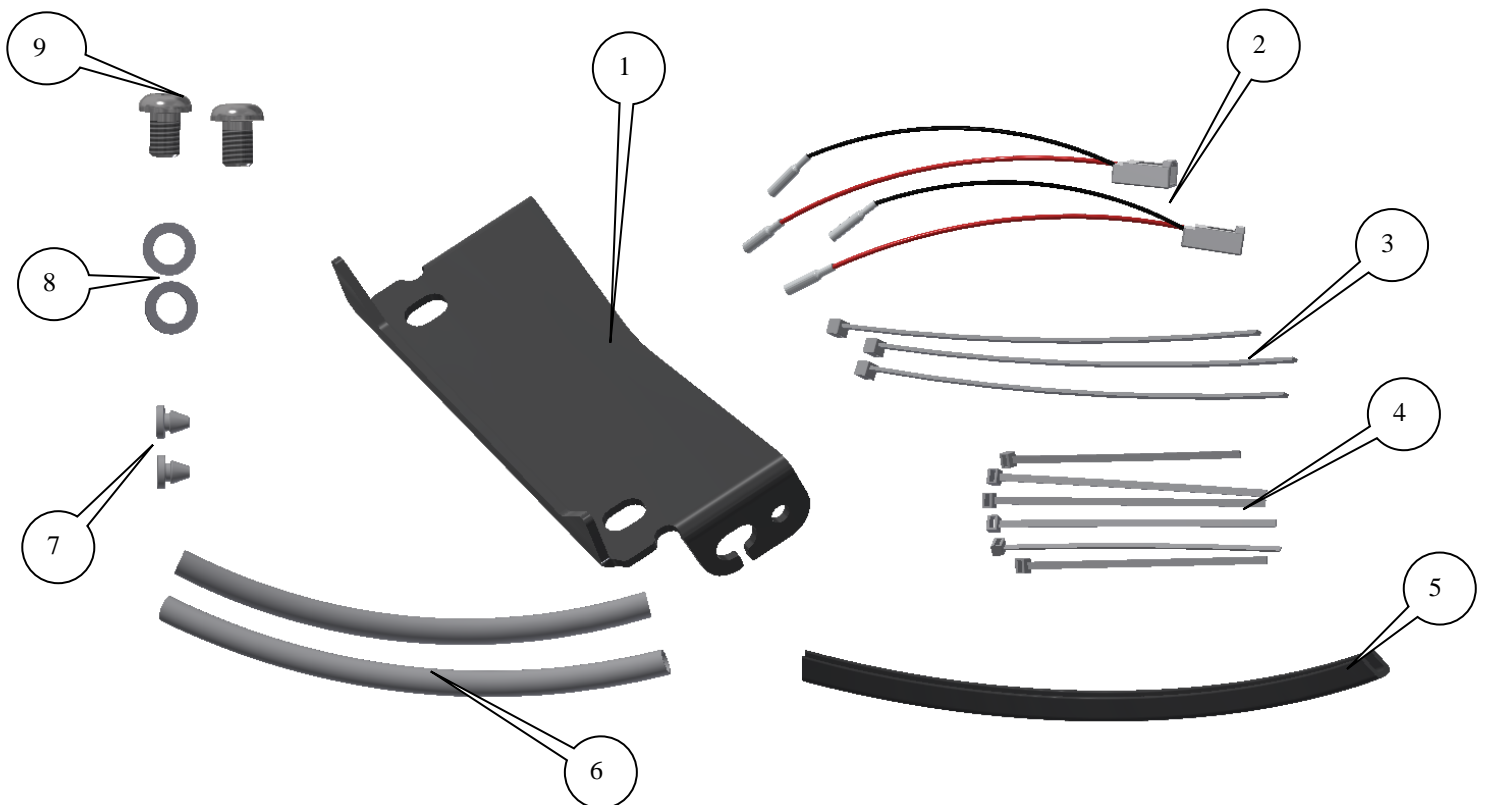
Page | 6



LE KIT CONTIENT LES ARTICLES EXPOSES CI-DESSOUS, VERIFIER QUE TOUTES LES PIECES SOIENT PRESENTES AVANT DE PROCEDER AU MONTAGE.

LA FACON DONT LE KIT EST EMBALLE NE CORRESPOND PAS FORCEMENT A LA FACON DE MONTER LES PIECES SUR LA MOTO.

LES PARTIES PRESENTEES PEUVENT ETRE UNIQUEMENT REPRESENTATIVES (POUR LA CLARTE DES INSTRUCTIONS UNIQUEMENT)





IR0003

LEGENDE

ARTICLE 1 = SUPPORT DE RELOCALISATION DE CLIGNOTANT (SMW0073) (x1).

ARTICLE 2 = CONNECTEUR DE MINI CLIGNOTANT (CON0015) (x1).

Page | 7

ARTICLE 3 = COLLIERS DE SERRAGE (x3).

ARTICLE 4 = PETITS COLLIERS (x6).

ARTICLE 5 = 200mm BORDS EN CAOUTCHOUC (SRS004) (x1).

ARTICLE 6 = 150mm BANDEAU THERMO RETRACTABLE (x2).

ARTICLE 7 = M5x12mm BOULON (x1).

ARTICLE 8 = OEILLETTS EN CAOUTCHOUC (RB50-20-00FG) (x2).

ARTICLE 9 = M8x12mm BOULONS (x2).

Notez que si les kits sont emballés avec des rondelles en caoutchouc servant à tenir les composants, *ces rondelles doivent être jetées!*

OUTILS REQUIS

- Jeu de clés Allen 5 et 6mm.
 - Clés T10 & T40
- Clés à molette 12 & 13mm.

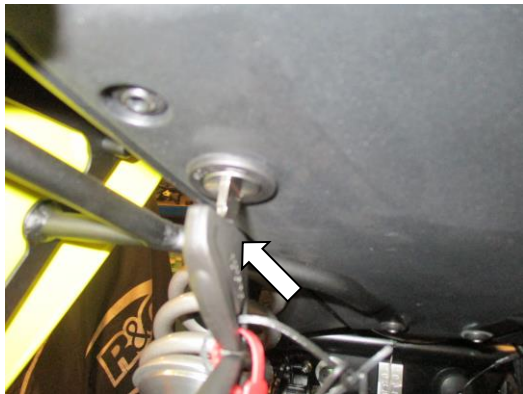


PHOTO 1



PHOTO 2



PHOTO 3

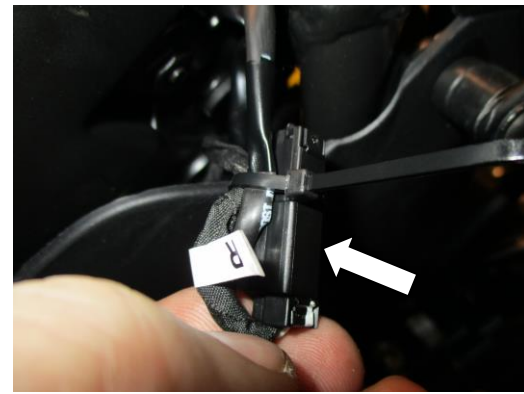


PHOTO 4



IR0003

Page | 8



PHOTO 5

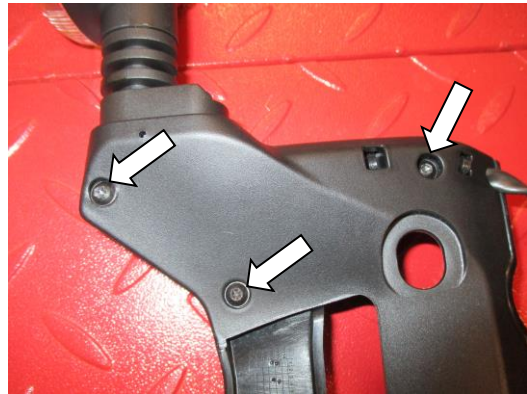


PHOTO 6

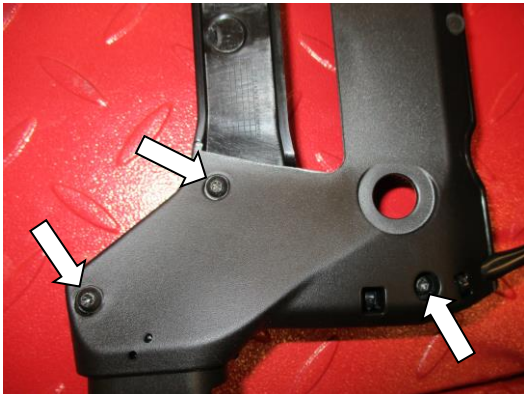


PHOTO 7

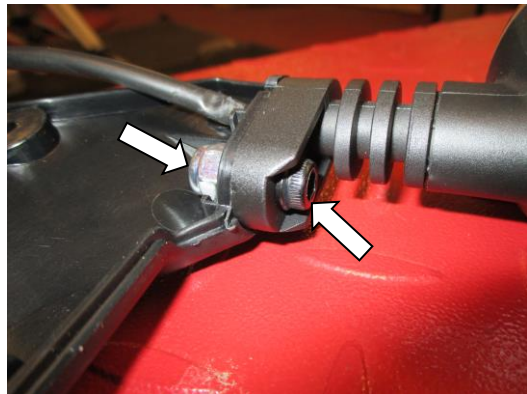


PHOTO 8



PHOTO 9



PHOTO 10

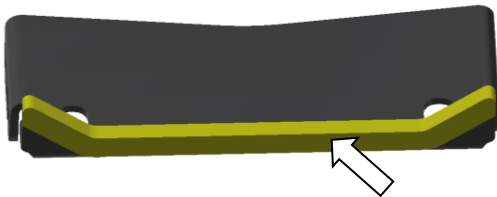


PHOTO 11

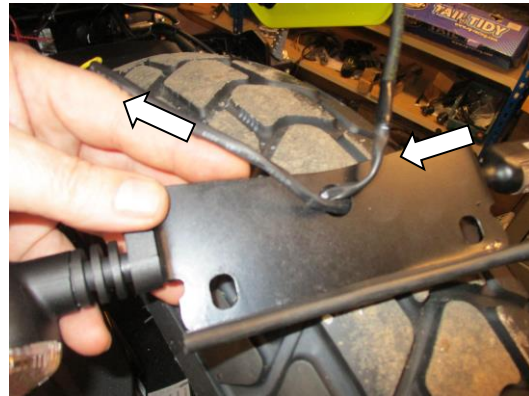


PHOTO 12



PHOTO 13

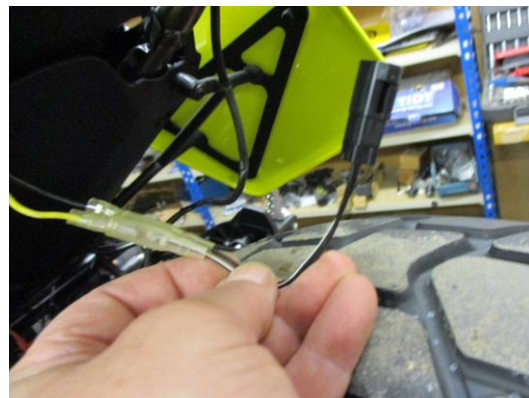


PHOTO 14

NOTICE DE MONTAGE

- Enlever le siège à l'aide de la clé, voir photo 1.
- Enlever le cache étanche, voir photo 2.
- Enlever les 2 boulons, voir photo 3.
- Suivre le fil de clignotant d'origine puis couper les colliers de serrage.
- Déconnecter les prises de fils, voir photos 4 et 5.
- Enlever l'assemblage de clignotant d'origine.

Si vous réutilisez les clignotants d'origine :

- Enlever les 6 vis indiquées sur les photos 6 et 7.
- Diviser le boîtier pour accéder au fil de clignotant puis couper les colliers de serrage qui sécurisent les fils.
- Enlever l'écrou et le boulon, voir photo 8 et enlever le clignotant.
- Répéter les étapes du dessus puis enlever le clignotant opposé.
- Monter les clignotants d'origine sur le support de relocalisation de clignotant (article 1) voir photo 9 puis fixer à l'aide des écrous et boulons d'origine.



IR0003

Si vous montez les mini clignotants

- Monter les clignotants de votre choix (Mini clignotants R&G code RG370 pour type ampoule et RG371 pour type LED ou RG372 pour type LED latérales) voir photo 10 (svp, utilisez le manchon thermo rétractable fourni (article 6) pour protéger les fils).
- Couper et monter le bord en caoutchouc noir (article 5) sur le support de relocalisation de clignotant, voir photo 11 (un peu d'adhésif peut être nécessaire pour fixer la position).
- Passer les fils dans le trou, article 1 voir photo 12.
- Tout en passant les fils dans le sous-cadre arrière comme à l'origine, monter l'assemblage en position puis fixer à l'aide des boulons et rondelles (articles 8 et 9) fournis.
- Utiliser les connecteurs fournis (article 2) pour connecter les mini clignotants aux prises d'origine (Il est judicieux de tester le fonctionnement des clignotants à ce stade. Si l'éclairage échoue, tournez les connecteurs).
- Utiliser les colliers de serrage fournis pour fixer les fils comme à l'origine.
- Remonter le cache anti-éclaboussures et le siège comme à l'origine.
- **Svp, testez les clignotants avant de prendre la route.**

Page | 10

Notice disponible au téléchargement sur www.rg-racing.com

COUPLES DE SERRAGE RECOMMANDES

M4 BOULON = 8Nm
M5 BOULON = 12Nm
M6 BOULON = 15Nm
M8 BOULON = 20Nm
M10 BOULON = 40Nm

ISSUE 1 10/02/2017 (NSY)

CONSUMER NOTICE

The catalogue description and any exhibition of samples are only broad indications of the Products and R&G may make design changes which do not diminish their performance or visual appeal and supplying them in such state shall conform to the order. The Buyer acknowledges no representation or warranty (other than as to title) has been given or will apply to the Products other than those in R&G's order or confirmation and the Buyer confirms it has chosen the Products as being of merchantable quality and suitable for its particular purposes. Where R&G fits the Products or undertakes other services it shall exercise reasonable skill and care and rectify any fault free of charge unless the workmanship has been disturbed. The Buyer is responsible for ensuring that the warranty on the motorcycle is not affected by the fitting of the Products. On return of any defective Products R&G shall at its option either supply a replacement or refund the purchase money but shall not be liable if the Products have been modified or used or maintained otherwise than in accordance with R&G's or manufacturer's instructions and good engineering practice or if the defect arises from accident or neglect. Other than identified above and subject to R&G not limiting its liability for causing death and personal injury, it shall not be liable for indirect or consequential loss and otherwise its liability shall be limited to the amounts paid by the Buyer for the Products or the fitting or service concerned. These terms do not affect the Buyer's statutory rights.

R&G RACING RETURNS POLICY (NON-FAULTY GOODS)

Returns must be pre-authorized (if not pre-authorized the return will be rejected). Goods may only be returned direct to us if they were purchased direct from us (customer must prove if necessary). Otherwise to be returned to original vendor. Goods must be in re-sellable condition, in the opinion of R&G Racing. All returns are subject to a 25% restocking and handling fee (25% of the gross value exc. P&P – at the prevailing price at time of purchase). The customer must pay any and all carriage charges. No returns of discontinued products, unless within 14 days of purchase. This policy does not affect your statutory rights and does not refer to faulty goods.

R&G Racing
Unit 1, Shelley's Lane, East Worldham, Alton, Hampshire, GU34 3AQ
Tel: +44 (0)1420 89007 Fax: +44 (0)1420 87301 www.rg-racing.com Email: info@rg-racing.com