



FITTING INSTRUCTIONS FOR DG0015 DOWNPIPE GRILLE
HONDA CBR 500 R 2013-2015

Page | 1



THIS KIT CONTAINS THE ITEMS PICTURED AND LABELLED BELOW.
DO NOT PROCEED UNTIL YOU ARE SURE ALL PARTS ARE PRESENT.

Please note that the way the kit is packed does not necessarily represent the way of mounting to the bike

Please note that in cases where kits are packed with rubber washers holding the components onto the bolt – *the rubber washers should be thrown away!*

THE PARTS SHOWN MAY BE REPRESENTATIVE ONLY (FOR CLARITY OF INSTRUCTIONS ONLY)

TOOLS REQUIRED

- Socket set to include a 10 and 12mm A/F socket and wrench.
 - Set of metric Allen keys to include 4 and 5mm A/F.
 - Phillips driver.

In This Kit There Should Be

- 1x Downpipe Grille (DG0015BK)
- 2x M6 x 35mm Long Button Head Bolts
 - 2x M6 Nyloc nuts



PICTURE 1



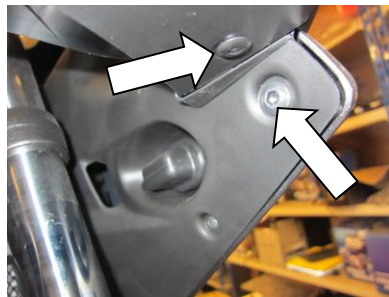
PICTURE 2



PICTURE 3



PICTURE 4



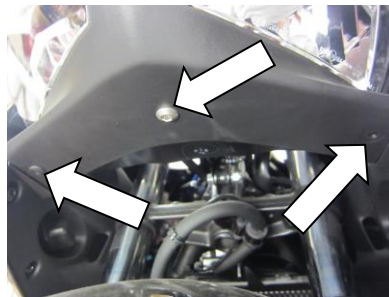
PICTURE 5



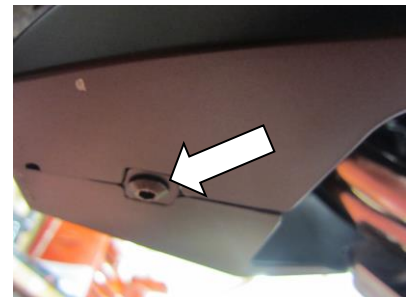
PICTURE 6



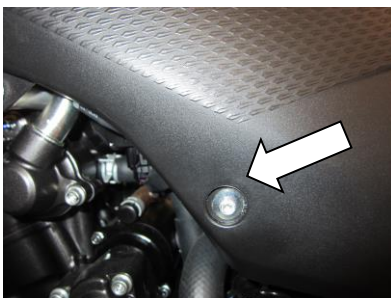
PICTURE 7



PICTURE 8



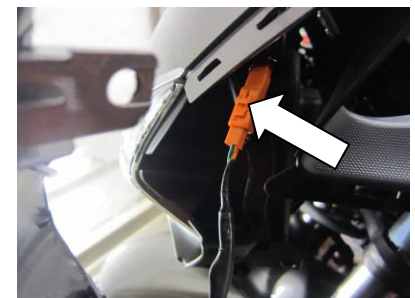
PICTURE 9



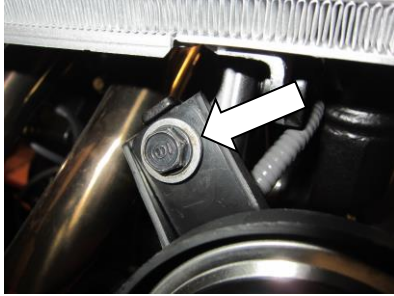
PICTURE 10



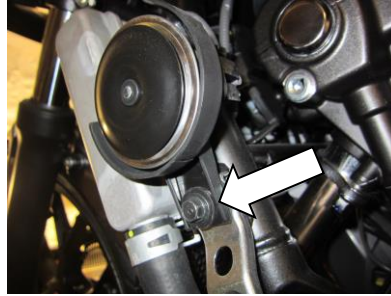
PICTURE 11



PICTURE 12



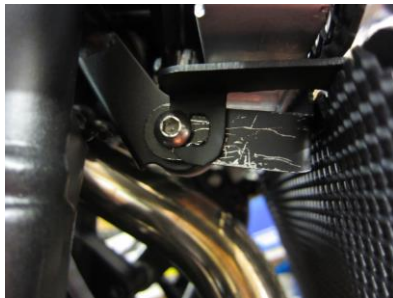
PICTURE 13



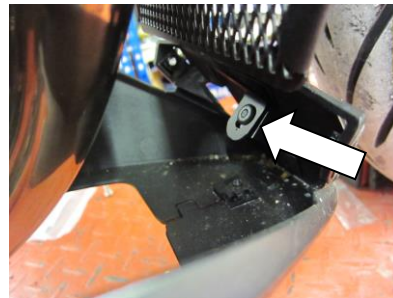
PICTURE 14



PICTURE 15



PICTURE 16

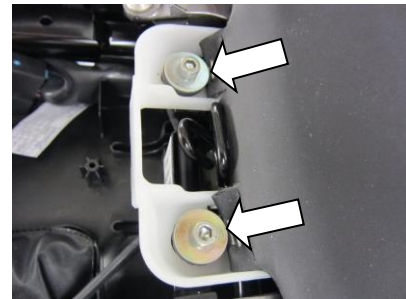


PICTURE 17

FITTING INSTRUCTIONS

Near side (left side as you sit on bike)

- Remove the pillion seat using the key.
- Remove the two bolts arrowed and remove the rider's seat.



- Remove all the bolts and push rivets arrowed in pictures 1 to 10.
- Remove the side panel (just below seat/tank) to allow access to remove the bolt arrowed in picture 11.
- Unclip and loosen the left hand side fairing.
- Disconnect the indicator plug socket arrowed in picture 12 and remove the side fairing.
- Remove the bolt arrowed in picture 13 to allow removal of the horn.
- Remove the bolt arrowed in picture 14 and reposition horn as shown in picture 14.
- Use the original cable tidy to secure wiring as shown in picture 15.
- Remove the push rivet arrowed in picture 17.
- Offer the downpipe grille into position and secure both the top mounting brackets as shown in picture 16 using the bolts and nuts provided.
- Refit the push rivet through the lower mounting bracket of the downpipe grille and secure as original (shown in picture 17).
- Tighten all bolts.
- Reconnect the indicator.
- Refit the side panel and fairing as original.



Issue 1 12/04/2013 (NSY)

CONSUMER NOTICE

The catalogue description and any exhibition of samples are only broad indications of the Products and R&G may make design changes which do not diminish their performance or visual appeal and supplying them in such state shall conform to the order. The Buyer acknowledges no representation or warranty (other than as to title) has been given or will apply to the Products other than those in R&G's order or confirmation and the Buyer confirms it has chosen the Products as being of merchantable quality and suitable for its particular purposes. Where R&G fits the Products or undertakes other services it shall exercise reasonable skill and care and rectify any fault free of charge unless the workmanship has been disturbed. The Buyer is responsible for ensuring that the warranty on the motorcycle is not affected by the fitting of the Products. On return of any defective Products R&G shall at its option either supply a replacement or refund the purchase money but shall not be liable if the Products have been modified or used or maintained otherwise than in accordance with R&G's or manufacturer's instructions and good engineering practice or if the defect arises from accident or neglect. Other than identified above and subject to R&G not limiting its liability for causing death and personal injury, it shall not be liable for indirect or consequential loss and otherwise its liability shall be limited to the amounts paid by the Buyer for the Products or the fitting or service concerned. These terms do not affect the Buyer's statutory rights.

R&G RACING RETURNS POLICY (NON-FAULTY GOODS)

Returns must be pre-authorized (if not pre-authorized the return will be rejected). Goods may only be returned direct to us if they were purchased direct from us (customer must prove if necessary). Otherwise to be returned to original vendor. Goods must be in re-sellable condition, in the opinion of R&G Racing. All returns are subject to a 25% restocking and handling fee (25% of the gross value exc. P&P – at the prevailing price at time of purchase). The customer must pay any and all carriage charges. No returns of discontinued products, unless within 14 days of purchase. This policy does not affect your statutory rights and does not refer to faulty goods.



Instructions de montage DG0016BK Grille protection tuyaux
HONDA CBR 500 R 2013-2015

Page | 5



Le kit contient les articles exposés ci-dessous, vérifier que toutes les pièces soient présentes avant de procéder au montage.

La façon dont le kit est emballé ne correspond pas forcément à la façon de monter les pièces sur la moto.

Les pièces présentées peuvent n'être que représentatives, afin de faciliter et clarifier les instructions de montage.

Notez que si les kits sont emballés avec des rondelles en caoutchouc servant à tenir les composants, *ces rondelles doivent être jetées.*

Outils requis

- Jeu de clé de 10 et 12mm et douille.
 - Clé Allen 4 et 5mm
 - Tournevis cruciforme

Le kit doit contenir :

- 1x Grille de protection (DG0015BK)
 - 2x M6 x 35mm Boulons
 - 2x M6 Ecrous Nyloc



PHOTO 1



PHOTO 2



PHOTO 3



PHOTO 4

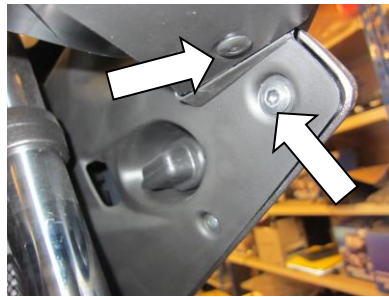


PHOTO 5



PHOTO 6



PHOTO 7

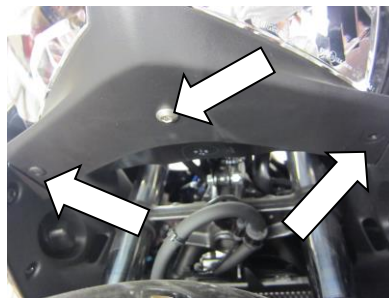


PHOTO 8

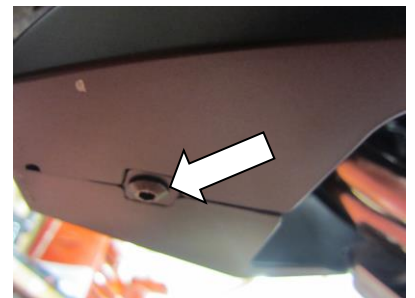


PHOTO 9

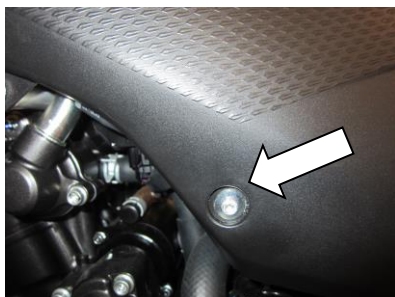


PHOTO 10



PHOTO 11

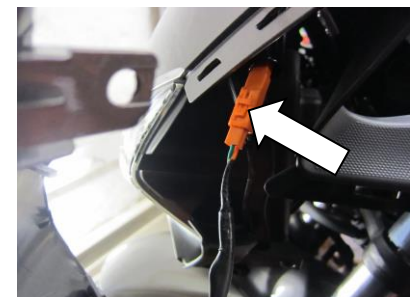


PHOTO 12

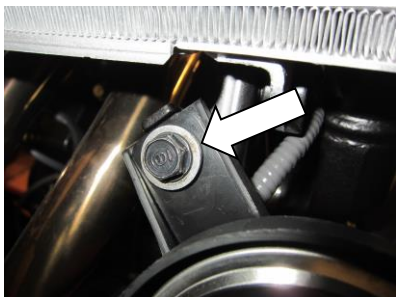


PHOTO 13

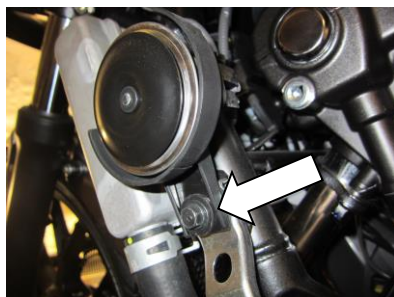


PHOTO 14



PHOTO 15



PHOTO 16

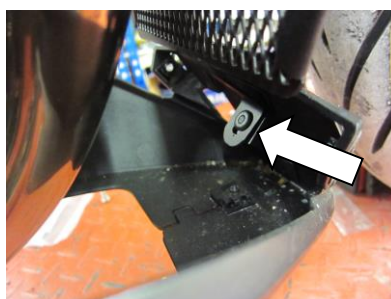
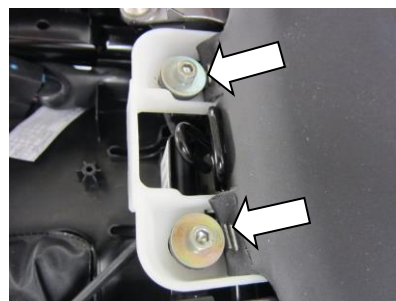


PHOTO 17

Instructions de montage

Coté gauche assis sur la moto

- Enlever le siège passager à l'aide d'une clé.
- Enlever les 2 boulons fléchés puis enlever le siège du pilote.
- Enlever tous les boulons puis pousser les rivets fléchés en photos 1 à 10.
- Enlever le panneau latéral (juste en dessous du siège/réservoir) pour permettre l'accès nécessaire pour enlever le boulon fléché en photo 11.
- Déclipser puis relâcher le carénage coté gauche.
- Déconnecter la prise de clignotants fléchée en photo 12 et enlever le carénage latéral.
- Enlever le boulon fléché en photo 13 pour pouvoir enlever la corne.
- Enlever le boulon fléché en photo 14 et repositionner la corne (photo 14).
- Utiliser le serre câble d'origine pour grouper les fils (Photo 15).
- Enlever le rivet poussoir fléché en photo 17.
- Mettre la grille de protection en position puis fixer les 2 supports supérieurs (Photo 16). En utilisant les boulons et écrous fournis.
- Remettre le rivet poussoir à travers le support de fixation inférieur de la grille de protection et fixez-la comme à l'origine (Photo 17).
- Serrer tous les boulons.
- Reconnecter les clignotants.
- Remettre le panneau latéral et le carénage comme à l'origine.





CONSUMER NOTICE

The catalogue description and any exhibition of samples are only broad indications of the Products and R&G may make design changes which do not diminish their performance or visual appeal and supplying them in such state shall conform to the order. The Buyer acknowledges no representation or warranty (other than as to title) has been given or will apply to the Products other than those in R&G's order or confirmation and the Buyer confirms it has chosen the Products as being of merchantable quality and suitable for its particular purposes. Where R&G fits the Products or undertakes other services it shall exercise reasonable skill and care and rectify any fault free of charge unless the workmanship has been disturbed. The Buyer is responsible for ensuring that the warranty on the motorcycle is not affected by the fitting of the Products. On return of any defective Products R&G shall at its option either supply a replacement or refund the purchase money but shall not be liable if the Products have been modified or used or maintained otherwise than in accordance with R&G's or manufacturer's instructions and good engineering practice or if the defect arises from accident or neglect. Other than identified above and subject to R&G not limiting its liability for causing death and personal injury, it shall not be liable for indirect or consequential loss and otherwise its liability shall be limited to the amounts paid by the Buyer for the Products or the fitting or service concerned. These terms do not affect the Buyer's statutory rights.

Page | 8

R&G RACING RETURNS POLICY (NON-FAULTY GOODS)

Returns must be pre-authorized (if not pre-authorized the return will be rejected). Goods may only be returned direct to us if they were purchased direct from us (customer must prove if necessary). Otherwise to be returned to original vendor. Goods must be in re-sellable condition, in the opinion of R&G Racing. All returns are subject to a 25% restocking and handling fee (25% of the gross value exc. P&P – at the prevailing price at time of purchase). The customer must pay any and all carriage charges. No returns of discontinued products, unless within 14 days of purchase. This policy does not affect your statutory rights and does not refer to faulty goods.

R&G Racing

Unit 1, Shelley's Lane, East Worldham, Alton, Hampshire, GU34 3AQ

Tel: +44 (0)1420 89007 Fax: +44 (0)1420 87301 www.rg-racing.com Email: info@rg-racing.com



MONTAGEANLEITUNG FÜR DAS KRÜMMERSCHUTZGITTER DG0015
HONDA CBR 500 R 2013

Page | 9



ALLE KIT-TEILE SIND ABGEBILDET UND UNTEN GEKENNZEICHNET.
ÜBERPRÜFEN SIE, DASS ALLE TEILE VORHANDEN SIND, BEVOR SIE MIT
DER MONTAGE BEGINNEN.

Hinweis: Die Verpackung der Teile stellt nicht die Reihenfolge der Montage dar.

Hinweis für Kits mit Plastikunterlegscheiben an den Schrauben – *Diese Plastikunterlegscheiben werden nicht für den Einbau benötigt!*

DIE ABGEBILDETEN TEILE DIENEN LEDIGLICH ZUR ERKLÄRUNG

SIE BENÖTIGEN FOLGENDES WERKZEUG:

- 10 und 12mm Steckschlüssel
- 4 und 5mm Inbusschlüssel
- Kreuzschlitzschraubendreher

Dieser Kit enthält:

- 1x Krümmerschutzgitter (DG0015BK)
- 2x M6 x 35mm Inbusschlüssel
- 2x M6 selbstsichernde Mutter



ABBILDUNG 1



ABBILDUNG 2



ABBILDUNG 3



ABBILDUNG 4

6

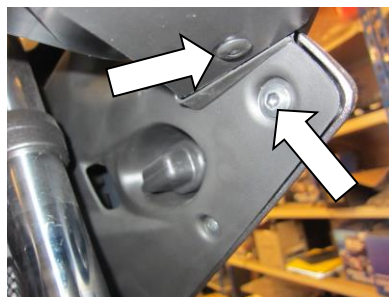


ABBILDUNG 5



ABBILDUNG



ABBILDUNG 7

9

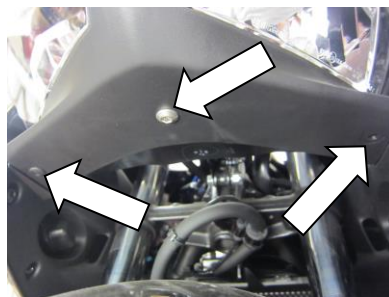
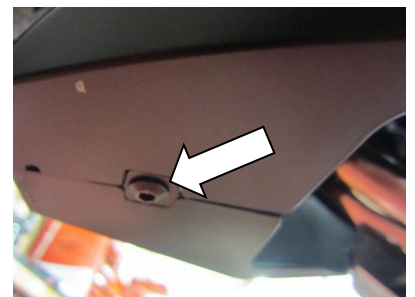


ABBILDUNG 8



ABBILDUNG

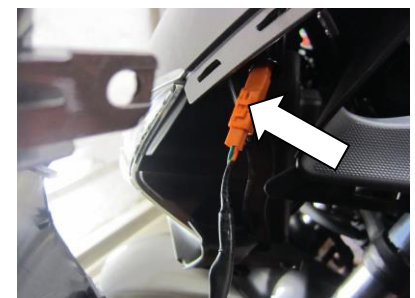




ABBILDUNG 10
12

ABBILDUNG 11

ABBILDUNG

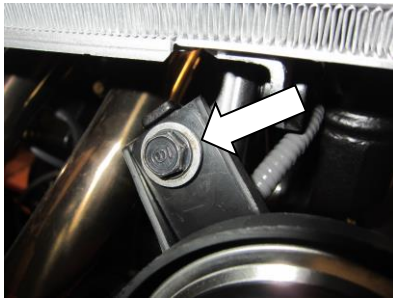


ABBILDUNG 13

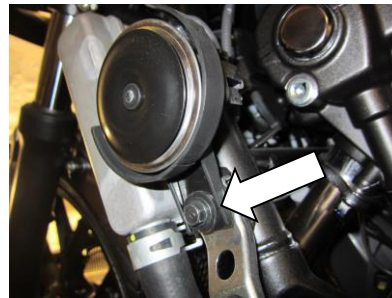


ABBILDUNG 14



ABBILDUNG

15

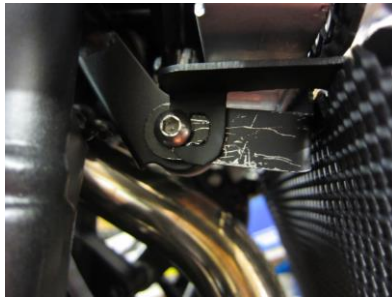


ABBILDUNG 16

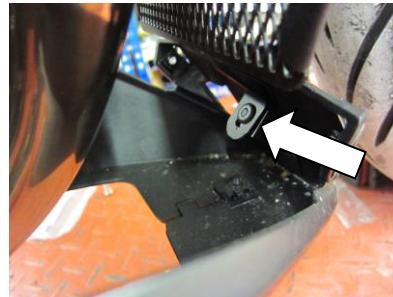
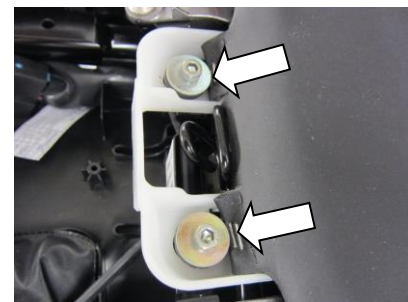


ABBILDUNG 17

MONTAGEANLEITUNG

Linke Seite (in Fahrtrichtung):

- Entfernen Sie den Beifahrersitz.
- Entfernen Sie die zwei markierten Schrauben und den Fahrersitz.



- Entfernen Sie alle Schrauben und Linsenkopfschrauben, die in den Abbildungen 1 bis 10 abgebildet sind.
- Entfernen Sie die Seitenabdeckung (unter dem Sitz/Tank), um Zugang zu der Schraube in Abbildung 11 zu ermöglichen - entfernen Sie die Schraube.
- Lösen Sie die Seitenverkleidung auf der linken Seite.
- Trennen Sie den Steckverbinder für die Blinker – siehe Abbildung 12 – und entfernen Sie die Seitenverkleidung.
- Entfernen Sie die Schraube in Abbildung 13, um die Hupe zu entfernen.
- Entfernen Sie die Schraube in Abbildung 14 und positionieren Sie die Hupe erneut, wie in Abbildung 14 dargestellt.
- Verwenden Sie den originalen Kabelhalter, um die Verkabelung zu sichern – siehe Abbildung 15.

R&G Racing

Unit 1, Shelley's Lane, East Worldham, Alton, Hampshire, GU34 3AQ

Tel: +44 (0)1420 89007 Fax: +44 (0)1420 87301 www.rg-racing.com Email: info@rg-racing.com



- Entfernen Sie die Linsenkopfschraube in Abbildung 17.
- Haltern Sie das Krümmerschutzgitter in Position und befestigen Sie beide oberen Montagehalterungen wie in Abbildung 16 abgebildet. Verwenden Sie hierfür die mitgelieferten Schrauben und Mutter.
- Montieren Sie die Linsenkopfschraube durch die untere Montagehalterung des Krümmerschutzgitters und wie ursprünglich befestigen (wie in Abbildung 17 dargestellt).
- Ziehen Sie alle Schrauben fest.
- Verbinden Sie den Blinker wieder.
- Montieren Sie die Seitenverkleidungsteile und die Seitenabdeckung wie ursprünglich.

AUSGABE 1 12/04/2013 (NSY)

CONSUMER NOTICE

The catalogue description and any exhibition of samples are only broad indications of the Products and R&G may make design changes which do not diminish their performance or visual appeal and supplying them in such state shall conform to the order. The Buyer acknowledges no representation or warranty (other than as to title) has been given or will apply to the Products other than those in R&G's order or confirmation and the Buyer confirms it has chosen the Products as being of merchantable quality and suitable for its particular purposes. Where R&G fits the Products or undertakes other services it shall exercise reasonable skill and care and rectify any fault free of charge unless the workmanship has been disturbed. The Buyer is responsible for ensuring that the warranty on the motorcycle is not affected by the fitting of the Products. On return of any defective Products R&G shall at its option either supply a replacement or refund the purchase money but shall not be liable if the Products have been modified or used or maintained otherwise than in accordance with R&G's or manufacturer's instructions and good engineering practice or if the defect arises from accident or neglect. Other than identified above and subject to R&G not limiting its liability for causing death and personal injury, it shall not be liable for indirect or consequential loss and otherwise its liability shall be limited to the amounts paid by the Buyer for the Products or the fitting or service concerned. These terms do not affect the Buyer's statutory rights.

R&G RACING RETURNS POLICY (NON-FAULTY GOODS)

Returns must be pre-authorized (if not pre-authorized the return will be rejected). Goods may only be returned direct to us if they were purchased direct from us (customer must prove if necessary). Otherwise to be returned to original vendor. Goods must be in re-sellable condition, in the opinion of R&G Racing. All returns are subject to a 25% restocking and handling fee (25% of the gross value exc. P&P – at the prevailing price at time of purchase). The customer must pay any and all carriage charges. No returns of discontinued products, unless within 14 days of purchase. This policy does not affect your statutory rights and does not refer to faulty goods.