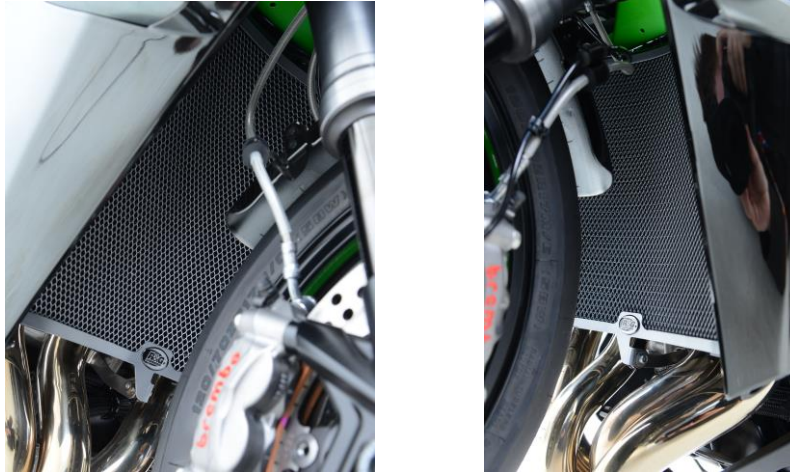




RAD0231

**FITTING INSTRUCTIONS FOR RAD0231 RADIATOR GUARD**  
**KAWASAKI NINJA H2 2018-**

Page | 1



**THIS KIT CONTAINS THE ITEMS PICTURED AND LABELLED BELOW.**  
**DO NOT PROCEED UNTIL YOU ARE SURE ALL PARTS ARE PRESENT.**

Please note that the way the kit is packed does not necessarily represent the way of mounting to the bike

Please note that in cases where kits are packed with rubber washers holding the components onto the bolt – *the rubber washers should be thrown away!*

THE PARTS SHOWN MAY BE REPRESENTATIVE ONLY (FOR CLARITY OF INSTRUCTIONS ONLY)

**Digital copies of these instructions are available to download from [www.rg-racing.com](http://www.rg-racing.com)**

**GENERAL TORQUE SETTINGS**

M4 BOLT = 8Nm  
M5 BOLT = 12Nm  
M6 BOLT = 15Nm  
M8 BOLT = 20Nm  
M10 BOLT = 40Nm

**TOOLS REQUIRED**

- 10mm Spanner or socket and wrench.
  - 4 and 5mm Allen key.

**In This Kit There Should Be**

- 1x Radiator Guard (RAD0231)
- 4x 100mm Lengths of self-adhesive Foam

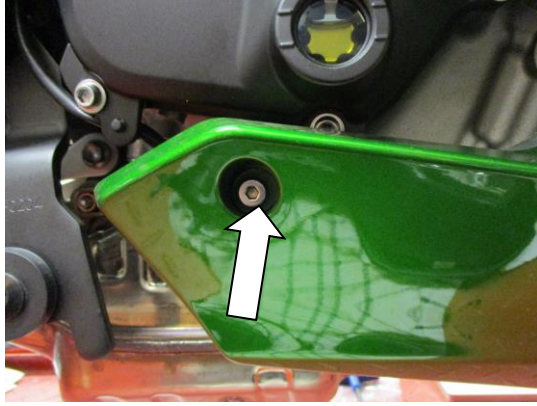
R&G

Unit 1, Shelley's Lane, East Worldham, Alton, Hampshire, GU34 3AQ  
Tel: +44 (0)1420 89007 Fax: +44 (0)1420 87301 [www.rg-racing.com](http://www.rg-racing.com) Email: [info@rg-racing.com](mailto:info@rg-racing.com)

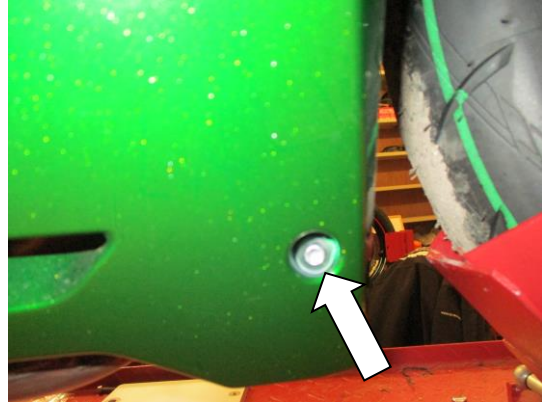


RAD0231

Page | 2



PICTURE 1



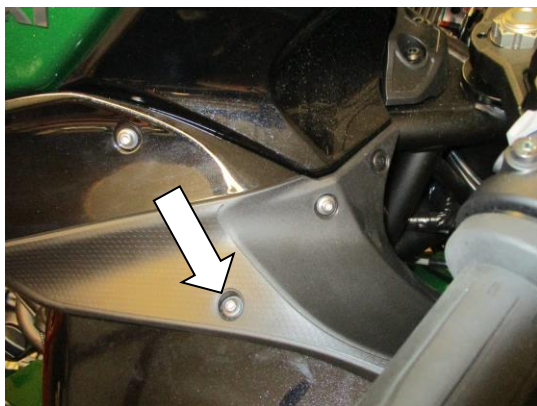
PICTURE 2



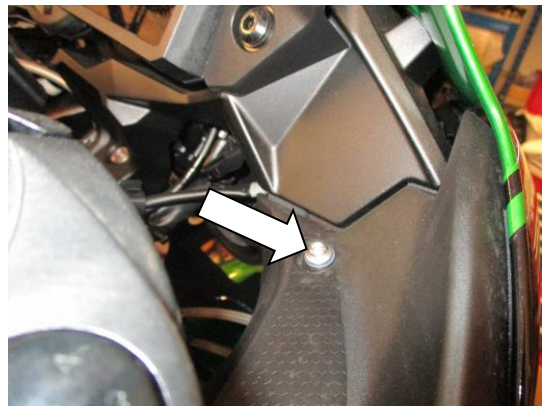
PICTURE 3



PICTURE 4



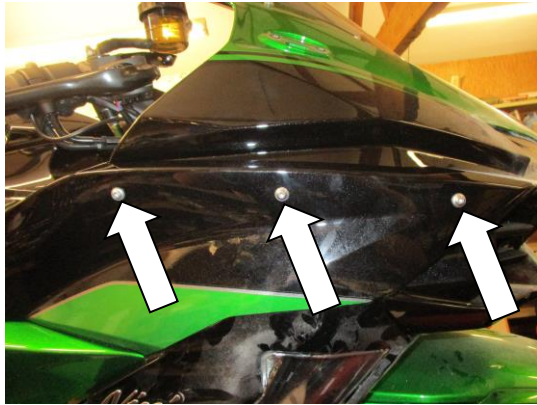
PICTURE 5



PICTURE 6



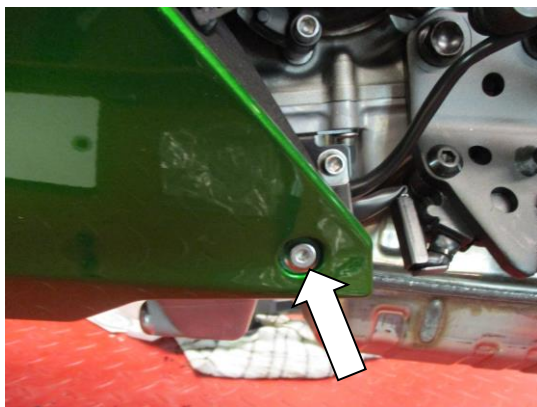
RAD0231



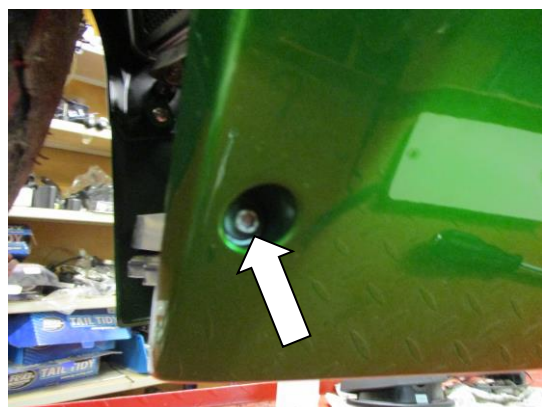
PICTURE 7



PICTURE 8



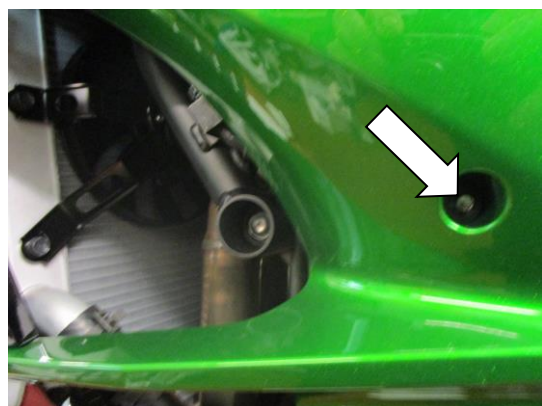
PICTURE 9



PICTURE 10



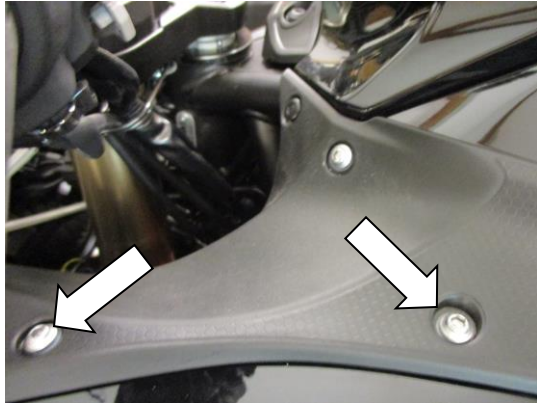
PICTURE 11



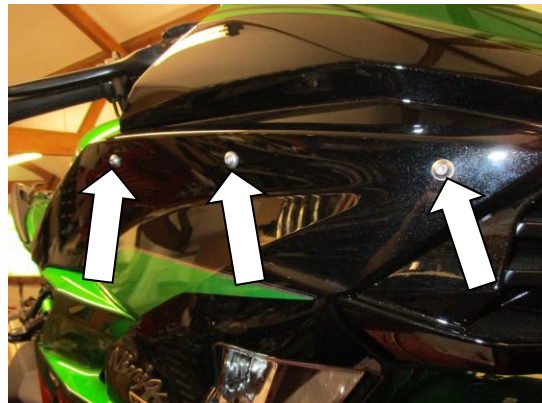
PICTURE 12



RAD0231



PICTURE 13



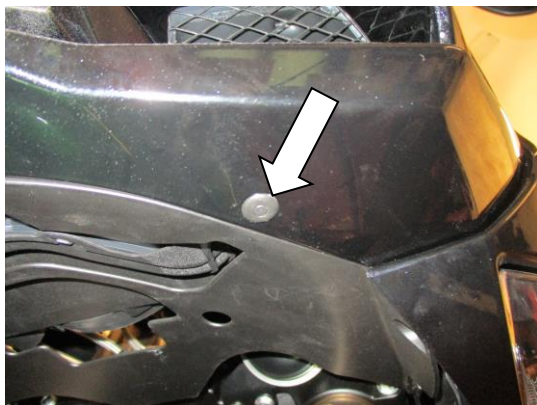
PICTURE 14



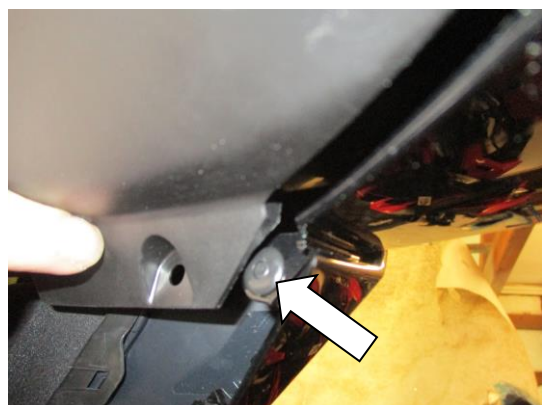
PICTURE 15



PICTURE 16



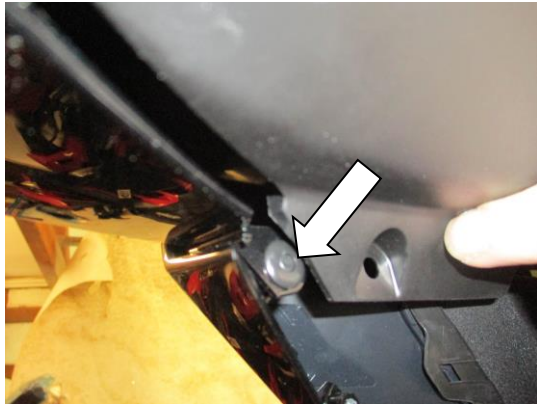
PICTURE 17



PICTURE 18



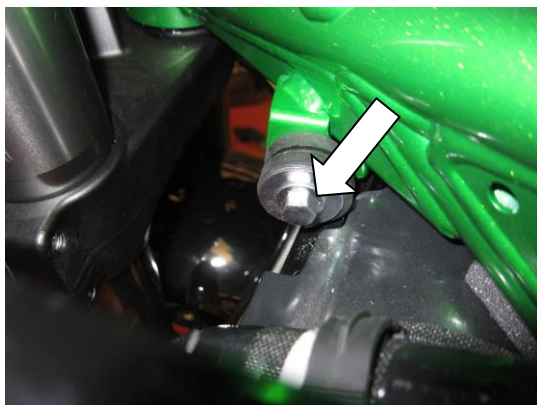
RAD0231



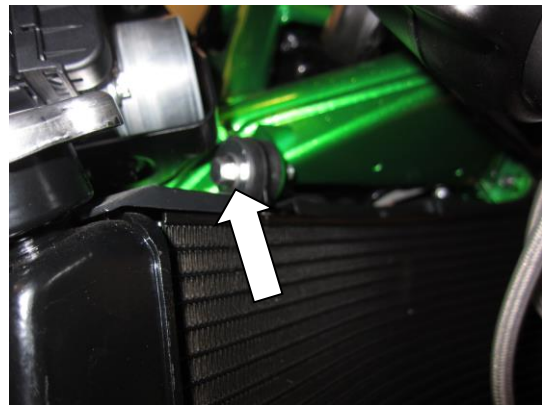
PICTURE 19



PICTURE 20



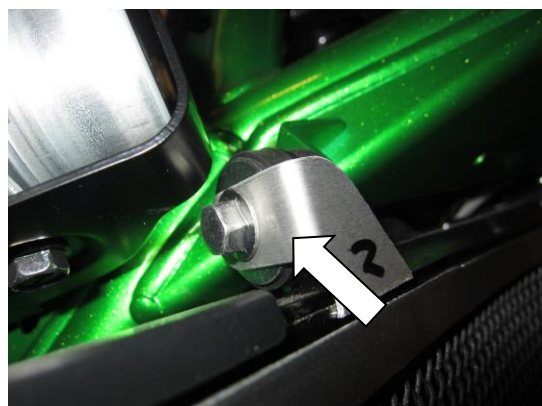
PICTURE 21



PICTURE 22



PICTURE 23



PICTURE 24

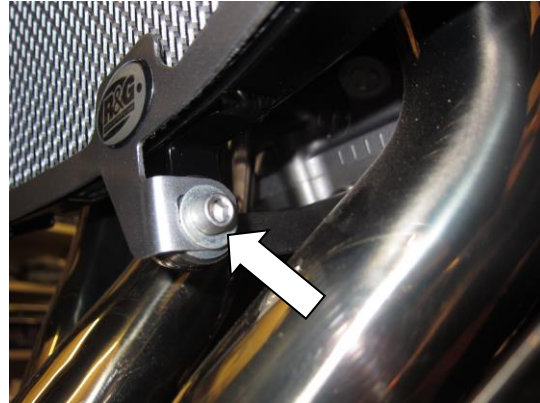


RAD0231

Page | 6



PICTURE 25



PICTURE 26

## **FITTING INSTRUCTIONS**

### **RIGHT HAND SIDE**

- Remove the four bolts arrowed in pictures 1, 2, 3 and 4.
- Remove the five bolts arrowed in pictures 5, 6, and 7.
- Remove the push rivet arrowed in picture 8.
- Then remove the right-hand side top/inner cover.

### **LEFT HAND SIDE**

- Remove the four bolts arrowed in pictures 9, 10, 11 and 12.
- Remove the five bolts arrowed in pictures 13, and 14.
- Remove the push rivet arrowed in picture 15.
- Then remove the left-hand side top/inner cover.
  
- Remove the two push rivets arrowed in pictures 15 and 16, then lower the headlight lower panel.
- Remove the two push rivets arrowed in pictures 18 and 19.
- Carefully pull either fairing away from the motorcycle and disconnect the indicator wiring plug/socket as shown in picture 20.
- Repeat the above for the opposite fairing.
- Remove the two upper radiator mounting bolts arrowed in pictures 21 and 22.
- Remove the lower radiator mounting bolt arrowed in picture 23.
- To fit the radiator guard to the bike cut the foam strip provided into 10mm wide pieces and stick them to the back of the radiator guard frame, so that they sit between the radiator guard and the radiator (please space these evenly all around the radiator guard frame as they prevent the guard coming into contact with the radiator).
- Carefully offer the radiator guard into position and secure in position using the original bolts on the upper and lower mountings as shown in pictures 24, 25 and 26.
- Refit all fairings and inner/top covers as original.

ISSUE 1 03/07/2018 (NSY)

R&G

Unit 1, Shelley's Lane, East Worldham, Alton, Hampshire, GU34 3AQ  
Tel: +44 (0)1420 89007 Fax: +44 (0)1420 87301 [www.rg-racing.com](http://www.rg-racing.com) Email: [info@rg-racing.com](mailto:info@rg-racing.com)



RAD0231

Page | 7

#### **CONSUMER NOTICE**

The catalogue description and any exhibition of samples are only broad indications of the Products and R&G may make design changes which do not diminish their performance or visual appeal and supplying them in such state shall conform to the order. The Buyer acknowledges no representation or warranty (other than as to title) has been given or will apply to the Products other than those in R&G's order or confirmation and the Buyer confirms it has chosen the Products as being of merchantable quality and suitable for its particular purposes. Where R&G fits the Products or undertakes other services it shall exercise reasonable skill and care and rectify any fault free of charge unless the workmanship has been disturbed. The Buyer is responsible for ensuring that the warranty on the motorcycle is not affected by the fitting of the Products. On return of any defective Products R&G shall at its option either supply a replacement or refund the purchase money but shall not be liable if the Products have been modified or used or maintained otherwise than in accordance with R&G's or manufacturer's instructions and good engineering practice or if the defect arises from accident or neglect. Other than identified above and subject to R&G not limiting its liability for causing death and personal injury, it shall not be liable for indirect or consequential loss and otherwise its liability shall be limited to the amounts paid by the Buyer for the Products or the fitting or service concerned. These terms do not affect the Buyer's statutory rights.

#### **R&G RACING RETURNS POLICY (NON-FAULTY GOODS)**

Returns must be pre-authorized (if not pre-authorized the return will be rejected). Goods may only be returned direct to us if they were purchased direct from us (customer must prove if necessary). Otherwise to be returned to original vendor. Goods must be in re-sellable condition, in the opinion of R&G Racing. All returns are subject to a 25% restocking and handling fee (25% of the gross value exc. P&P – at the prevailing price at time of purchase). The customer must pay any and all carriage charges. No returns of discontinued products, unless within 14 days of purchase. This policy does not affect your statutory rights and does not refer to faulty goods.

R&G

Unit 1, Shelley's Lane, East Worldham, Alton, Hampshire, GU34 3AQ

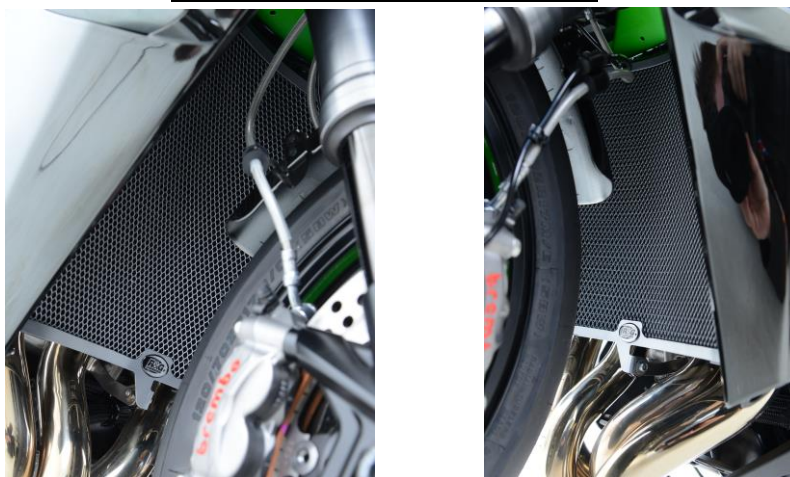
Tel: +44 (0)1420 89007 Fax: +44 (0)1420 87301 [www.rg-racing.com](http://www.rg-racing.com) Email: [info@rg-racing.com](mailto:info@rg-racing.com)



RAD0231

**NOTICE DE MONTAGE POUR RAD0231**  
**GRILLE DE PROTECTION RADIATEUR**  
**KAWASAKI NINJA H2 2018-**

Page | 8



**Le kit contient les articles exposés ci-dessous, vérifier que toutes les pièces soient présentes avant de procéder au montage.**

**La façon dont le kit est emballé ne correspond pas forcément à la façon de monter les pièces sur la moto.**

**Notez que si les kits sont emballés avec des rondelles en caoutchouc servant à tenir les composants, ces rondelles doivent être jetées**

**LES PARTIES PRÉSENTÉES PEUVENT ÊTRE UNIQUEMENT REPRESENTATIVES (POUR LA CLARTE DES INSTRUCTIONS UNIQUEMENT**

**Notice disponible au téléchargement sur [www.rg-racing.com](http://www.rg-racing.com)**

**VALEURS DE SERRAGE RECOMMANDÉES**

M4 BOULON = 8Nm  
M5 BOULON = 12Nm  
M6 BOULON = 15Nm  
M8 BOULON = 20Nm  
M10 BOULON = 40Nm

**OUTILS REQUIS**

- Clé à cliquet + douille 10mm.
- Clés Allen 4 et 5mm.

**Le kit doit contenir:**

- 1 x Grille de protection radiateur (RAD0231)
- 4x 100mm Longueur de mousse autocollante





RAD0231

## **NOTICE DE MONTAGE**

Page | 9

### **CÔTÉ DROIT**

- Enlever les 4 boulons, voir photos 1, 2, 3 et 4.
- Enlever les 5 boulons, voir photos 5, 6, et 7.
- Enlever le rivet, voir photo 8.
- Puis enlever le cache du dessus/le cache interne du côté droit.

### **CÔTÉ GAUCHE**

- Enlever les 4 boulons, voir photos 9, 10, 11 et 12.
  - Enlever les 5 boulons, voir photos 13, et 14.
  - Enlever le rivet, voir photo 15.
  - Puis enlever le cache du dessus/le cache interne du côté gauche.
- 
- Enlever les 2 rivets, voir photos 15 et 16, puis abaisser le panneau inférieur de phare.
  - Enlever les 2 rivets, voir photos 18 et 19.
  - Retirer le carénage de la moto puis déconnecter la prise de clignotant, voir photo 20.
  - Répéter l'étape du dessus pour le carénage oppose.
  - Enlever les 2 boulons de fixation du radiateur supérieur, voir photos 21 et 22.
  - Enlever le boulon de fixation radiateur inférieur, voir photo 23.
  - Pour monter la grille de protection sur la moto, couper la mousse autocollante fournie en bandeaux de 10mm puis collez les au bas du cadre de protection radiateur, de façon à ce qu'ils se placent entre la grille de protection radiateur et le radiateur (svp, espacez-les de façon égale autour du cadre de protection radiateur car ils empêcheront la protection de toucher le radiateur).
  - Monter la grille de protection en position puis fixer la position à l'aide des boulons d'origine les supports de fixation inférieur et supérieur, voir photos 24, 25 et 26.
  - Remonter tous les carénages et le cache supérieur et le cache interne comme à l'origine.

ISSUE 1 03/07/2018 (NSY)

### **CONSUMER NOTICE**

The catalogue description and any exhibition of samples are only broad indications of the Products and R&G may make design changes which do not diminish their performance or visual appeal and supplying them in such state shall conform to the order. The Buyer acknowledges no representation or warranty (other than as to title) has been given or will apply to the Products other than those in R&G's order or confirmation and the Buyer confirms it has chosen the Products as being of merchantable quality and suitable for its particular purposes. Where R&G fits the Products or undertakes other services it shall exercise reasonable skill and care and rectify any fault free of charge unless the workmanship has been disturbed. The Buyer is responsible for ensuring that the warranty on the motorcycle is not affected by the fitting of the Products. On return of any defective Products R&G shall at its option either supply a replacement or refund the purchase money but shall not be liable if the Products have been modified or used or maintained otherwise than in accordance with R&G's or manufacturer's instructions and good engineering practice or if the defect arises from accident or neglect. Other than identified above and subject to R&G not limiting its liability for causing death and personal injury, it shall not be liable for indirect or consequential loss and otherwise its liability shall be limited to the amounts paid by the Buyer for the Products or the fitting or service concerned. These terms do not affect the Buyer's statutory rights.

R&G

Unit 1, Shelley's Lane, East Worldham, Alton, Hampshire, GU34 3AQ  
Tel: +44 (0)1420 89007 Fax: +44 (0)1420 87301 [www.rg-racing.com](http://www.rg-racing.com) Email: [info@rg-racing.com](mailto:info@rg-racing.com)



RAD0231

**R&G RACING RETURNS POLICY (NON-FAULTY GOODS)**

Returns must be pre-authorized (if not pre-authorized the return will be rejected). Goods may only be returned direct to us if they were purchased direct from us (customer must prove if necessary). Otherwise to be returned to original vendor. Goods must be in re-sellable condition, in the opinion of R&G Racing. All returns are subject to a 25% restocking and handling fee (25% of the gross value exc. P&P – at the prevailing price at time of purchase). The customer must pay any and all carriage charges. No returns of discontinued products, unless within 14 days of purchase. This policy does not affect your statutory rights and does not refer to faulty goods.

R&G

Unit 1, Shelley's Lane, East Worldham, Alton, Hampshire, GU34 3AQ

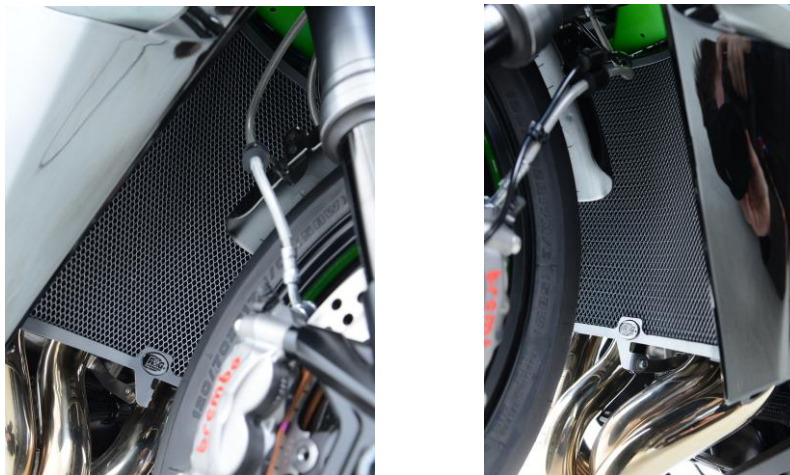
Tel: +44 (0)1420 89007 Fax: +44 (0)1420 87301 [www.rg-racing.com](http://www.rg-racing.com) Email: [info@rg-racing.com](mailto:info@rg-racing.com)



RAD0231

## MONTAGEANLEITUNG FÜR RAD0231 KÜHLERSCHUTZ KAWASAKI NINJA H2 2018-

Page | 11



**ALLE KIT-TEILE SIND UNTEN ABGEBILDET UND GEKENNZEICHNET. BEVOR SIE MIT DER MONTAGE BEGINNEN, ÜBERPRÜFEN SIE, DASS ALLE TEILE VORHANDEN SIND.**

**Hinweis:** Die Verpackung der Teile stellt nicht die Reihenfolge der Montage dar.

Hinweis für Kits mit Plastikunterlegscheiben an den Schrauben – *Diese Plastikunterlegscheiben werden nicht für den Einbau benötigt!*

DIE UNTEN ABGEBILDETEN TEILE DIENEN LEDIGLICH ZUR ERKLÄRUNG

**Eine digitale Version dieser Montageanleitung kann auf folgender Seite heruntergeladen werden:**

[www.rg-racing.com](http://www.rg-racing.com)

### ANZUGSDREHMOMENT

M4 SCHRAUBE = 8Nm  
M5 SCHRAUBE = 12Nm  
M6 SCHRAUBE = 15Nm  
M8 SCHRAUBE = 20Nm  
M10 SCHRAUBE = 40Nm

### SIE BENÖTIGEN FOLGENDES WERKZEUG:

- 10mm Steckschlüssel
- 4 und 5mm Inbusschlüssel

### Dieser Kit beinhaltet:

- 1x Kühlerschutz (RAD0231)
- 4x 100mm selbstklebende Schaumstoffstreifen

R&G

Unit 1, Shelley's Lane, East Worldham, Alton, Hampshire, GU34 3AQ  
Tel: +44 (0)1420 89007 Fax: +44 (0)1420 87301 [www.rg-racing.com](http://www.rg-racing.com) Email: [info@rg-racing.com](mailto:info@rg-racing.com)



RAD0231

## MONTAGEANLEITUNG

### RECHTE SEITE

Page | 12

- Entfernen Sie die vier Schrauben, die in den Abbildungen 1, 2, 3 und 4 gekennzeichnet sind.
- Entfernen Sie die fünf Schrauben, die in den Abbildungen 5, 6, und 7 markiert sind.
- Entfernen Sie die Plastikniete, die in Abbildung 8 mit einem Pfeil gekennzeichnet ist.
- Danach die obere/innere Abdeckung an der rechten Seite entfernen.

### LNKE SEITE

- Entfernen Sie die vier Schrauben, die in Abbildungen 9, 10, 11 und 12 gekennzeichnet sind.
- Entfernen Sie die fünf Schrauben, die in den Abbildungen 13 und 14 markiert sind.
- Entfernen Sie die die Plastikniete, die in Abbildung 15 mit einem Pfeil gekennzeichnet ist.
- Danach die obere/innere Abdeckung an der linken Seite entfernen.
  
- Entfernen Sie die zwei Plastiknieten, die in den Abbildungen 15 und 16 gekennzeichnet sind, dann das Verkleidungsteil am Scheinwerfer senken.
- Entfernen Sie die zwei Plastiknieten, die in den Abbildungen 18 und 19 markiert sind.
- Die Verkleidung vorsichtig vom Motorrad entfernen und den Steckverbinder für die Blinkerkabel trennen – siehe Abbildung 20.
- Diesen Schritt mit der zweiten Verkleidung wiederholen.
- Entfernen Sie die zwei oberen Montageschrauben für den Kühler, die in den Abbildungen 21 und 22 gekennzeichnet sind.
- Entfernen Sie die untere Montageschraube, die in Abbildung 23 markiert ist.
- Um den Kühlerschutz am Motorrad zu montieren, schneiden Sie die mitgelieferten Schaumstoffstreifen in 10 mm breite Streifen und kleben Sie diese auf der Rückseite des Kühlerschutzrahmens, so dass sie zwischen dem Kühlerschutz und dem Kühler angebracht sind (bitte gleichmäßig um den Rahmen verteilen, um zu verhindern, dass der Kühlerschutz den Kühler berührt).
- Den Kühlerschutz in Position bringen und mit den Originalschrauben an den oberen und unteren Halterungen befestigen (siehe Abbildungen 24, 25 und 26).
- Montieren Sie alle Verkleidungen und innere/obere Abdeckungen wie ursprünglich wieder.

AUSGABE 1 03/07/2018 (NSY)

#### **CONSUMER NOTICE**

The catalogue description and any exhibition of samples are only broad indications of the Products and R&G may make design changes which do not diminish their performance or visual appeal and supplying them in such state shall conform to the order. The Buyer acknowledges no representation or warranty (other than as to title) has been given or will apply to the Products other than those in R&G's order or confirmation and the Buyer confirms it has chosen the Products as being of merchantable quality and suitable for its particular purposes. Where R&G fits the Products or undertakes other services it shall exercise reasonable skill and care and rectify any fault free of charge unless the workmanship has been disturbed. The Buyer is responsible for ensuring that the warranty on the motorcycle is not affected by the fitting of the Products. On return of any defective Products R&G shall at its option either supply a replacement or refund the purchase money but shall not be liable if the Products have been modified or used or maintained otherwise than in accordance with R&G's or manufacturer's instructions and good engineering practice or if the defect arises from accident or neglect. Other than identified above and subject to R&G not limiting its liability for causing death and personal injury, it shall not be liable for indirect or consequential loss and otherwise its liability shall be limited to the amounts paid by the Buyer for the Products or the fitting or service concerned. These terms do not affect the Buyer's statutory rights.

#### **R&G RACING RETURNS POLICY (NON-FAULTY GOODS)**

Returns must be pre-authorized (if not pre-authorized the return will be rejected). Goods may only be returned direct to us if they were purchased direct from us (customer must prove if necessary). Otherwise to be returned to original vendor. Goods must be in re-sellable condition, in the opinion of R&G Racing. All returns are subject to a 25% restocking and handling fee (25% of the gross value exc. P&P – at the prevailing price at time of purchase). The customer must pay any and all carriage charges. No returns of discontinued products, unless within 14 days of purchase. This policy does not affect your statutory rights and does not refer to faulty goods.

R&G

Unit 1, Shelley's Lane, East Worldham, Alton, Hampshire, GU34 3AQ

Tel: +44 (0)1420 89007 Fax: +44 (0)1420 87301 [www.rg-racing.com](http://www.rg-racing.com) Email: [info@rg-racing.com](mailto:info@rg-racing.com)