



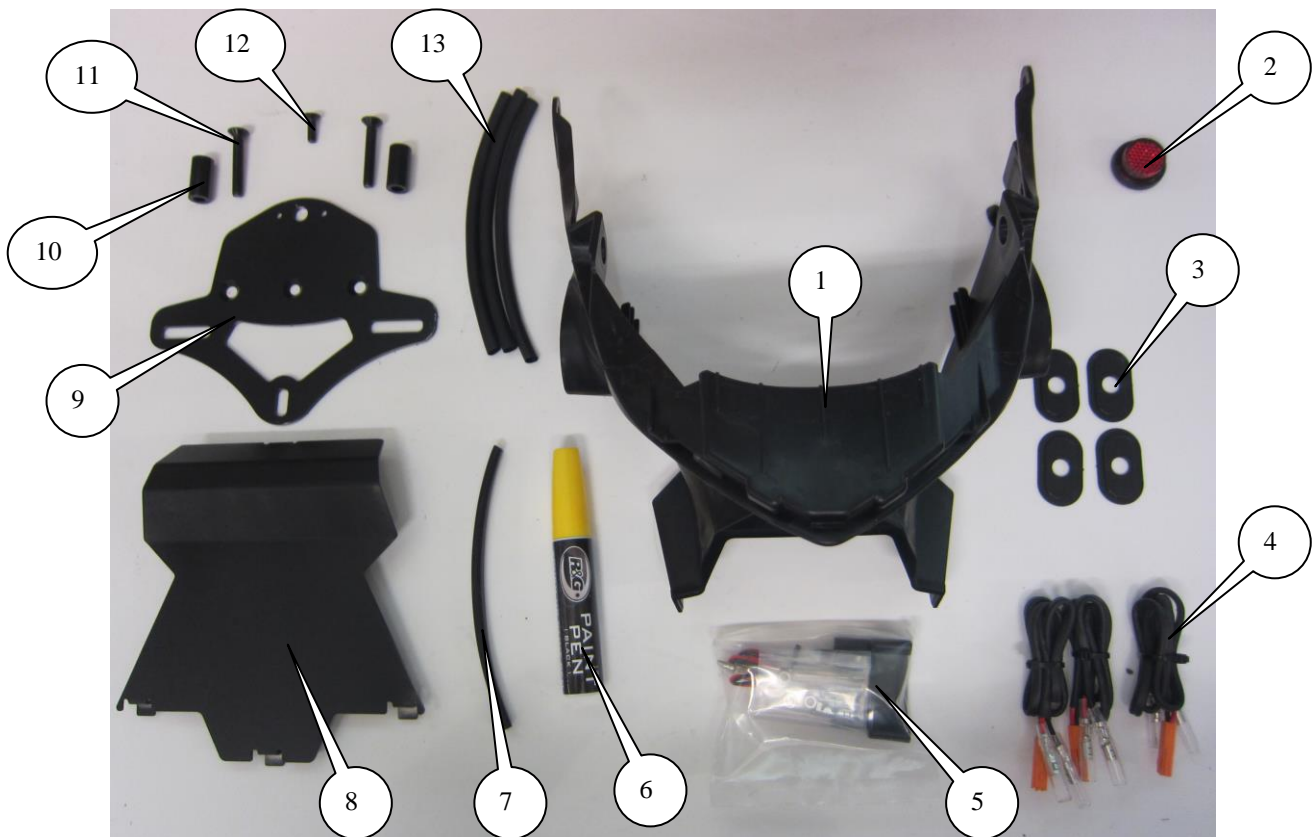
FITTING INSTRUCTIONS FOR LP0151BK LICENCE PLATE BRACKET
HONDA CBR500R/ CB500X and CB500F 2013

Page | 1



THIS KIT CONTAINS THE ITEMS PICTURED AND LABELLED BELOW.
DO NOT PROCEED UNTIL YOU ARE SURE ALL PARTS ARE PRESENT.
Please note that the way the kit is packed does not necessarily represent the way of mounting to the bike

THE PARTS SHOWN MAY BE REPRESENTATIVE ONLY (FOR CLARITY OF INSTRUCTIONS ONLY)





LEGEND

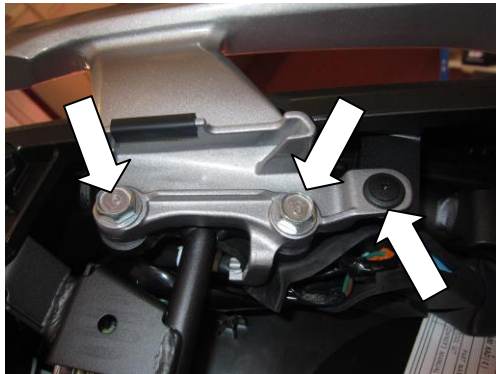
- ITEM 1 = MOULDED REAR LIGHT MOUNTING BRACKET (TB0151 BK) (x1).
ITEM 2 = REFLECTOR (REFL 1) (x1).
ITEM 3 = MINI INDICATOR ADAPTORS (I0031) (x4).
ITEM 4 = LICENCE PLATE ILLUMINATOR/MINI CONNECTORS (CON009) (x3).
ITEM 5 = LICENCE PLATE ILLUMINATOR ASSEMBLY (LA0002) (x1)
ITEM 6 = PAINT PEN (x1).
ITEM 7 = BLACK RUBBER SEAL (SRS002) (300mm LONG).
ITEM 8 = UNDER-TRAY (TB0151 Part 2) (x1).
ITEM 9 = LICENCE PLATE MOUNTING BRACKET (TB0151 Part 1) (x1).
ITEM 10 = SPACERS (S0711) (x2).
ITEM 11 = M6x40mm LONG COUNTER SUNK BOLT (BLACK) (x2).
ITEM 12 = M5x16mm LONG COUNTER SUNK BOLT (BLACK) (x1).
ITEM 13 = 150mm LENGTHS OF HEAT SHRINK (x3).

Page | 2

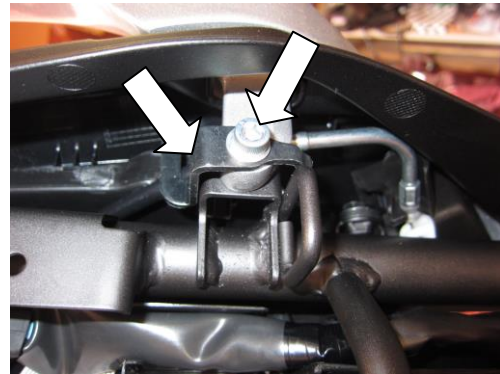
Please note that in cases where kits are packed with rubber washers holding the components onto the bolt – *the rubber washers should be thrown away!*

TOOLS REQUIRED

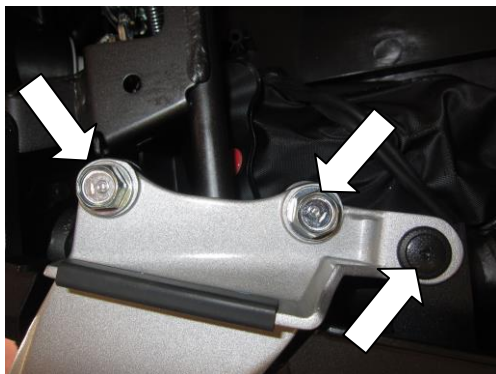
- Set of metric Allen keys to include 4 and 6mm A/F size.
- Socket set to include 6, 8, 10 and 12mm A/F socket and wrench.
 - 10mm spanner.
 - Phillips driver.
- Small amount of super glue.



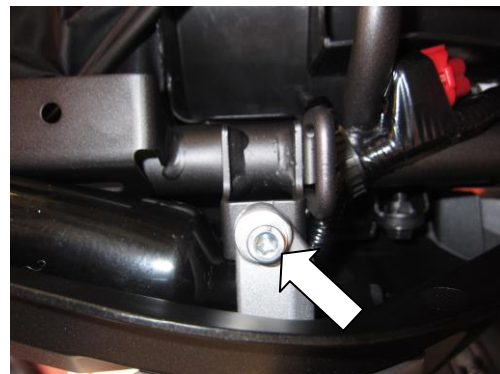
PICTURE 1



PICTURE 2

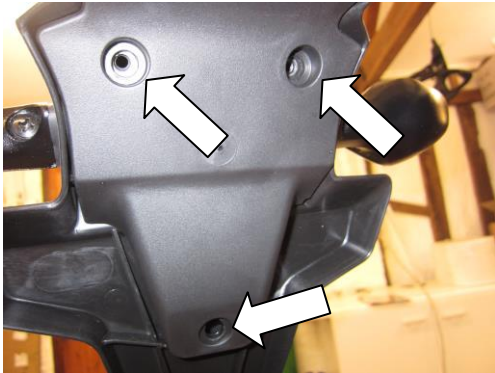


PICTURE 3



PICTURE 4

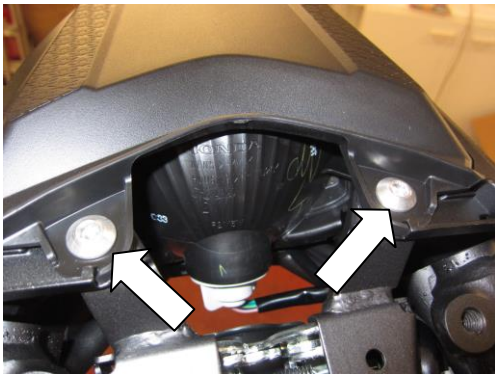
R&G Racing
Unit 1, Shelley's Lane, East Worldham, Alton, Hampshire, GU34 3AQ
Tel: +44 (0)1420 89007 Fax: +44 (0)1420 87301 www.rg-racing.com Email: info@rg-racing.com



PICTURE 5



PICTURE 6



PICTURE 7



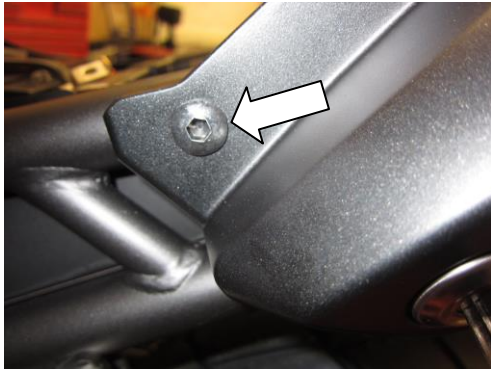
PICTURE 8



PICTURE 9



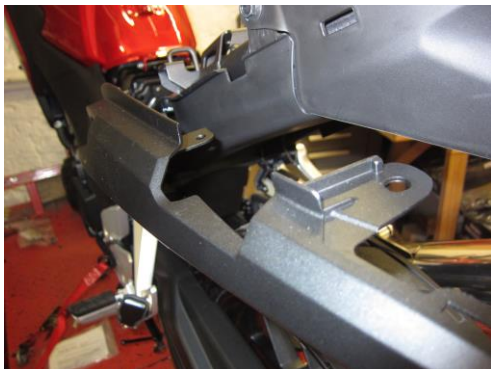
PICTURE 10



PICTURE 11



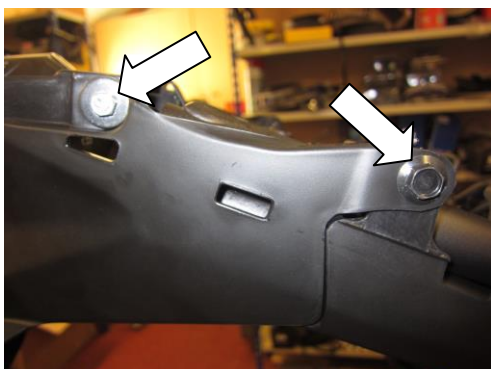
PICTURE 12



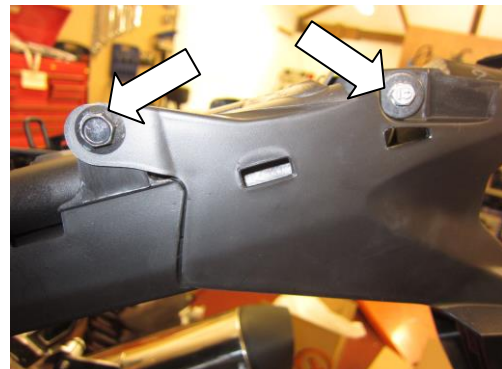
PICTURE 13



PICTURE 14



PICTURE 15



PICTURE 16



PICTURE 17



PICTURE 18



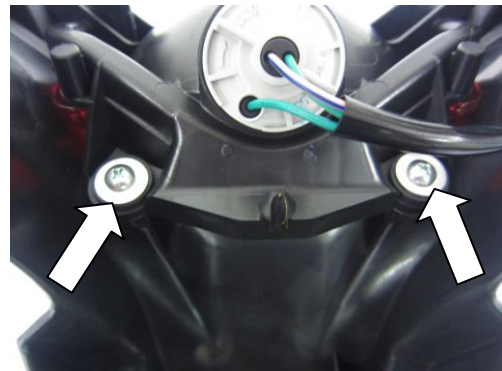
PICTURE 19



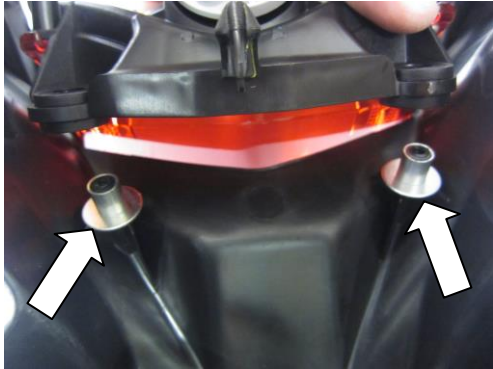
PICTURE 20



PICTURE 21



PICTURE 22



PICTURE 23



PICTURE 24



PICTURE 25



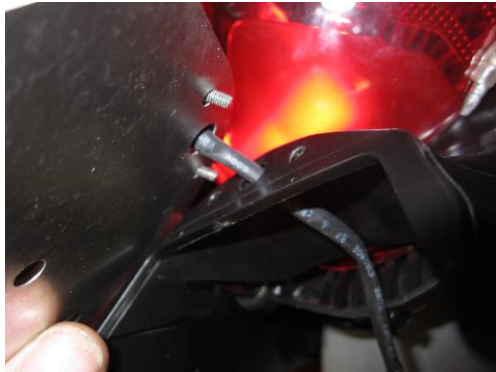
PICTURE 26



PICTURE 27



PICTURE 28



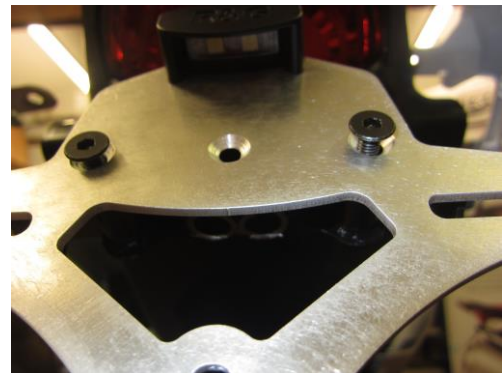
PICTURE 29



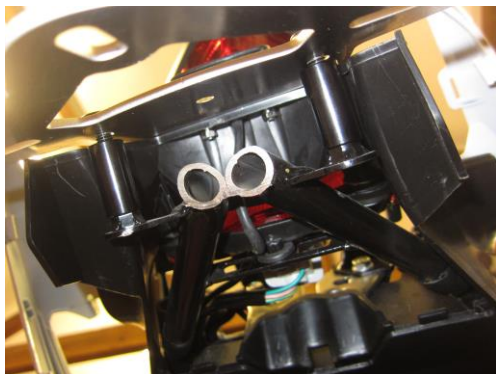
PICTURE 30



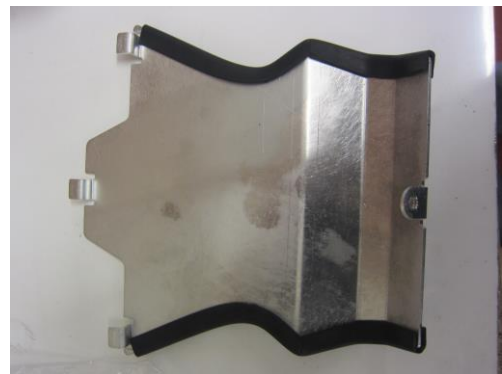
PICTURE 31



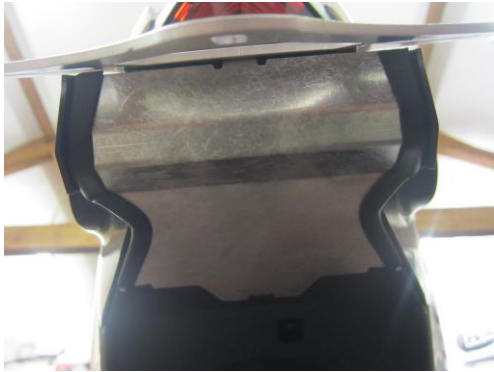
PICTURE 32



PICTURE 33



PICTURE 34



PICTURE 35



PICTURE 36

FITTING INSTRUCTIONS

- Remove the pillion seat using the key.
- Remove the rider's seat.
- Remove the two bolts and the plastic push rivet arrowed in picture 1 and remove the grab rail.
- Remove the bolt and cable tidy (metal bracket) arrowed in picture 2.
- Remove the two bolts and the plastic push rivet arrowed in picture 3 and remove the grab rail.
- Remove the bolt arrowed in picture 4.
- Remove the three bolts arrowed in picture 5.
- Remove the bolt arrowed in picture 6.
- Remove the plastic cable/under-tray cover as shown in picture 5.
- Remove the two bolts arrowed in picture 7 and remove the rear light cowl.
- Remove the side panel bolt arrowed in picture 9.
- Remove the plastic push rivet from under the side panel as arrowed in picture 10.
- Remove the left hand side panel.
- Remove the bolt arrowed in picture 11.
- Remove the plastic push rivet from under the side panel as arrowed in picture 12.
- Gently remove the side panel and place on sub-frame (this will save from having to remove the seat lock mechanism). As shown in picture 13.
- Disconnect the four plug sockets arrowed in picture 14.
- Remove the four bolts arrowed in pictures 15 and 16.
- Gently remove the original licence plate bracket and remove the cable tie arrowed in picture 17.
- With the original licence plate bracket removed from the motorcycle remove the screw and cable clip arrowed in picture 18.
- If reusing the original indicators remove as below.
- Remove the nut arrowed in picture 18.
- Pull the securing plate out in the direction arrowed in picture 19 and remove.
- Pull the indicator and wiring through the rubber grommet as shown in picture 20.
- Remove the rubber grommet as shown in picture 21. Repeat for the other indicator.

R&G Racing

Unit 1, Shelley's Lane, East Worldham, Alton, Hampshire, GU34 3AQ

Tel: +44 (0)1420 89007 Fax: +44 (0)1420 87301 www.rg-racing.com Email: info@rg-racing.com



- Fit the indicators to the new licence plate bracket (item 1) as original. If using mini's fit the indicators of choice to the licence plate bracket assembly (R&G mini indicator product code RG370 for bulb type and RG371 for LED type) using the four indicator adaptors (item 3).
- Remove the two screws arrowed in picture 22.
- Remove the original rear light (it is rubber mounted on the upstands arrowed in picture 23).
- Remove the two location spacers arrowed in picture 23.
- Remove the two side mounting spacers by pushing the aluminium centre part out in the direction arrowed in picture 24 and remove the two side mounting rubber grommets.
- Fit the two side mounting rubber grommets to the new licence plate bracket (item 1) as original (shown in picture 24).
- Fit the two aluminium side mounting spacers as original to the new licence plate bracket as shown in picture 24.
- Fit the two upstands to the new licence plate bracket as shown in picture 23.
- Fit the original rear light to the new licence plate bracket as original.
- Fit the new licence plate illuminator (item 5) through the new licence plate bracket (item 9) as shown in picture 28.
- Fit the new licence plate bracket with licence plate illuminator through the new rear light mounting bracket (item 1) as shown in picture 29 and secure with the washers and nuts supplied as shown in pictures 30 and 31.
- **PLEASE NOTE YOU WILL NEED TO GLUE THE LIGHT SHROUD TO THE LED LICENCE PLATE ILLUMINATOR USING SUPER GLUE.**
- You will need to remove the lower section of the original licence support bracket using either hack-saw, dremmel or angle grinder as shown in pictures 25 and 26 (please note do not remove the threaded bosses) as indicated below.



R&G Racing

Unit 1, Shelley's Lane, East Worldham, Alton, Hampshire, GU34 3AQ
Tel: +44 (0)1420 89007 Fax: +44 (0)1420 87301 www.rg-racing.com Email: info@rg-racing.com



- Use the paint pen (item 6) to cover the bare metal as shown in picture 27.
- Offer the licence plate assembly into position (as shown in picture 31) feeding the wiring through the sub frame as original (if using mini indicators please use the provided heat shrink (item 13) to protect the wires and use two of the provided connectors (item 4) to connect the indicators).
- Use one of the connectors (item 4) provided to connect the licence plate illuminator as original.
- Refit the four side mounting bolts as original (shown in pictures 15 and 16).
- Reconnect all lights and indicators (please check operation of all lights at this stage (if the licence plate illuminator fails to work swap the bullet connectors).
- Using the two longer counter sunk bolts (item 11) and the two spacers (item 10) secure the licence plate mounting bracket to the two threaded bosses on the original licence plate support as shown in pictures 32 and 33.
- Trim and glue the black rubber seal (item 7) along the edges of the new under-tray (item 8) as shown in picture 34.
- Offer the under-tray into position (as shown in picture 35) locating as the original and secure using the shorter counter-sunk bolt as shown in picture 36.
- Refit both side panels as original (including the metal cable tidy shown in picture 2).
- Refit the rear light cowl as original.
- Refit the grab rails as original.
- Fit licence plate to new licence plate bracket (it may require drilling).
- **IMPORTANT: IF FITTING A FULL-SIZE LICENCE PLATE AND PLACING IT FAR DOWN ON THE LICENCE PLATE HANGER, THERE IS A SMALL CHANCE OF THE LICENCE PLATE HITTING THE BACK WHEEL UNDER HEAVY LOAD AND OVER LARGE BUMPS IN THE ROAD. IT IS YOUR RESPONSIBILITY TO CHECK FOR THIS POSSIBILITY AND TAKE AVOIDING ACTION. FAILURE TO CHECK THIS COULD RESULT IN SERIOUS INJURY.**
- Refit pillion and rider seat.
- Depending on local laws, attach enclosed red reflector (item 2) in an appropriate location.
- **Please test the indicators, rear light and licence plate illuminator before riding.**

ISSUE 1 06/11/2013 (NSY)

CONSUMER NOTICE

The catalogue description and any exhibition of samples are only broad indications of the Products and R&G may make design changes which do not diminish their performance or visual appeal and supplying them in such state shall conform to the order. The Buyer acknowledges no representation or warranty (other than as to title) has been given or will apply to the Products other than those in R&G's order or confirmation and the Buyer confirms it has chosen the Products as being of merchantable quality and suitable for its particular purposes. Where R&G fits the Products or undertakes other services it shall exercise reasonable skill and care and rectify any fault free of charge unless the workmanship has been disturbed. The Buyer is responsible for ensuring that the warranty on the motorcycle is not affected by the fitting of the Products. On return of any defective Products R&G shall at its option either supply a replacement or refund the purchase money but shall not be liable if the Products have been modified or used or maintained otherwise than in accordance with R&G's or manufacturer's instructions and good engineering practice or if the defect arises from accident or neglect. Other than identified above and subject to R&G not limiting its liability for causing death and personal injury, it shall not be liable for indirect or consequential loss and otherwise its liability shall be limited to the amounts paid by the Buyer for the Products or the fitting or service concerned. These terms do not affect the Buyer's statutory rights.

R&G RACING RETURNS POLICY (NON-FAULTY GOODS)

Returns must be pre-authorized (if not pre-authorized the return will be rejected). Goods may only be returned direct to us if they were purchased direct from us (customer must prove if necessary). Otherwise to be returned to original vendor. Goods must be

R&G Racing

Unit 1, Shelley's Lane, East Worldham, Alton, Hampshire, GU34 3AQ

Tel: +44 (0)1420 89007 Fax: +44 (0)1420 87301 www.rg-racing.com Email: info@rg-racing.com



in re-sellable condition, in the opinion of R&G Racing. All returns are subject to a 25% restocking and handling fee (25% of the gross value exc. P&P – at the prevailing price at time of purchase). The customer must pay any and all carriage charges. No returns of discontinued products, unless within 14 days of purchase. This policy does not affect your statutory rights and does not refer to faulty goods.