



FITTING INSTRUCTIONS FOR AB0040BK ADVENTURE BARS
SUZUKI SV650 X 2018-



THIS KIT CONTAINS THE ITEMS PICTURED AND LABELLED BELOW.
DO NOT PROCEED UNTIL YOU ARE SURE ALL PARTS ARE PRESENT.

Please note that the way the kit is packed does not necessarily represent the way of mounting to the bike

Please note that in cases where kits are packed with rubber washers holding the components onto the bolt – *the rubber washers should be thrown away!*

THE PARTS SHOWN MAY BE REPRESENTATIVE ONLY (FOR CLARITY OF INSTRUCTIONS ONLY)

Digital copies of these instructions are available to download from www.rg-racing.com

GENERAL TORQUE SETTINGS

- M4 BOLT = 8Nm
- M5 BOLT = 12Nm
- M6 BOLT = 15Nm
- M8 BOLT = 20Nm
- M10 BOLT = 40Nm

TOOLS REQUIRED

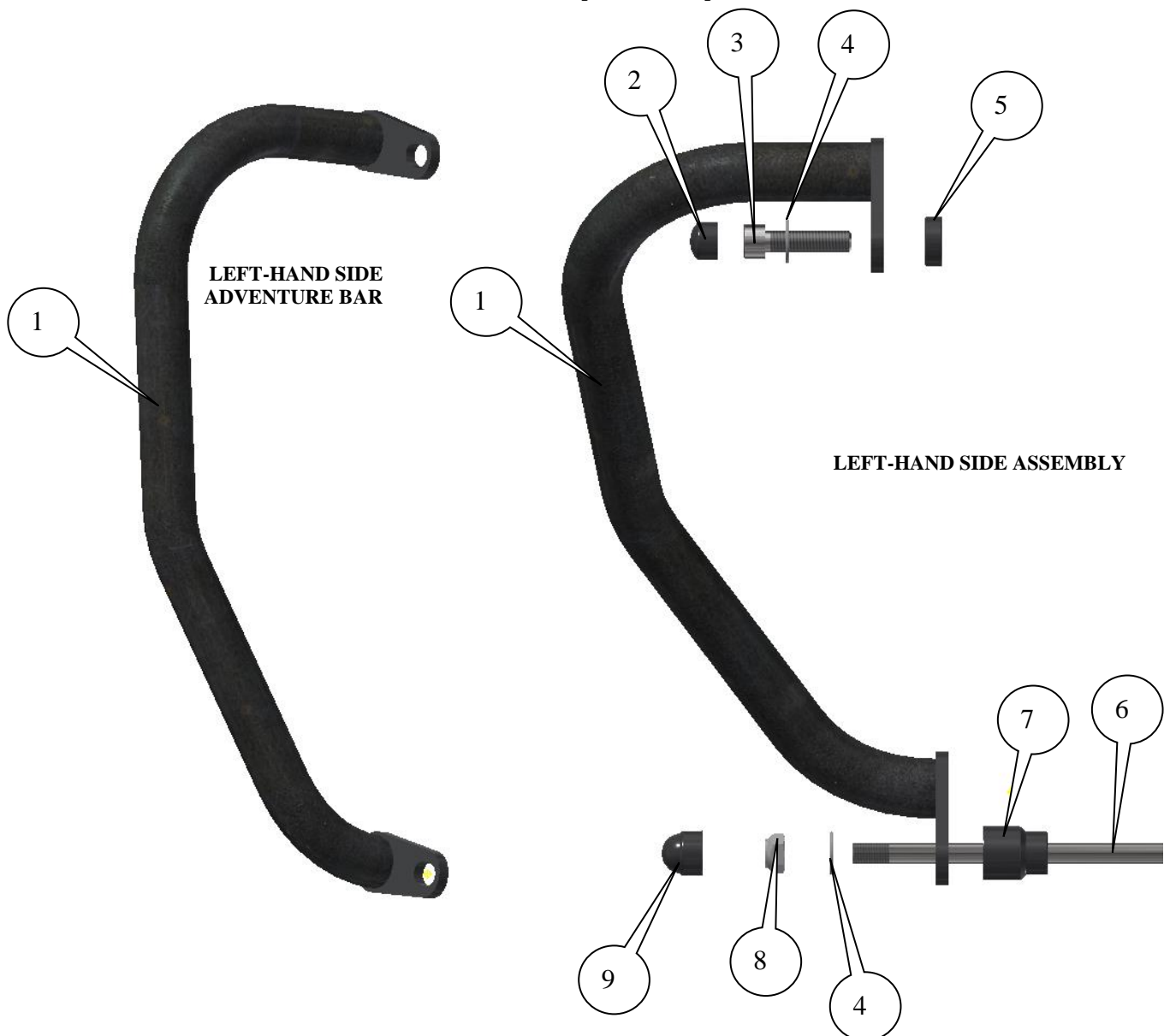
- Socket set to include 14 and 17mm sockets and wrench or spanners.
 - Set of Allen keys to include 8mm A/F or socket bits.
 - Torque wrench (up to 40Nm).



AB0040

In This Kit, There Should Be

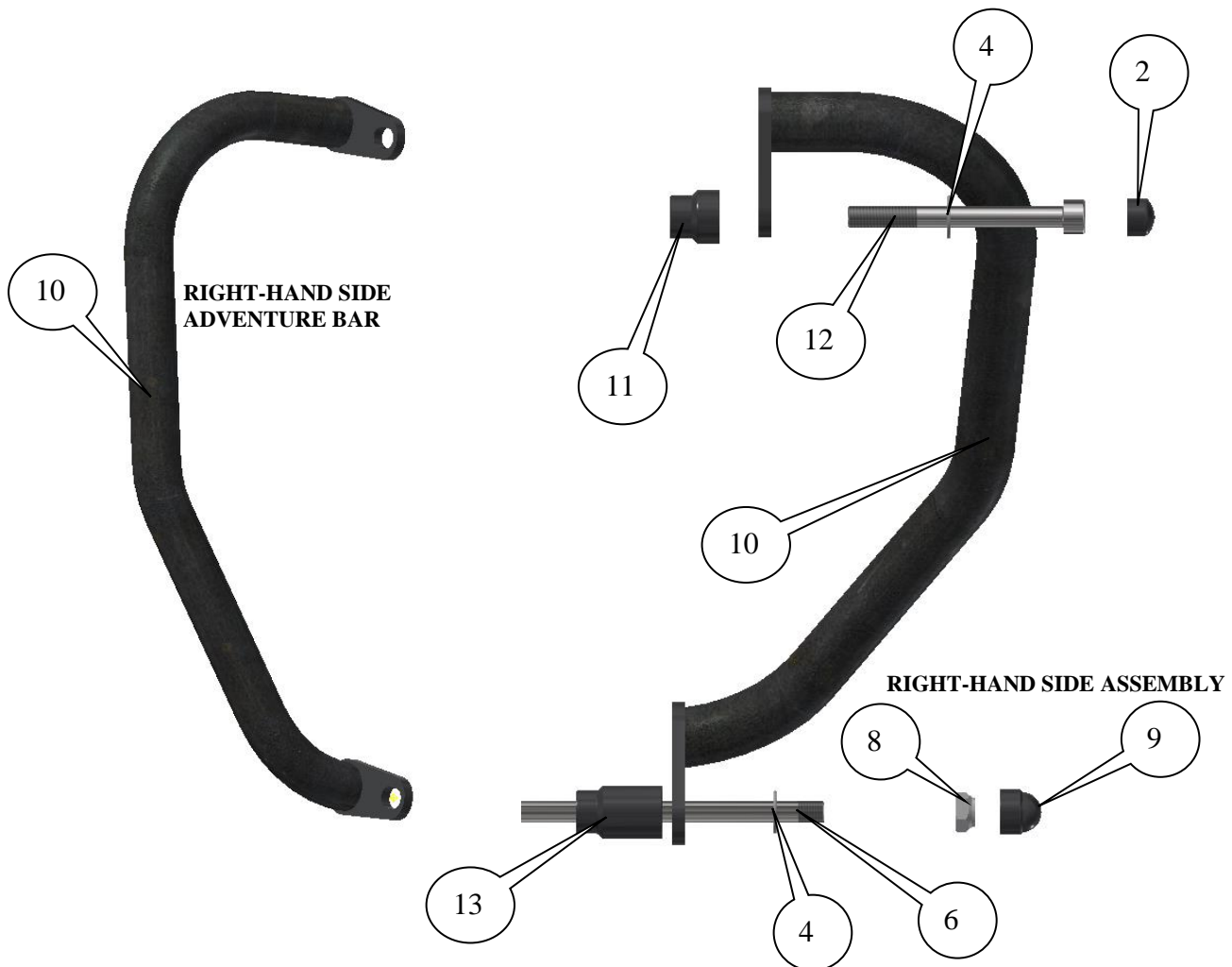
- 1x Left-Hand Side Adventure Bar (AB0040 LHS ASSY).
- 1x Right-Hand Side Adventure Bar (AB0040 RHS ASSY).
 - 1x Engine bar (EB093=M10x210mm long).
 - 1x Upper left-hand side spacer (S0327=8mm long).
 - 1x lower left-hand side spacer (S1140=30mm long).
 - 1x Upper right-hand side spacer (S1141=23mm long).
 - 1x Lower right-hand side spacer (S1142=40mm long).
- 1x M10x1.25x40mm long cap head bolt (upper left-hand side).
- 1x M10x1.25x100mm long cap head bolt (upper right-hand side).
 - 2x M10 Nyloc Nuts.
 - 4x M10 Washers.
 - 2x M10 Nut caps (NC0004).
- 2x M10 Cap head bolt caps (NC0007).



R&G



AB0040



LEGEND

ITEM 1 = ADVENTURE BAR LEFT-HAND SIDE (AB0040 LHS ASSY=WELDED ASSEMBLY) (x1).

ITEM 2 = M10 CAP HEAD BOLT RUBBER CAPS (NC0007) (x2).

ITEM 3 = M10x1.25x40mm LONG CAP HEAD BOLT (UPPER LEFT-HAND SIDE) (x1).

ITEM 4 = M10 WASHERS (x4).

ITEM 5 = LEFT-HAND SIDE UPPER SPACER (S0327=8mm LONG) (x1).

ITEM 6 = M10 ENGINE BAR (EB093=210mm LONG) (x1).

ITEM 7 = LEFT-HAND SIDE LOWER SPACER (S1140=30mm LONG) (x1).

ITEM 8 = M10 NYLOC NUTS (x2).

ITEM 9 = M10 NUT CAPS (NC0004) (x2).

ITEM 10 = ADVENTURE BAR RIGHT-HAND SIDE (AB0040 RHS ASSY =WELDED ASSEMBLY) (x1).

ITEM 11 = RIGHT-HAND SIDE UPPER SPACER (S1141=23mm LONG) (x1).

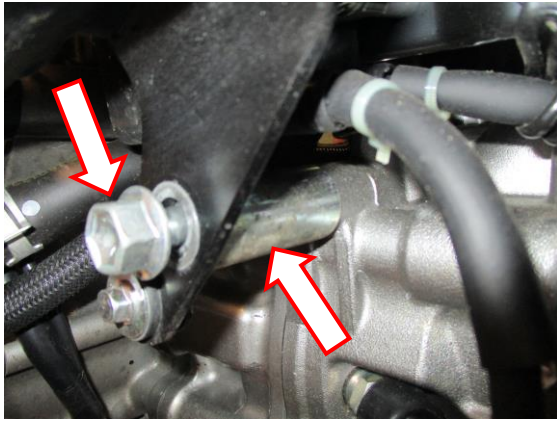
ITEM 12 = M10x1.25x100mm LONG CAP HEAD BOLT (UPPER RIGHT-HAND SIDE) (x1).

ITEM 13 = RIGHT-HAND SIDE LOWER SPACER (S1142=40mm LONG) (x1).

R&G

Unit 1, Shelley's Lane, East Worldham, Alton, Hampshire, GU34 3AQ

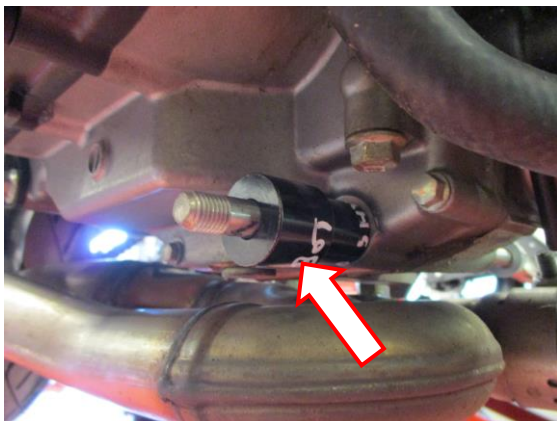
Tel: +44 (0)1420 89007 Fax: +44 (0)1420 87301 www.rg-racing.com Email: info@rg-racing.com



PICTURE 1



PICTURE 2



PICTURE 3



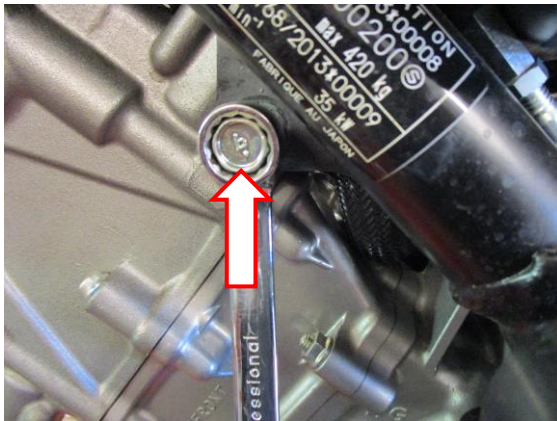
PICTURE 4



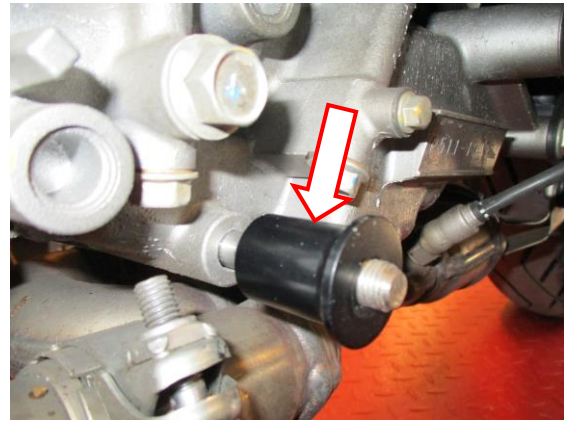
PICTURE 5



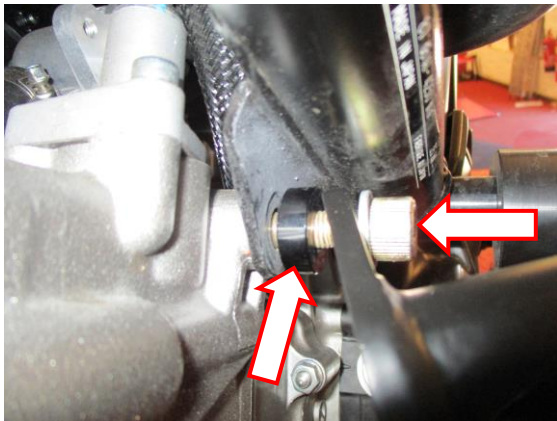
PICTURE 6



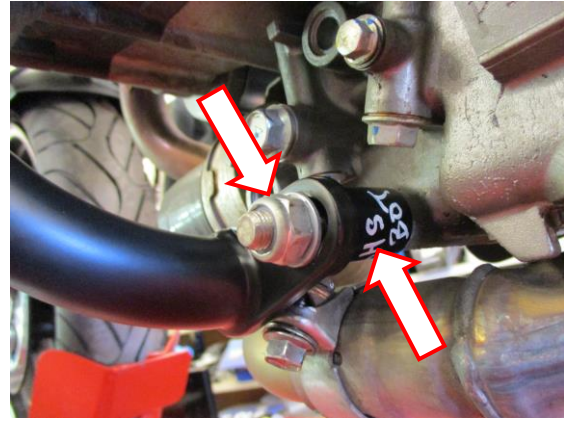
PICTURE 7



PICTURE 8



PICTURE 9



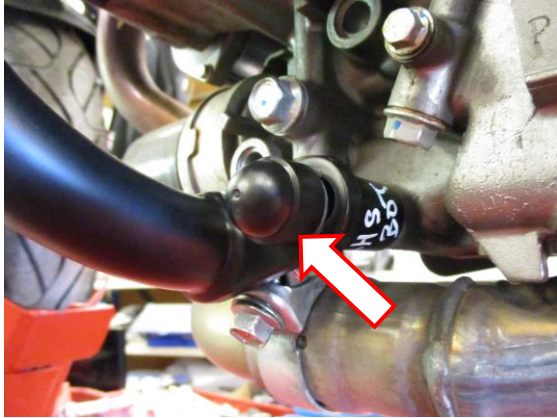
PICTURE 10



PICTURE 11



PICTURE 12



PICTURE 13



PICTURE 14

FITTING INSTRUCTIONS

Off side (right side as you sit on bike)

- Remove the engine bolt arrowed in picture 1, please be aware that the original spacer will become loose and must be used on re-assembly.
- Place the new engine bar (item 6) into the hole arrowed in picture 2, please leave equal amounts protruding from either side.
- Place the right-hand lower spacer (item 13=40mm long) onto the exposed engine bar on the right-hand side as shown in picture 3.
- Place one of the M10 washers onto the longer M10 cap head bolt (item 12=100mm long), then place the bolt and washer through the upper mounting bracket of the right-hand side adventure bar (item 10).
- Place the right-hand side upper spacer (item 11=23mm long) onto the exposed thread of the bolt as shown in the right-hand side assembly.
- Offer the assembly into position as shown in the picture 4 and secure the upper bolt ensuring the original spacer is in position and the lower mounting bracket fits over the exposed engine bar as shown in picture 5.
- Place one of the M10 washers (item 4) and one of the Nyloc nuts onto the exposed thread as shown in picture 6, please ensure the nut is fully engaged but do not tighten at this stage.

Near side (left side as you sit on bike)

- Remove the engine bolt arrowed in picture 7.
- Place the left-hand lower spacer (item 7=30mm long) onto the exposed engine bar on the left-hand side as shown in picture 8.
- Place one of the M10 washers onto the shorter remaining M10 cap head bolt (item 3=40mm long), then place the bolt and washer through the upper mounting bracket of the left-hand side adventure bar (item 1) as shown in picture 9.
- Place the left-hand side upper spacer (item 5=8mm long) onto the exposed thread of the bolt as shown in the left-hand side assembly and picture 9.
- Offer the assembly into position as shown in the top picture and secure the upper bolt ensuring the lower mounting bracket fits over the exposed engine bar as shown in picture 10.
- Place one of the M10 washers (item 4) and one of the Nyloc nuts onto the exposed thread as shown in picture 10, please ensure the nut is fully engaged and tighten.
- Tighten all nuts and bolts and fit the caps as shown in pictures 11, 12, 13 and 14.



ISSUE 1 14/11/2018 (NSY)

CONSUMER NOTICE

The catalogue description and any exhibition of samples are only broad indications of the Products and R&G may make design changes which do not diminish their performance or visual appeal and supplying them in such state shall conform to the order. The Buyer acknowledges no representation or warranty (other than as to title) has been given or will apply to the Products other than those in R&G's order or confirmation and the Buyer confirms it has chosen the Products as being of merchantable quality and suitable for its particular purposes. Where R&G fits the Products or undertakes other services it shall exercise reasonable skill and care and rectify any fault free of charge unless the workmanship has been disturbed. The Buyer is responsible for ensuring that the warranty on the motorcycle is not affected by the fitting of the Products. On return of any defective Products R&G shall at its option either supply a replacement or refund the purchase money but shall not be liable if the Products have been modified or used or maintained otherwise than in accordance with R&G's or manufacturer's instructions and good engineering practice or if the defect arises from accident or neglect. Other than identified above and subject to R&G not limiting its liability for causing death and personal injury, it shall not be liable for indirect or consequential loss and otherwise its liability shall be limited to the amounts paid by the Buyer for the Products or the fitting or service concerned. These terms do not affect the Buyer's statutory rights.

R&G RACING RETURNS POLICY (NON-FAULTY GOODS)

Returns must be pre-authorized (if not pre-authorized the return will be rejected). Goods may only be returned direct to us if they were purchased direct from us (customer must prove if necessary). Otherwise to be returned to original vendor. Goods must be in re-sellable condition, in the opinion of R&G Racing. All returns are subject to a 25% restocking and handling fee (25% of the gross value exc. P&P – at the prevailing price at time of purchase). The customer must pay any and all carriage charges. No returns of discontinued products, unless within 14 days of purchase. This policy does not affect your statutory rights and does not refer to faulty goods.

R&G

Unit 1, Shelley's Lane, East Worldham, Alton, Hampshire, GU34 3AQ
Tel: +44 (0)1420 89007 Fax: +44 (0)1420 87301 www.rg-racing.com Email: info@rg-racing.com



**NOTICE DE MONTAGE POUR AB0040BK BARRES AVENTURE
SUZUKI SV650 X 2018-**



Le kit contient les articles exposés ci-dessous, vérifier que toutes les pièces soient présentes avant de procéder au montage.

La façon dont le kit est emballé ne correspond pas forcément à la façon de monter les pièces sur la moto.

Notez que si les kits sont emballés avec des rondelles en caoutchouc servant à tenir les composants, *ces rondelles doivent être jetées !*

LES PARTIES PRÉSENTÉES PEUVENT ÊTRE UNIQUEMENT REPRÉSENTATIVES (POUR LA CLARTÉ DES INSTRUCTIONS UNIQUEMENT)

Notice disponible au téléchargement sur www.rg-racing.com

VALEURS DE SERRAGE RECOMMANDÉES

M4 BOULON = 8Nm
M5 BOULON = 12Nm
M6 BOULON = 15Nm
M8 BOULON = 20Nm
M10 BOULON = 40Nm

OUTILS REQUIS

- Clés à cliquet 14 et 17mm.
 - Clés Allen 8mm.
- Clé dynamométrique (jusqu'à 40Nm).

R&G

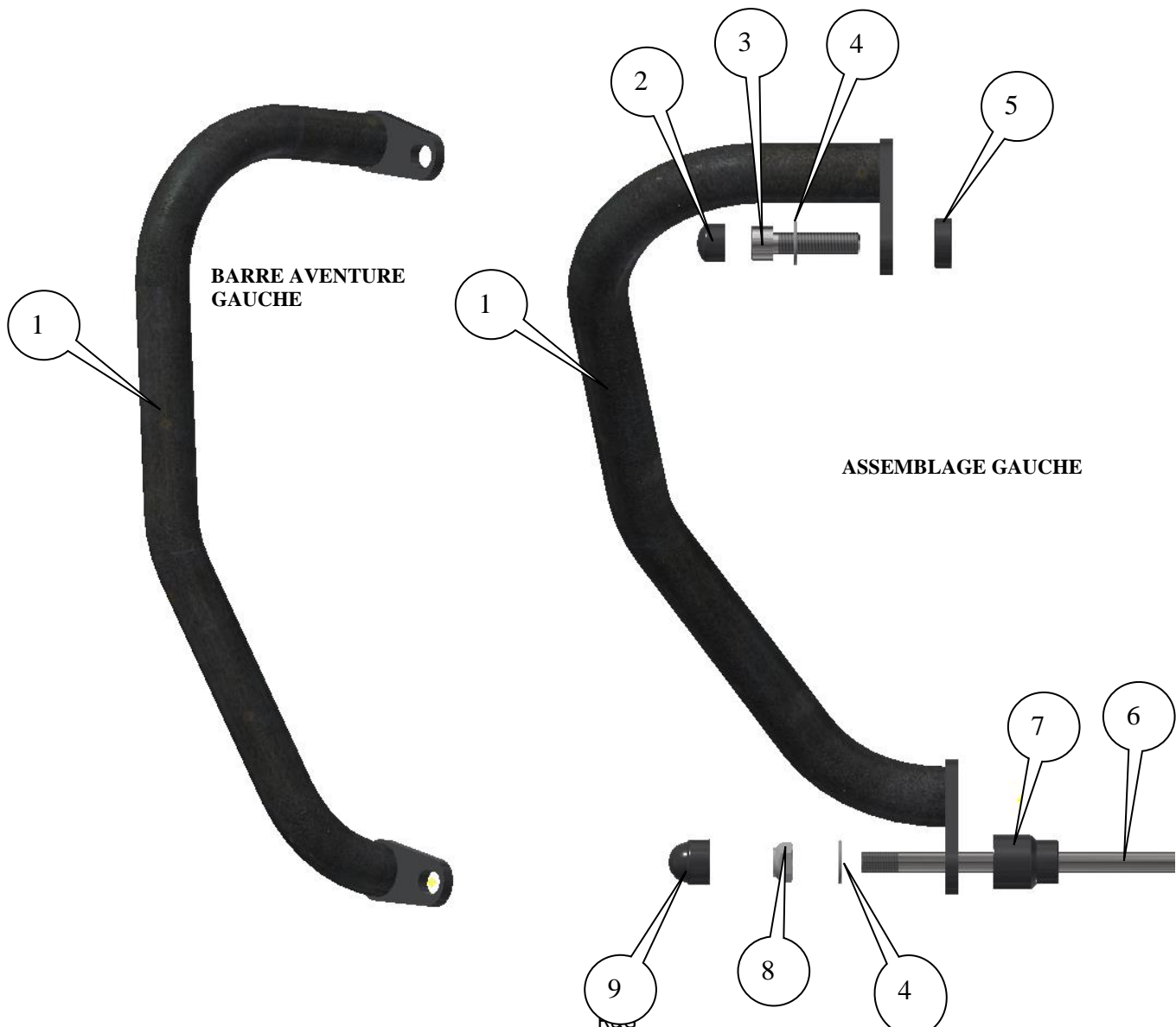
Unit 1, Shelley's Lane, East Worldham, Alton, Hampshire, GU34 3AQ
Tel: +44 (0)1420 89007 Fax: +44 (0)1420 87301 www.rg-racing.com Email: info@rg-racing.com

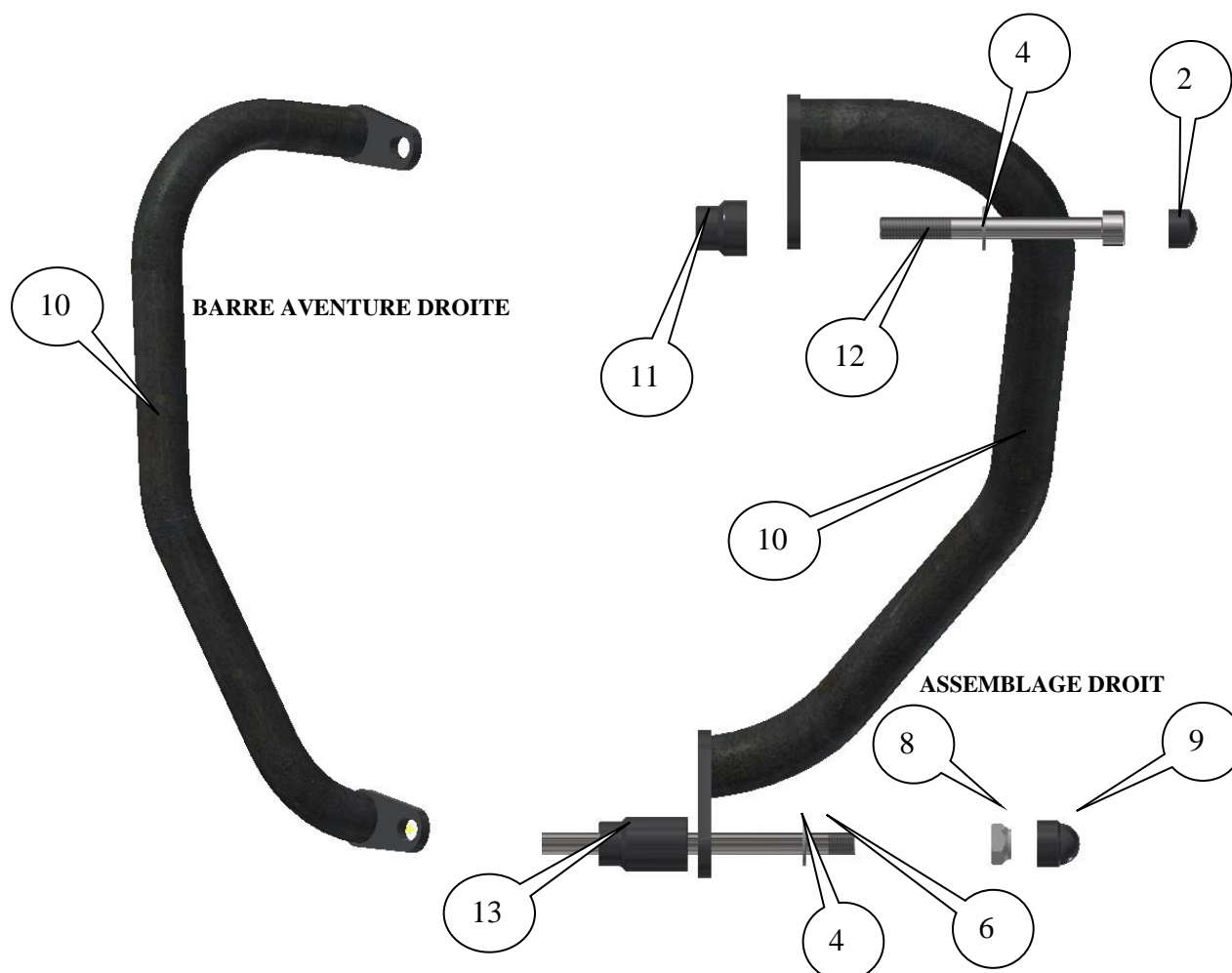


AB0040

LE KIT DOIT CONTENIR:

- 1x Barre Aventure côté gauche (AB0040 ASSEMBLAGE GAUCHE).
- 1x Barre Aventure côté droit (AB0040 ASSEMBLAGE DROIT).
 - 1x Axe moteur (EB093=M10x210mm de long).
 - 1x Entretoise supérieure gauche (S0327=8mm de long).
 - 1x Entretoise inférieure gauche (S1140=30mm de long).
 - 1x Entretoise supérieure droite (S1141=23mm de long).
 - 1x Entretoise inférieure droite (S1142=40mm de long).
 - 1x M10x1.25x40mm Boulon (Côté supérieur gauche).
 - 1x M10x1.25x100mm Boulon (Côté supérieur droit).
 - 2x M10 Écrous.
 - 4x M10 Rondelles.
 - 2x M10 Écrous (NC0004).
 - 2x M10 Boulon (NC0007).





LÉGENDE

ARTICLE 1 = BARRE AVENTURE GAUCHE (AB0040 ASSEMBLAGE GAUCHE=ASSEMBLAGE SOUDÉ) (x1).

ARTICLE 2 = M10 BOUCHON DE BOULON EN CAOUTCHOUC (NC0007) (x2).

ARTICLE 3 = M10x1.25x40mm BOULON (CÔTÉ SUPÉRIEUR GAUCHE) (x1).

ARTICLE 4 = M10 RONDELLES (x4).

ARTICLE 5 = ENTRETOISE SUPÉRIEURE GAUCHE (S0327=8mm DE LONG) (x1).

ARTICLE 6 = M10 AXE MOTEUR (EB093=210mm DE LONG) (x1).

ARTICLE 7 = ENTRETOISE INFÉRIEURE GAUCHE (S1140=30mm DE LONG) (x1).

ARTICLE 8 = M10 ÉCROUS (x2).

ARTICLE 9 = M10 BOUCHON D'ÉCROU (NC0004) (x2).

ARTICLE 10 = BARRE AVENTURE DROITE (AB0040 ASSEMBLAGE DROIT=ASSEMBLAGE SOUDÉ) (x1).

ARTICLE 11 = ENTRETOISE SUPÉRIEURE DROITE (S1141=23mm DE LONG) (x1).

ARTICLE 12 = M10x1.25x100mm BOULON (CÔTÉ SUPÉRIEUR DROIT) (x1).

ARTICLE 13 = ENTRETOISE INFÉRIEURE DROITE (S1142=40mm DE LONG) (x1).

R&G

Unit 1, Shelley's Lane, East Worldham, Alton, Hampshire, GU34 3AQ

Tel: +44 (0)1420 89007 Fax: +44 (0)1420 87301 www.rg-racing.com Email: info@rg-racing.com



NOTICE DE MONTAGE

Côté droit (lorsqu'on est assis sur la moto)

- Enlever le boulon moteur, voir photo 1, en faisant attention à l'entretoise d'origine qui devra être réutilisée dans le remontage.
- Placer le nouvel axe moteur (article 6) dans le trou, voir photo 2, en laissant des longueurs équivalentes dépasser de chaque côté.
- Placer l'entretoise inférieure droite (article 13=40mm de long) sur l'extrémité de l'axe moteur du côté droit, voir photo 3.
- Placer une rondelle M10 sur le boulon M10 (article 12=100mm de long), puis placer le boulon et rondelle dans le support de fixation supérieure de la barre Aventure côté droit (article 10).
- Placer l'entretoise supérieure droite (article 11=23mm de long) sur l'extrémité du filetage du boulon, voir l'assemblage du côté droit.
- Monter l'ensemble en position, voir la photo 4 puis fixer le boulon supérieur en veillant à ce que l'entretoise d'origine soit en position et que le support de fixation inférieur se place sur l'axe moteur exposé, voir photo 5.
- Placer une des rondelles M10 (article 4) et un des écrous sur l'extrémité du filetage, voir photo 6, veiller à ce que l'écrou soit complètement engagé mais ne pas serrer pour le moment.

Côté gauche (lorsqu'on est assis sur la moto)

- Enlever le boulon moteur, voir photo 7.
- Placer l'entretoise inférieure gauche (article 7=30mm de long) sur l'extrémité de l'axe moteur du côté gauche, voir photo 8.
- Place une des rondelles M10 sur le boulon court restant M10 (article 3=40mm de long), puis placer le boulon et la rondelle dans le support de fixation supérieur du côté gauche de la Barre Aventure (article 1) voir photo 9.
- Placer l'entretoise supérieure gauche (article 5=8mm de long) sur l'extrémité du filetage du boulon, voir l'assemblage du côté gauche, voir photo 9.
- Monter l'ensemble en position, voir la photo du haut, puis fixer le boulon supérieur en veillant à ce que le support de fixation inférieur se place sur l'axe moteur exposé, voir photo 10.
- Place une des rondelles M10 (article 4) et un des écrous sur l'extrémité du filetage, voir photo 10, veiller à ce que l'écrou soit complètement engagé puis serrer.
- Serrer tous les écrous et boulons, puis mettez leurs des bouchons, voir photos 11, 12, 13 and 14.



ISSUE 1 14/11/2018 (NSY)

CONSUMER NOTICE

The catalogue description and any exhibition of samples are only broad indications of the Products and R&G may make design changes which do not diminish their performance or visual appeal and supplying them in such state shall conform to the order. The Buyer acknowledges no representation or warranty (other than as to title) has been given or will apply to the Products other than those in R&G's order or confirmation and the Buyer confirms it has chosen the Products as being of merchantable quality and suitable for its particular purposes. Where R&G fits the Products or undertakes other services it shall exercise reasonable skill and care and rectify any fault free of charge unless the workmanship has been disturbed. The Buyer is responsible for ensuring that the warranty on the motorcycle is not affected by the fitting of the Products. On return of any defective Products R&G shall at its option either supply a replacement or refund the purchase money but shall not be liable if the Products have been modified or used or maintained otherwise than in accordance with R&G's or manufacturer's instructions and good engineering practice or if the defect arises from accident or neglect. Other than identified above and subject to R&G not limiting its liability for causing death and personal injury, it shall not be liable for indirect or consequential loss and otherwise its liability shall be limited to the amounts paid by the Buyer for the Products or the fitting or service concerned. These terms do not affect the Buyer's statutory rights.

R&G RACING RETURNS POLICY (NON-FAULTY GOODS)

Returns must be pre-authorized (if not pre-authorized the return will be rejected). Goods may only be returned direct to us if they were purchased direct from us (customer must prove if necessary). Otherwise to be returned to original vendor. Goods must be in re-sellable condition, in the opinion of R&G Racing. All returns are subject to a 25% restocking and handling fee (25% of the gross value exc. P&P – at the prevailing price at time of purchase). The customer must pay any and all carriage charges. No returns of discontinued products, unless within 14 days of purchase. This policy does not affect your statutory rights and does not refer to faulty goods.

R&G

Unit 1, Shelley's Lane, East Worldham, Alton, Hampshire, GU34 3AQ
Tel: +44 (0)1420 89007 Fax: +44 (0)1420 87301 www.rg-racing.com Email: info@rg-racing.com



**MONTAGEANLEITUNG FÜR AB0040BK ADVENTURE STURZBÜGEL
SUZUKI SV650 X 2018-**



ALLE TEILE SIND UNTEN ABGEBILDET UND GEKENNZEICHNET. BEVOR SIE MIT DER MONTAGE BEGINNEN, ÜBERPRÜFEN SIE, DASS ALLE TEILE VORHANDEN SIND.

Hinweis: Die Verpackung der Teile stellt nicht die Reihenfolge der Montage dar.

Hinweis für Kits mit Plastikunterlegscheiben an den Schrauben – *Diese Plastikunterlegscheiben werden nicht für den Einbau benötigt!*

DIE UNTEN ABGEBILDETEN TEILE DIENEN LEDIGLICH ZUR ERKLÄRUNG

Eine digitale Version dieser Montageanleitung kann auf folgender Seite heruntergeladen werden:
www.rg-racing.com

ALLGEMEINE ANZUGSDREHMOMENTE:

M4 SCHRAUBE = 8Nm
M5 SCHRAUBE = 12Nm
M6 SCHRAUBE = 15Nm
M8 SCHRAUBE = 20Nm
M10 SCHRAUBE = 40Nm

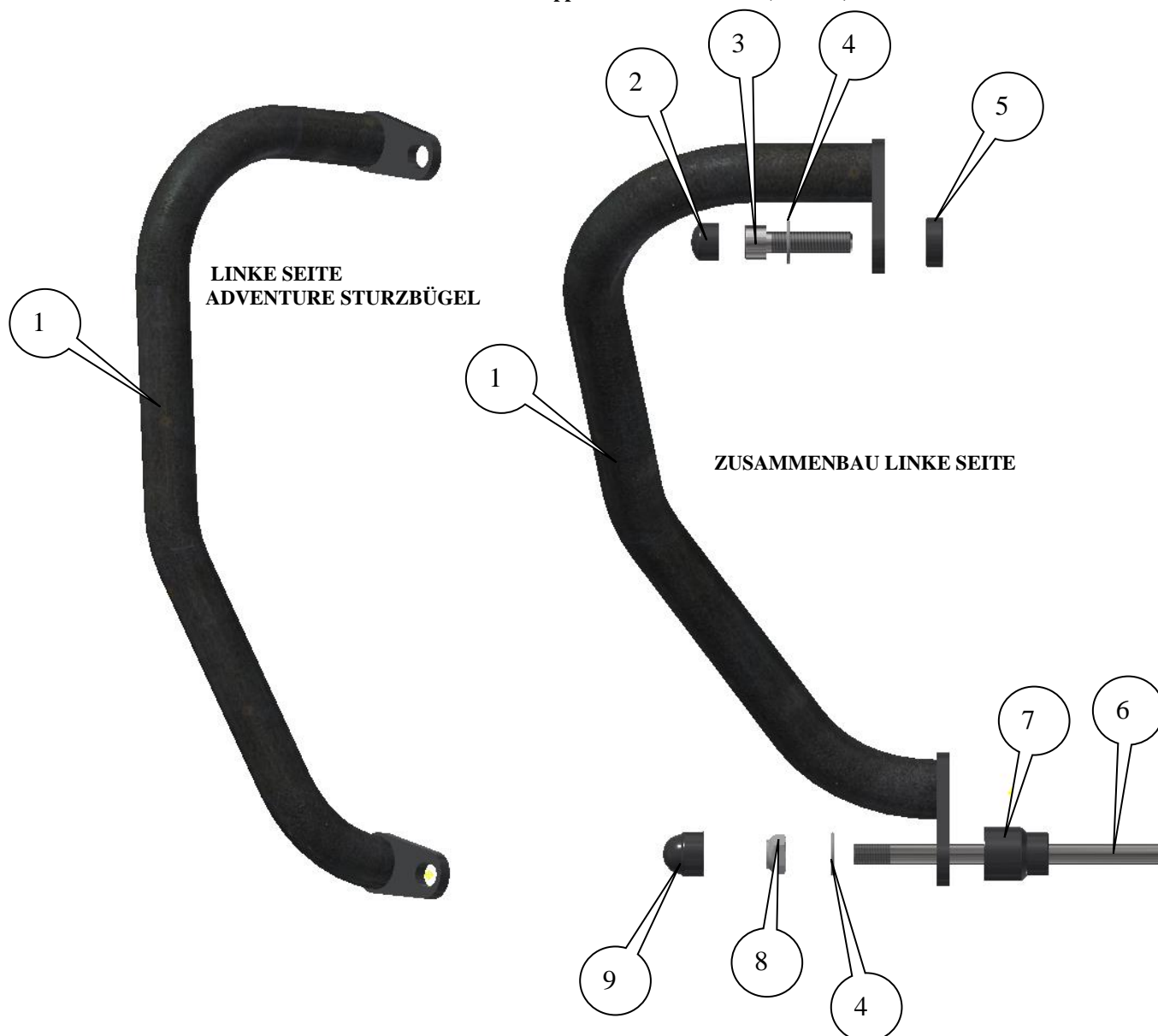
SIE BENÖTIGEN FOLGENDES WERKZEUG

- Steckschlüsselsatz mit 14mm und 17mm Steckschlüssel
 - Satz Inbusschlüssel mit 8 mm Inbusschlüssel
 - Drehmomentschlüssel (bis 40Nm)

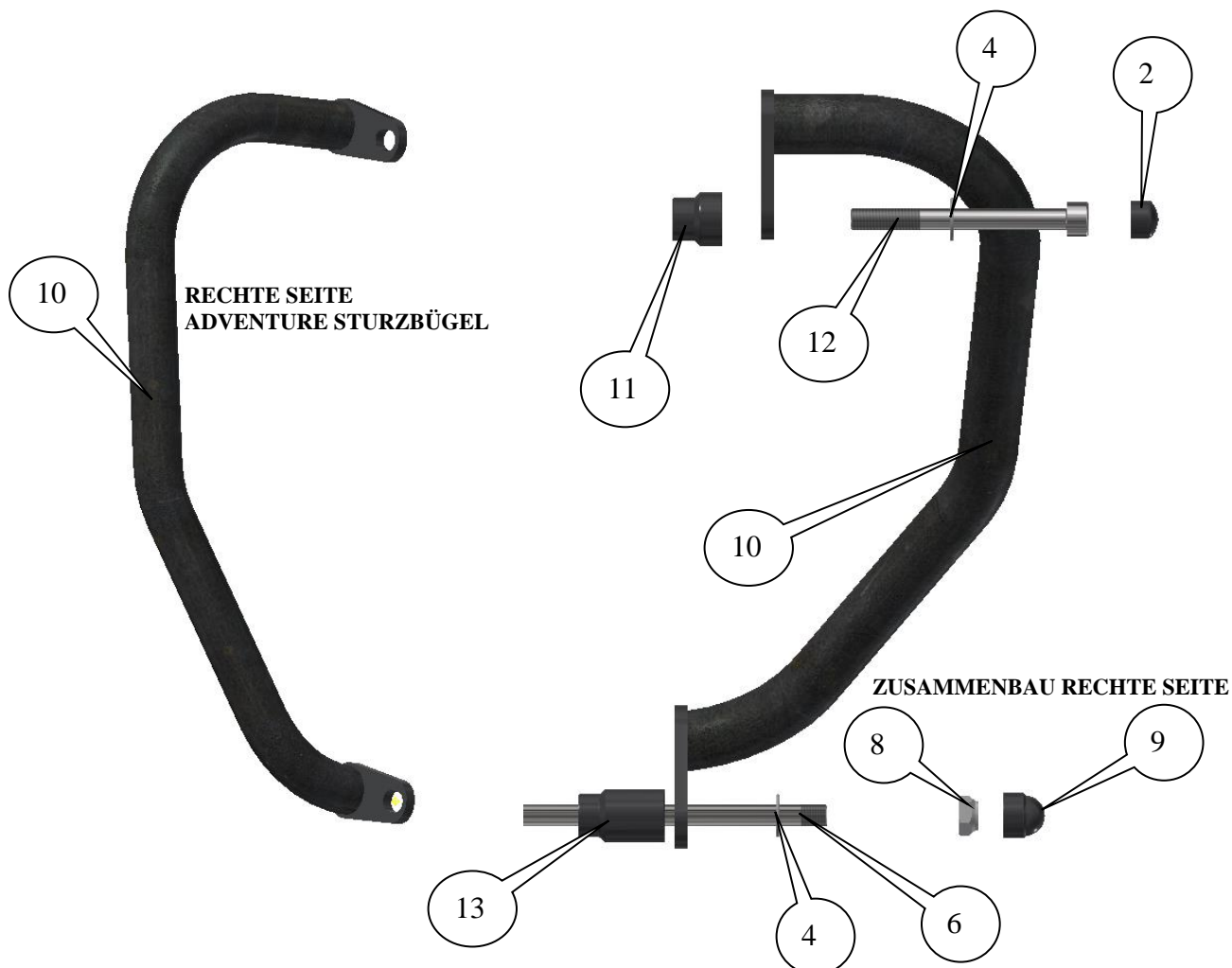


Inhalt des Kits

- 1x Adventure Sturzbügel linke Seite (AB0040 LHS ASSY)
- 1x Adventure Sturzbügel rechte Seite (AB0040 RHS ASSY)
 - 1x Verbindungsstange (EB093=M10x210mm Länge)
 - 1x Distanzhalter linke Seite oben (S0327=8mm Länge)
 - 1x Distanzhalter linke Seite unten (S1140=30mm Länge)
 - 1x Distanzhalter rechte Seite oben (S1141=23mm Länge)
 - 1x Distanzhalter rechte Seite unten (S1142=40mm Länge)
 - 1x M10x1,25x40mm Inbusschraube (linke Seite oben)
 - 1x M10x1,25x100mm Inbusschraube (rechte Seite oben)
 - 2x M10 selbstsichernde Mutter
 - 4x M10 Unterlegscheibe
 - 2x M10 Kappen für die Muttern (NC0004)
 - 2x M10 Kappen für die Schrauben (NC0007)



R&G



LIEFERUMFANG

- ARTIKEL 1 = ADVENTURE STURZBÜGEL LINKE SEITE (AB0040 LHS ASSY) (x1)
 ARTIKEL 2 = M10 GUMMIKAPPEN FÜR SCHRAUBEN (NC0007) (x2)
 ARTIKEL 3 = M10x1,25x40mm INBUSSCHRAUBE (LINKE SEITE OBEN) (x1)
 ARTIKEL 4 = M10 UNTERLEGSCHIEBEN (x4)
 ARTIKEL 5 = OBERER DISTANZHALTER LINKE SEITE (S0327=8mm LÄNGE) (x1)
 ARTIKEL 6 = M10 VERBINDUNGSSTANGE (EB093=210mm LÄNGE) (x1)
 ARTIKEL 7 = UNTERER DISTANZHALTER LINKE SEITE (S1140=30mm LÄNGE) (x1)
 ARTIKEL 8 = M10 SELBSTSICHERNDE MUTTERN (x2)
 ARTIKEL 9 = M10 KAPPEN FÜR MUTTERN (NC0004) (x2)
 ARTIKEL 10 = ADVENTURE STURZBÜGEL RECHTE SEITE (AB0040 RHS ASSY) (x1)
 ARTIKEL 11 = OBERER DISTANZHALTER RECHTE SEITE (S1141=23mm LÄNGE) (x1)
 ARTIKEL 12 = M10x1,25x100mm INBUSSCHRAUBE (RECHTE SEITE OBEN) (x1)
 ARTIKEL 13 = UNTERER DISTANZHALTER RECHTE SEITE (S1142=40mm LÄNGE) (x1)

R&G

Unit 1, Shelley's Lane, East Worldham, Alton, Hampshire, GU34 3AQ

Tel: +44 (0)1420 89007 Fax: +44 (0)1420 87301 www.rg-racing.com Email: info@rg-racing.com



MONTAGEANLEITUNG

Rechte Seite (in Fahrtrichtung)

- Entfernen Sie die Motorschraube, die in Abbildung 1 gekennzeichnet ist. Hinweis: der original Distanzhalter wird dabei locker und muss beim Wiederzusammenbau verwendet werden.
- Die neue Verbindungsstange (Artikel 6) in die Öffnung, die in Abbildung 2 markiert ist, einführen, so dass sie an beiden Seiten gleichmäßig hervorsteht.
- Den unteren Distanzhalter für die rechte Seite (Artikel 13=40mm Länge) an der hervorstehenden Verbindungsstange an der rechten Seite anbringen wie in Abbildung 3 abgebildet.
- Eine M10 Unterlegscheibe an der längeren M10 Inbusschraube (Artikel 12=100mm Länge) anbringen, und die Schraube mit der Mutter durch die obere Montagehalterung für den rechten Adventure Sturzbügel (Artikel 10) führen.
- Den oberen Distanzhalter für die rechte Seite (Artikel 11=23mm Länge) am hervorstehenden Gewinde der Schraube anbringen wie im Zusammenbau für die rechte Seite abgebildet.
- Den Zusammenbau in Position bringe wie in Abbildung 4 abgebildet und die obere Schraube befestigen – bitte hierbei darauf achten, dass der original Distanzhalter in Position ist und die untere Montagehalterung auf die hervorstehende Verbindungsstange passt (siehe Abbildung 5).
- Eine M10 Unterlegscheibe (Artikel 4) und eine selbstsichernde Mutter am hervorstehenden Gewinde montieren wie in Abbildung 6 abgebildet. Bitte stellen Sie sicher, dass die Mutter komplett eingerastet ist, aber zu diesem Zeitpunkt noch nicht festziehen.

Linke Seite (in Fahrtrichtung)

- Entfernen Sie die Motorschraube, die in Abbildung 7 markiert ist.
- Den unteren Distanzhalter für die linke Seite (Artikel 7=30mm Länge) an der hervorstehenden Verbindungsstange an der linken Seite anbringen wie in Abbildung 8 abgebildet.
- Eine M10 Unterlegscheibe an der kürzeren M10 Inbusschraube (Artikel 3=40mm Länge) anbringen, und die Schraube mit der Mutter durch die obere Montagehalterung des Adventure Sturzbügels für die linke Seite ((Artikel 1) führen – siehe Abbildung 9.
- Den oberen Distanzhalter für die linke Seite (Artikel 5=8mm Länge) am hervorstehenden Gewinde der Schraube anbringen wie im Zusammenbau für die linke Seite und in Abbildung 9 abgebildet.
- Den Zusammenbau in Position bringen wie in der oberen Abbildung abgebildet und die obere Schraube befestigen – bitte hierbei darauf achten, dass der original Distanzhalter in Position ist und die untere Montagehalterung auf die hervorstehende Verbindungsstange passt (siehe Abbildung 10).
- Eine M10 Unterlegscheibe (Artikel 4) und eine selbstsichernde Mutter am hervorstehenden Gewinde montieren (siehe Abbildung 10). Stellen Sie sicher, dass die Mutter komplett eingerastet ist und ziehen Sie sie fest.
- Ziehen Sie alle Muttern und Schrauben fest und montieren Sie die Kappen wie in den Abbildungen 11, 12, 13 und 14 abgebildet.

AUSGAB 1 14/11/2018 (NSY)

CONSUMER NOTICE

The catalogue description and any exhibition of samples are only broad indications of the Products and R&G may make design changes which do not diminish their performance or visual appeal and supplying them in such state shall conform to the order. The Buyer acknowledges no representation or warranty (other than as to title) has been given or will apply to the Products other than those in R&G's order or confirmation and the Buyer confirms it has chosen the Products as being of merchantable quality and suitable for its particular purposes. Where R&G fits the Products or undertakes other services it shall exercise reasonable skill and care and rectify any fault free of charge unless the workmanship has been disturbed. The Buyer is responsible for ensuring that the warranty on the motorcycle is not affected by the fitting of the Products. On return of any defective Products R&G shall at its option either supply a replacement or refund the purchase money but shall not be liable if the Products have been modified or used or maintained otherwise than in accordance with R&G's or manufacturer's instructions and good engineering practice or if the defect arises from accident or neglect. Other than identified above and subject to R&G not limiting its liability for causing death and personal injury, it shall not be liable for indirect or consequential loss and otherwise its liability shall be limited to the amounts paid by the Buyer for the Products or the fitting or service concerned. These terms do not affect the Buyer's statutory rights.

R&G RACING RETURNS POLICY (NON-FAULTY GOODS)

Returns must be pre-authorised (if not pre-authorised the return will be rejected). Goods may only be returned direct to us if they were purchased direct from us (customer must prove if necessary). Otherwise to be returned to original vendor. Goods must be in re-sellable condition, in the opinion of R&G Racing. All returns are subject to a 25% restocking and handling fee (25% of the gross value exc. P&P – at the prevailing price at time of purchase). The customer must pay any and all carriage charges. No returns of discontinued products, unless within 14 days of purchase. This policy does not affect your statutory rights and does not refer to faulty goods.

R&G

Unit 1, Shelley's Lane, East Worldham, Alton, Hampshire, GU34 3AQ

Tel: +44 (0)1420 89007 Fax: +44 (0)1420 87301 www.rg-racing.com Email: info@rg-racing.com